









Lynx Portable Display

Quick Start Guide

Verify that your Lynx Portable Display package contains the components pictured below. If not, or if you need additional help, please call: USA 978.556.9780 or email support@finishlynx.com



Item	Description	Item	Description
	Angled Display Foot Set		15' HDMI Input Cable
	50' HDMI Input Cable		USB Cable
	25' Power Input Cable		7/32" Allen Wrench

Items not included

Computer running FinishLynx or FieldLynx on Microsoft Windows. Either a Vision or Vision PRO camera with Video Display Module (VDM) option or ResultTV is also required.

Introduction

The following guide will walk you through the setup, configuration, and operations of the display. If at any point you need additional help, please contact Technical Support: support@finishlynx.com.

Setup

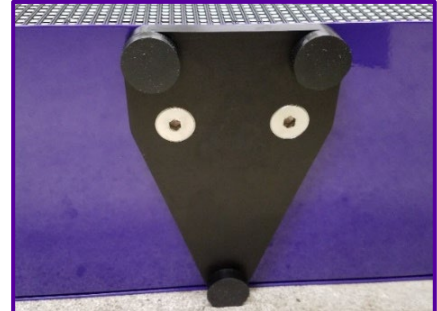
1. Decide how you would like your display to stand. There are two different types of feet for the display that can be changed by using the included wrench and extra screws. This allows you to set the scoreboard up according to your preferences.



Located on the bottom of the display in the center, this can be used to setup your display on a tripod (not included).



Use these feet if you would like your display to lean back against the ground.



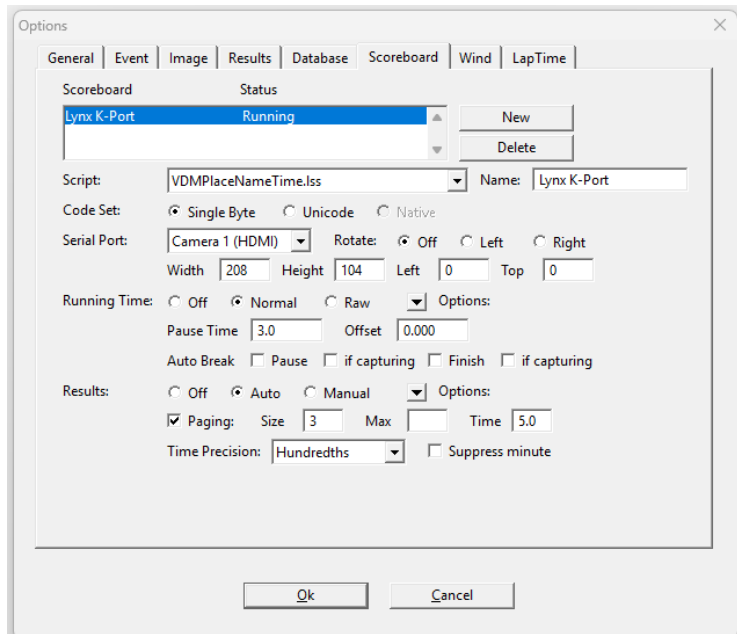
Use these feet if you would like your display to stand up straight, flat on the ground.

2. Connect the power cord and HDMI cable to the display. The other end of the HDMI cable then connects to the back of your Vision camera (with VDM) or ResultTV computer.



Method 1: FinishLynx & VDM

1. Choose the Video Display Module (VDM) script that best suits your needs. There are several different scripts to choose from.
 - a. See the **VDM** section of the [FinishLynx Online Manual](#) to learn how to:
 - Send scoreboard data
 - Send a photo-finish image
 - b. Watch the [FinishLynx Video Display Module Video](#) (can be found on YouTube) to understand the full operation of VDM.
2. Configure your settings for the scoreboard in the FinishLynx program. Click **Scoreboard | Options** and click **New** to open the window to input this data.
3. Set the following:
 - a. Serial Port: <Camera Name>(HDMI)
 - b. See Resolution label on display and enter the correct **Width/Height (208/104)**
 - c. Rotate: **Off**
 - d. Running Time: **Normal**
 - e. Results: **Auto**
 - f. Size: **3**
4. After entering these settings, restart the software to confirm that the scoreboard script is running.





Method 2: FinishLynx or FieldLynx, and ResultTV

ResultTV

1. Go to **File | Options... | General tab**:
 - a. Select the **Video-Portable** profile.
 - b. Click **Ok**.
 - c. Exit and restart ResultTV.

FinishLynx or FieldLynx

1. Go to **Scoreboard | Options...**
2. Click **New**.
3. Serial Port: **Network(listen)**
 - a. Port: **1024**
 - b. IP address: address of the ResultTV PC.

FinishLynx

- Script: **ResultTV_Video_1line.lss**
- Running Time: **Normal**
- Results: **Auto**

FieldLynx

- Results Script
 - Metric: **ResultTV_Video_Results.lss**
 - English: **ResultTV_Video_Results.lss**
 - Standings: **ResultTV_Video_Standings.lss**

Tips: FinishLynx/Operating the Scoreboard

1. There needs to be an active event for the running time to be displayed. Therefore, you will need to open a new event.
2. To begin operating the scoreboard for an event, display running time by giving a start signal to the event.
3. To show your results from the race, stop the running time by pressing **Alt+S**, or **Alt+F**, when used with a photoeye.
 - Photoeyes can be internal to the camera if you are using Automatic Capture Mode (ACM).
 - The running time needs to be stopped to display your results on the screen. Both running time and results cannot be shown at the same time. Therefore, once the running time is stopped, the next evaluation will start the results scrolling.