

Release Notes

FinishLynx 12.00

Obtaining Lynx Products and Information	1
Obtaining Technical Support	1
What's New	2
Profiles	2
VeriLynx Profile	3
General Improvements	4
Scoreboard Scripts	4
Remote Control Commands Update	5
Lynx Data Port (LDP) Plug-in Update	5
ADVANCED - Other Settings	5

Obtaining Lynx Products and Information

There are three ways to obtain Lynx products and information:

- » Go to the Lynx website (<http://www.finishlynx.com/product/>)
- » Call (978) 556-9780 and ask to speak with someone in sales, or
- » Send an email to...

Domestic Sales: domsales@finishlynx.com

International Sales: intlsales@finishlynx.com

Obtaining Technical Support

There are three ways to obtain technical support for Lynx products:

- » Go to the Lynx website (<http://www.finishlynx.com/support/>)
- » Find our latest video tutorials on YouTube (<https://www.youtube.com/c/FinishLynx/videos>)
- » Call (978) 556-9780 and ask to speak with someone in tech support, or
- » Send an email to...

Technical support: support@finishlynx.com



What's New

TIP: For more information, check out our video tutorials on [YouTube](#).

Profiles

FinishLynx supports the concept of profiles. A profile can be used to store configuration and camera settings, as well as an associated language file or splash screen. When a profile is used, all of the settings are saved to the current profile when FinishLynx is closed, and re-loaded the next time FinishLynx is started. This makes it easy to switch from one application to the next (like track to cross-country and back, for example).

» To create a new profile:

1. Go to **File | Create Profile...**
2. Enter a name for this new profile.
3. Hit **Enter**.

NOTE: New profiles start with the standard FinishLynx default settings.

» To load a profile:

1. Go to **File | Options... | General**.
2. Select the profile name from the **Profile:*** list.
3. Click **Ok**.
4. Restart FinishLynx.

NOTE: When a custom profile is loaded, the application title bar will show the <profilename>.

TIP: You can create custom splash screens for each profile by saving a <profilename>.tga (Targa) and renaming the extension .tgs.

» To save a profile:

Simply close FinishLynx. The current Options, Camera Settings, selected Language will be saved to the current profile.

NOTE: Camera Settings are saved for the cameras currently in used. If different cameras are used, they will have the standard default settings initially, but will save the new settings moving forward.

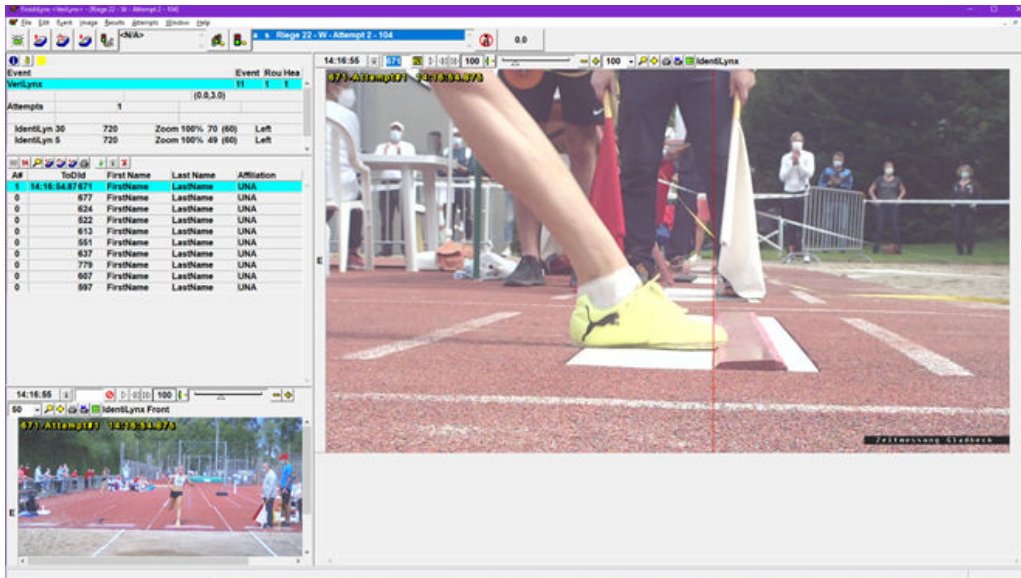
VeriLynx Profile

Field Event Video Verification

FinishLynx includes the VeriLynx profile. This profile is customized to support the use of IdentiLynx cameras for video review of field events, such as the verification of take-off fouls in the long or triple jump events. Align your IdentiLynx camera with the take-off board, load your field event start list, capture, verify & timestamp every attempt. VeriLynx will save all images to disk in real-time (no image loss) and allow you to quickly review every attempt for every athlete, providing proof in case of a foul.

VeriLynx also has the option of exporting a jpeg of each attempt automatically when marking a frame, and keeping multiple IdentiLynx image panes synchronized (time tracking) to view multiple angles.

For more information on how to use IdentiLynx cameras with the VeriLynx profile, go to the VeriLynx page.



NOTE: Under World Athletics Technical Rule 30.1.1, horizontal jump take-off failures are re-defined to include any breaking of the vertical plane of the take-off line. Rule 29.5 strongly encourages judges to use video or other technology to assist the decision process.

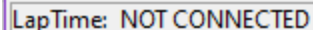


General Improvements

LapTime Connection Status

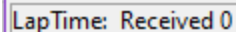
LapTime objects now show the connection status in the **Status** bar.

- » If the connection fails to open at start-up, the message **NOT CONNECTED** will appear.



LapTime: NOT CONNECTED

- » If the connection is successfully opened, the message Received <n> will appear, where <n> is the raw number of readings (not specific to an event) received so far from the current LapTime object. <n> will be 0 when the connection is first established or re-established.



LapTime: Received 0

NOTE: A "open" connection means different things for different connection types. For serial and UDP ports, it means the port exists and the LapTime object was able to "grab" it (nothing is known about the LapTime device actually being connected). For TCP ports, Network (connect/listen), open means the socket is active.

TIP: Advanced - For Windows to regularly monitor the state of the TCP connection at a set interval, create this DWORD registry key: HKLM\SYSTEM\CurrentControlSet\Services\Tcpip\Parameters\KeepAliveTime. Units are milliseconds (decimal). 30000ms will have Windows check every 30 seconds. Requires a PC restart.

Additional LapTime and Scoreboard Options Status

In addition to existing states (not loaded, not running, running), the Status in the object box for the LapTime and Scoreboard Options tabs, will now show Not Connected if the TCP connection is not connected but otherwise loaded and configured.

- » **Not loaded** - new object. FinishLynx needs to be restarted.
- » **Not running** - object is loaded, but the Serial (or Network) parameters are not valid.
- » **Not connected** - object is loaded and configured, but the connection is not established with the remote device.
- » **Running** - object is loaded, configured and connected.

Affiliation Field

The affiliation field now supports up to 63 characters (instead of 31 like all the other results text fields).

Scoreboard Scripts

- » **uTabLED** scripts are updated to include a scrolling message section.
- » **RCP_ImageExport.lss** supports sending Remote Control Commands to export the current image when results are updated.

Remote Control Commands Update

The Remote Control Commands now supports:

- » Opening an event
- » XON(11h)/XOFF(13h) control. When XOFF is received, the interface will not echo commands until XON is received.

NOTE: For a full list of commands, see the [FinishLynx Remote Control Specification](#).

Lynx Data Port (LDP) Plug-in Update

The LDP protocol includes an Event Status message. This message informs the receiver on the status of:

- » Event, starts, image, orientation
- » Camera online or offline
- » External Sync
- » Camera buffer, last frame and total frames count
- » Frame rate

NOTE: Run FinishLynx as Administrator (right-click shortcut + Run As Administrator) for best performance.

ADVANCED - Other Settings

Additional *Other (hidden) settings* are included:

- » **Database\File** supports overriding the default names of the schedule (Lynx.sch), events (Lynx.evt) and people (Lynx.ppl) files.
- » **Database\Serial\KeepAlive** enables TCP Keep Alive option for the Database module (default: OFF).
- » **Event\Image\IdentifyLynx\AddSplits** supports adding split times from the IdentifyLynx images. When ON and if a "from image" laptime object exists, the IdentifyLynx image panes will have the "Add Split" button as well as the ID pane and Identify by button.
- » **Event\Image\IdentifyLynx\AlignIDL** can be used to turn on the alignment lines for IdentifyLynx cameras.
- » **Event\Image\IdentifyLynx\TimeTrack** can be used to enable additional time tracking events from IdentifyLynx images.
- » **Hardware\AIC\Capture** used to expand the Auto-Iris Control (AIC) gain range while capturing (default: 0). When set to >1, the gain range (Min/Max) will expand by the value set during capture.
- » **Hardware\AIC\Wait** allows to set an initial delay when an Auto-Iris Control (AIC) action is needed to confirm the action is still needed (default: 0). Can be used to avoid AIC action for small changes in light.
- » **LapTime\KeepAlive** enables TCP Keep Alive option for the LapTime module (default: ON).
- » **LapTime\Log** enables logging of LapTime status messages.
- » **RemoteControl\KeepAlive** enables TCP Keep Alive option for the Remote Control module (default: OFF).
- » **RemoteControl\LDP\KeepAlive** enables TCP Keep Alive option for the LDP module (default: OFF).



- » **Scoreboards\KeepAlive** enables TCP Keep Alive option for the Scoreboard module (default: ON).
- » **WindGauge\KeepAlive** enables TCP Keep Alive option for the Wind module (default: OFF).

Additional items available for the menu bar shortcuts:

- » **String\MenuBar\Image\FramePlay** for the Identilynx image pane Play button.
- » **String\MenuBar\Image\FramePrev** for the Identilynx image pane Previous frame button.
- » **String\MenuBar\Image\FrameNext** for the Identilynx image pane Next frame button.

NOTE: These advanced settings are for experienced users only. For more information on how to access these settings, please contact our support team.