

Increase Meet Quality & Mobility



The **Gold Package** contains all of the components from the Silver Package, along with several key features that allow operators to build a more advanced results network.

The **Identilynx Full-Frame Video Camera** is an Ethernet-based digital video camera that combines with an EtherLynx line-scan camera to enhance the 1-D photo-finish images with integrated full-frame video.

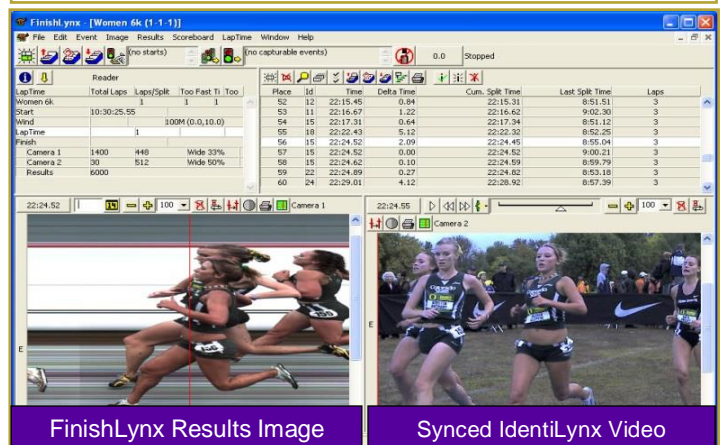
The **9-Digit LED Display** connects to the FinishLynx system and can display running times and results that are clearly visible from over 200 feet away. The ACM plug-in will also send unofficial finish times immediately to the display for all to see.

RadioLynx Wireless Start is a customer-favorite because it replaces the 500' start cable and allows Starters to move more freely about the venue.

Components

- **EtherLynx Vision™ Camera** – 2,000 frames/second, timer-enabled, fully upgradeable
 - C-Mount f1.2, 8-48mm motorized zoom lens
 - **Internal RadioLynx**
- **Identilynx Video Camera** (with lens, tripod, & cables)
- **RadioLynx Wireless Start System**
- **9-Digit LED Display** (with bag & charger)
- **Wired Start System & Capture Button**
- **Tripod and mounting hardware** for precision adjustment
- **All-inclusive power, Ethernet, & start cable set**
- **8-Port 10/100 Power-over-Ethernet Switch**
- **Lynx Tech Support & 1-Year renewable warranty**
- **Remote Lens & Remote Camera Positioner**
- **FinishLynx32** – Photo-Finish Software
 - Auto-Capture & Virtual Photo-Eye Plug-In
- **LynxPad** – Event Management Software

Gold Package: \$16,995



Features and Benefits of the Gold Package

The **Gold Package** includes all the key components from the Silver Package (Auto-Capture, high-resolution images, remote features), plus **Identilynx Full-Frame Video**, a **9-Digit LED Display**, and **RadioLynx Wireless Start**.

If your program hosts Track or Cross Country meets throughout the year, the **Gold Package** is right for you. It offers everything needed to host events at the highest levels of state and national competition. FinishLynx Fully Automatic Timing technology is trusted by 2,600 high schools across the country.



FAT Results with the Lynx Gold Package

The **Gold Package** includes **IdentiLynx**, an Ethernet-based digital video camera that works alongside the line-scan camera to enhance photo-finish images with 2-D video. Because IdentiLynx is time-synchronized with the FinishLynx capture, you can click anywhere on the image to see head-on video from precisely the same moment, allowing for easy athlete identification using bib numbers or uniforms.

The more hardware that gets included, the more powerful and sophisticated the results network becomes. One of the key benefits of FinishLynx technology is that individual components can work together to produce a more complete results network, improving meet quality for administrators and athletes alike.

With the IdentiLynx video camera, RadioLynx Wireless Start, and 9-Digit LED Display, the **Gold Package** provides one of the most powerful timing solutions available today. It is more than just a timing system – it's a real-time FAT results network tailored to your venue.

Why Upgrade to Gold?

Includes everything from the **Silver Package**

PLUS

- IdentiLynx Full-Frame Video Camera
- RadioLynx Wireless Start System
- 9-Digit LED Display

The RadioLynx Wireless Start system wirelessly transmits the start signal so the officials can move freely around the venue without a 500' start cable trailing them.

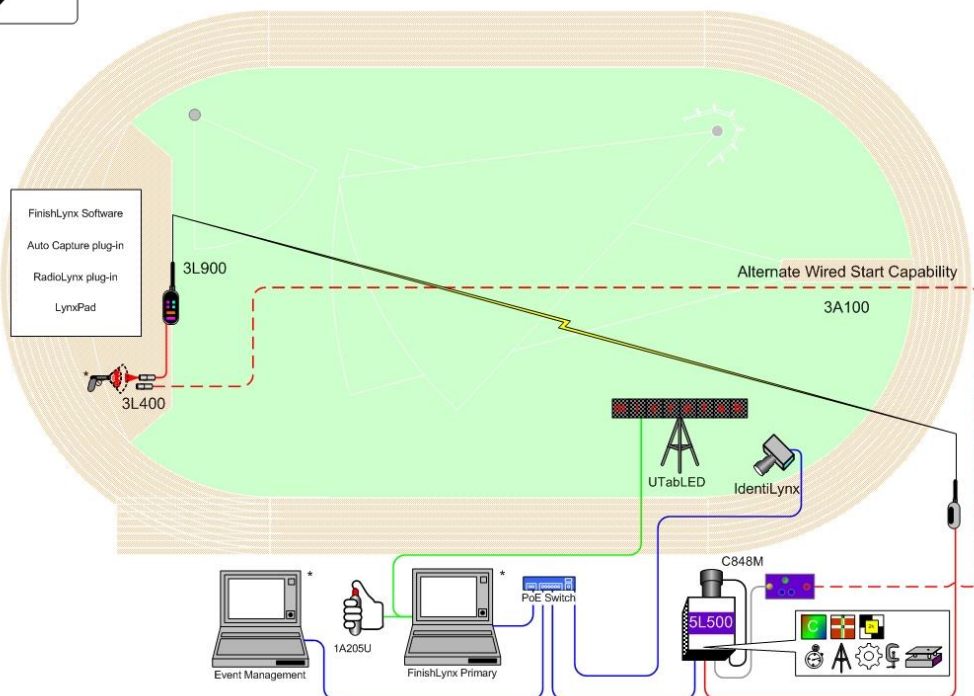
The 9-Digit LED Display shows 6" letters and numerals that are visible from over 200 feet away.

The IdentiLynx Video Camera offers 2-D video that's time-synchronized with your FinishLynx results, so finishes can be viewed from a different angle. IdentiLynx makes it easy to identify athlete singlets and bib numbers during evaluation.

Gold Package System Diagram



Gold - Track



* Computers and starting pistol not included in package

© 1992 - 2017 | Lynx System Developers, Inc. | www.finishlynx.com