







# VeriLynx

## Field Event - Video Verification

### Quick Start Guide (v1.10)

Verify that your VeriLynx Full-Frame video system contains the components pictured below.  
If not, or if you need additional help, please call: USA 978 556 9780 or email [support@finishlynx.com](mailto:support@finishlynx.com).

Item	Description	ID	Item	Description	ID
	VeriLynx Camera	VeriLynx		Power Injector for Power-over-Ethernet	IDL-PoE
	Protective Case	CP102		Power-over-Ethernet Power Supply Connector	Included with IDL-PoE
	10' (3 meter) Ethernet Cable	C10BT-10		100' (33 meter) Ethernet Cable	C10BT-100

#### Items not included

- Computer (laptop recommended) running Microsoft Windows. Your computer needs: one available Ethernet port.
- UPS Battery Backup

#### Introduction

The following guide will walk you through the setup, configuration, and operations of **FinishLynx**, when used with **VeriLynx** cameras to assist judging of take-off fouls for horizontal jumps or other field events.

If at any point you need additional help, please contact Technical Support: [support@finishlynx.com](mailto:support@finishlynx.com).

#### General Information

Under World Athletics Technical Rule 30.1.1, horizontal jump take-off failures are re-defined to include any breaking of the vertical plane of the take-off line. Rule 29.5 strongly encourages judges to use video or other technology to assist the decision process. **VeriLynx** cameras, along with special configuration of the FinishLynx software, can be used for this purpose.

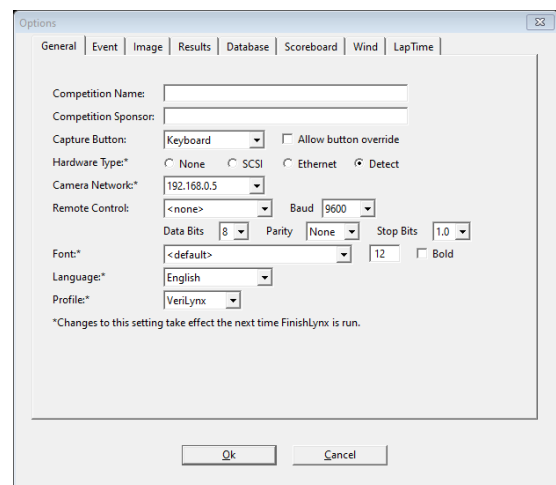


## Setup 1 Hardware Setup

1. Place the camera on the tripod in the plane of the take-off board.
  - a. (optional) position a second **VeriLynx** camera beyond the take-off board and pointed back toward the runway. This camera can be used for visual confirmation of the current athlete.
2. Plug the Power-over-Ethernet (PoE) power supply into the power source or UPS battery backup.
3. Connect the short Ethernet cable (10') from the PC to the **IN** port of the PoE power supply.
4. Connect the long Ethernet cable (100') from the **OUT** port of PoE power supply to the back of the camera.


## Setup 2 Software Configuration (Options)

1. Start **FinishLynx** (version 12.00 or newer).
2. Go to **File | Options...**
3. Select **VeriLynx** from the **Profile:** list.
4. Restart **FinishLynx**.
5. Go to **File | Options... | Database** and set the **Input Directory** to the location of the Lynx database files (fldlynx.sch, lynx.evt, lynx.ppl).
6. Click **Ok**.



**NOTE** – When running **FinishLynx** using the **VeriLynx** profile, the splash screen and the application title bar will display a reference to **VeriLynx**. This helps confirm the right profile is selected.

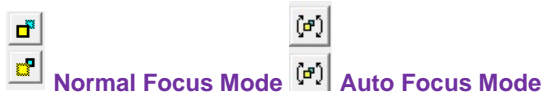
## Setup 3 Software Configuration (Camera Settings)

1. Click the **Camera Settings** icon. 
2. Click the **Parameters** tab:
  - a. **Frame Rate** = Max available.
  - b. **Frame Height** = 1280x720 (or higher).
  - c. **Shutter Speed** = 1/700 (or smaller).
3. Click the **Capture** tab:
  - a. Capture Method = **Automatic (IdentLynx Motion)**.
  - b. Capture Method = **Trailer** = 5.
4. Click **Ok**.

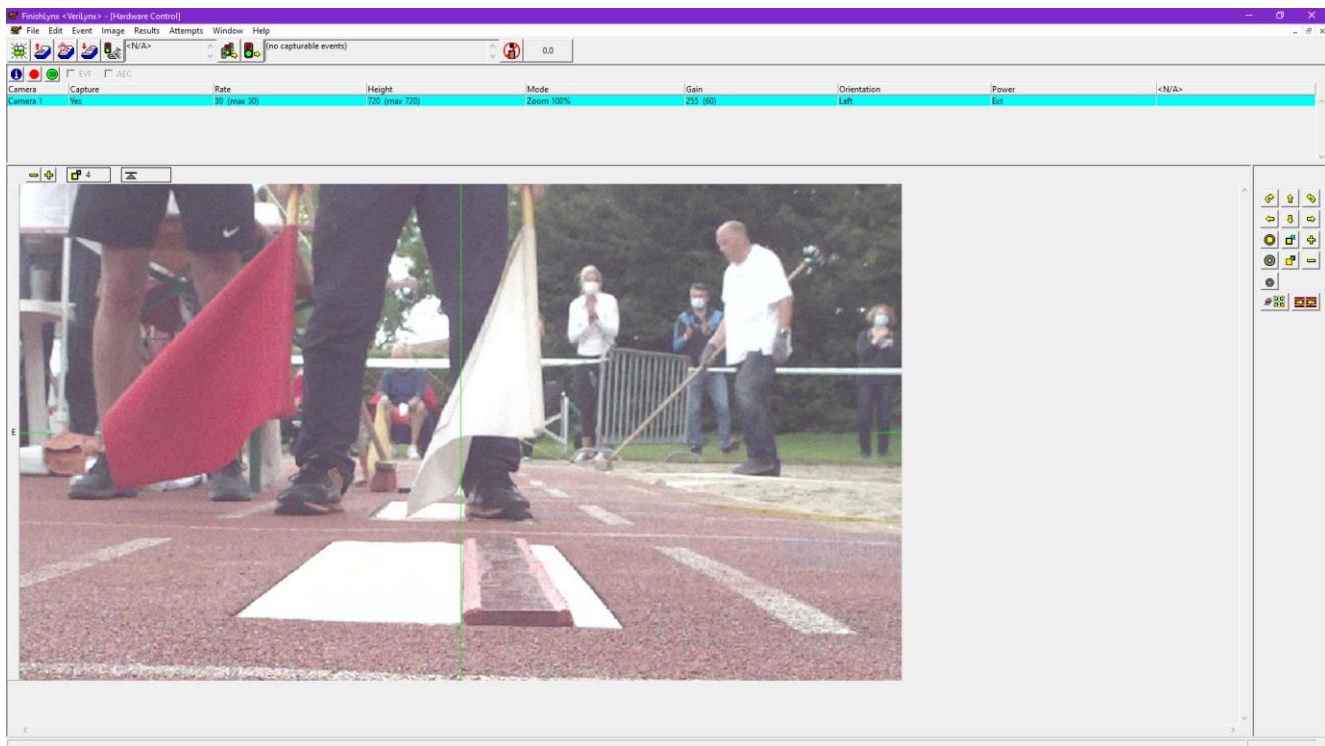


## Setup 4 Camera Alignment

1. Have someone stand on the take-off board to determine the field of view and focus point.
2. Click on the **Red Stop Sign** to put the camera into Alignment mode.
3. Use the **Remote Zoom**, **Auto Focus** and **Iris Control** buttons in the remote control panel to adjust the camera until you have the desired image. The full width of the take-off board should be in view and the vertical alignment line should appear at the edge of the take-off board.
  - a. **Iris & Zoom Steps:** 4 step sizes are available. Use the mouse to click the **Iris** or **Zoom** icons for the smallest change. Try to Shift-click, Ctrl-click or Ctrl-Shift-click (full range in two steps) for increasingly bigger steps.
  - b. **Auto Focus:** Ctrl-Shift-click the Focus Near or Focus Far icon to activate the camera's Automatic focus function. The focus icons will change when in auto focus.



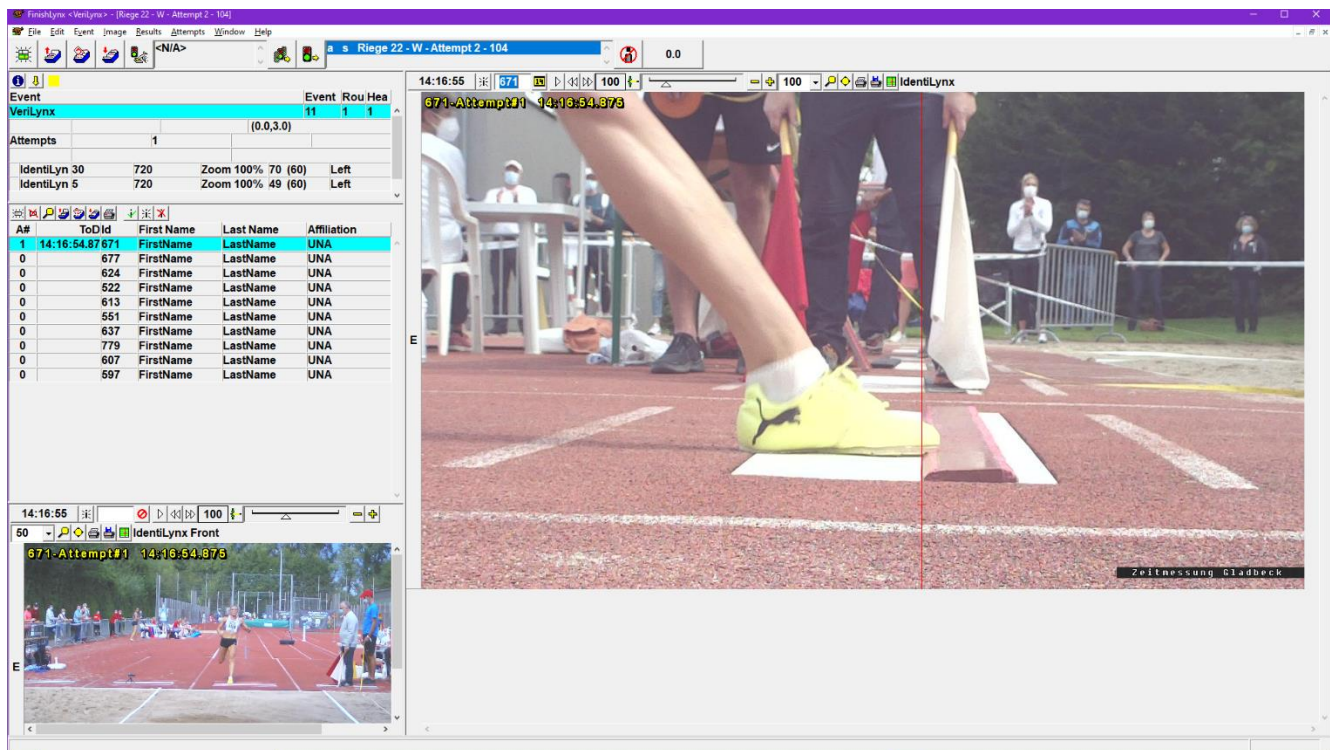
**Manual Focus Steps:** 3 step sizes are available. Use a simple click, Shift-click or Ctrl-click on the Focus Near or Focus Far icons to manually change the focus in increasingly bigger steps.





## Setup 5 Software Operations

4. Select an event from the schedule or create a new (blank) event.
5. Enable capture by clicking the capture icon (**Event | Toggle Capture Alt-T**).
6. After an athlete's jump, scroll the image to judge the take-off.
7. Enter the athlete's bib number (Identify by ID) and hit **Enter**.
  - This will add a line label, time of day (ToD) timestamp the current frame, export a JPEG (optional - requires NCP plug-in) and count up the attempt number (starts at 0).
  - To easily go back to any athlete's recorded jump, select the athlete in the *Results Zone* (or Shift-ArrowUp/Dn) and go to **Results | Previous/Next Attempt** (or Shift-ArrowLeft/Right) to cycle through each attempt.
8. Repeat for all athletes and all attempts in the flight.





## Advanced Tips

---

To limit the capture of unwanted image, set the Object Detection's **Active Area** to include only the vertical portion of the image that covers the take-off board (Camera Settings > Capture tab).

For details, go to this link: [ACM – Active Area](#).


To manage multiple VeriLynx cameras on the same network with multiple PCs, use the FinishLynx camera white list feature.

For details, go to this link: [Whitelist Management](#).

## FAQ

---

### How to remove an attempt from the Results Zone?

If the attempt to be removed is the last one entered, simply click the on the **Mask Attempt**  button . To remove an older attempt, select the athlete from the *Results Zone* and go to **Attempts | Edit Attempts...**, then select the correct attempt and hit **Delete**.

### How to automatically export a JPEG image when I mark an attempt?

Go to **File | Options... | Image Export** and select **On** for the *Auto-Export* feature.

When an attempt is entered, a JPEG file is automatically exported to the **Export Directory**: on the *Database Options* tab. By default, this is set to the c:\Lynx folder.

The filename format is <EEE-R-HH>\_<ID>\_<Attempt#>.jpg.

### Will I lose the captured image if my PC fails or loses power?

No. All image is written to disk in real-time. If the PC fails before the event is saved, go to c:\Lynx\temp to recover the lost event and image.

### How to quickly move through the VeriLynx image?

- **Shift+Click** an athlete in the Results Zone to view their last attempt
- **Shift+ArUp** or **ArDown** to go to the previous or next athlete (Results menu)
- **Shift+ArLeft** or **ArRight** to go to the previous or next attempt for the current athlete (Results menu)
- Mouse wheel up/down to move the current image pane forward or back
- **Alt+ArUp** to Play or Stop the selected image pane (Image menu)
- **Alt+ArLeft** or **ArRight** to go to the previous or next image frame of the selected image (Image menu)
- **Home** or **End** to go to the beginning or end of the selected image pane
- **Find by ID** by clicking the magnifying glass in the Results toolbar (Results menu)
- **Find by Time** by clicking the magnifying glass in the Image toolbar (Image menu)

\*For more shortcuts, go to <https://help.finishlynx.com/Content/Shortcuts.htm>