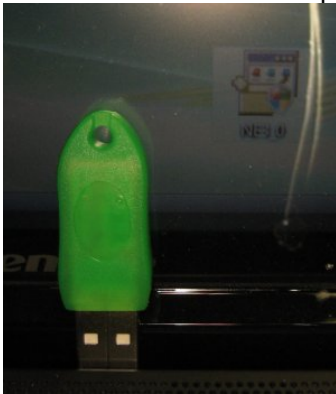
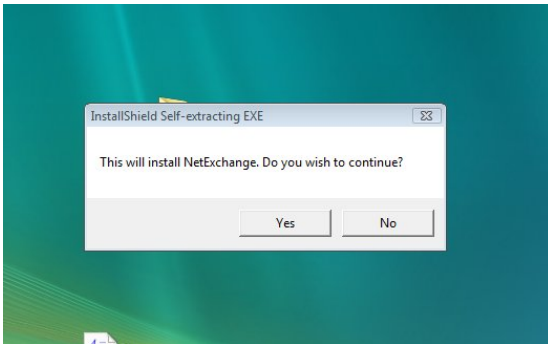


# INSTALLING NETEXCHANGE ONTO VISTA COMPUTER

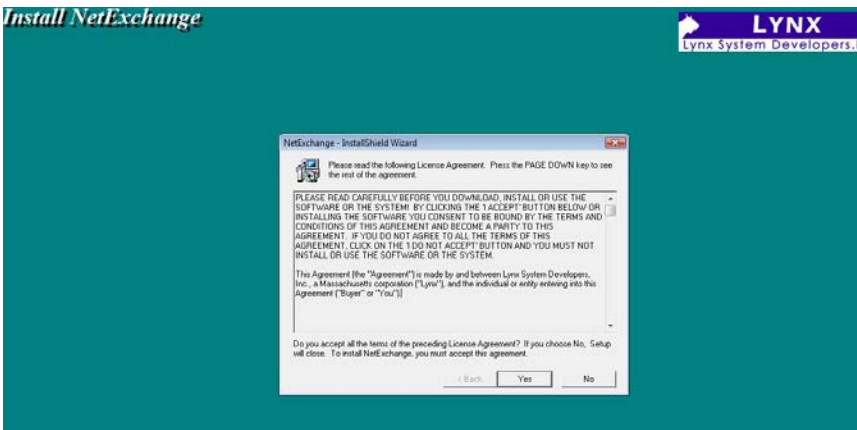
1. Find the NetExchange install file & USB key
  - Do not plug in the USB key. The below assumes you have copied the NetExchange install file to the desktop. NE3\_0



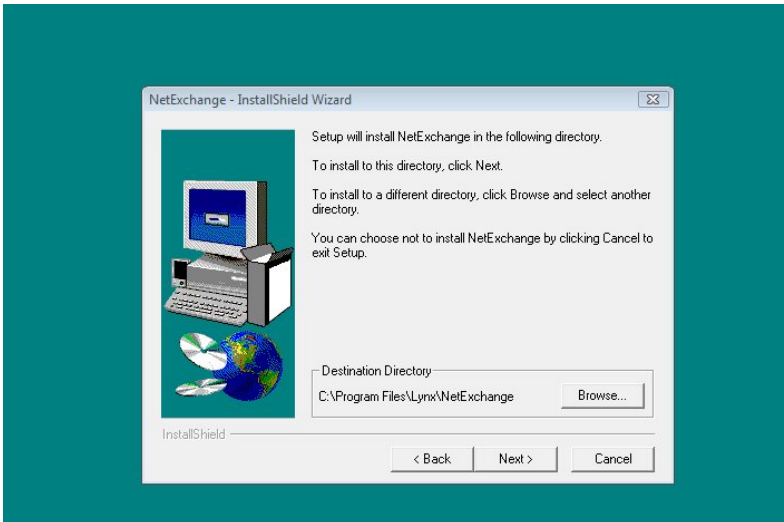
2. Click on NE3\_0



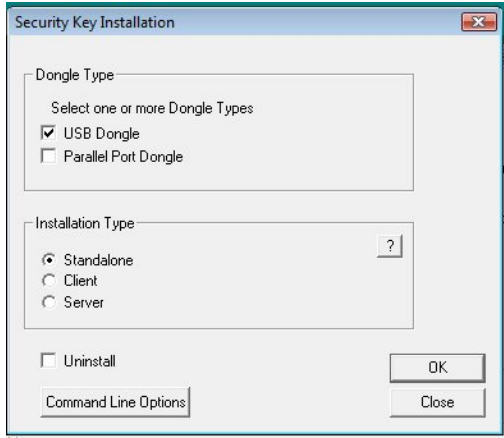
3. Click Yes



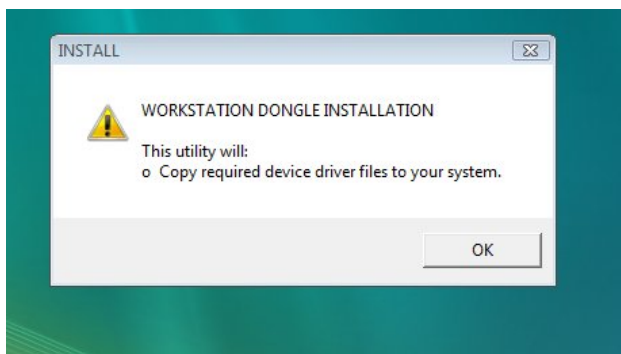
4. Click Yes



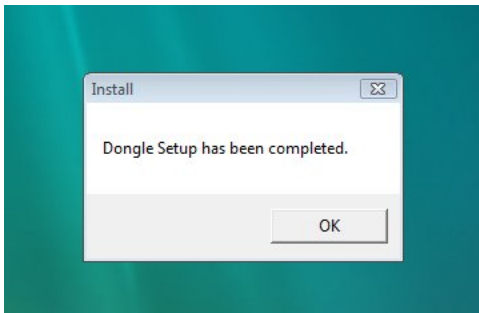
5. Click Next



6. Choose USB Dongle and Standalone. If you're using the Parallel Dongle choose that



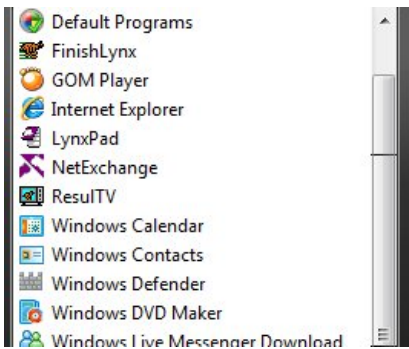
7. Click OK



8. Click OK

9. Now Plug in your USB key let windows Automatically find it.

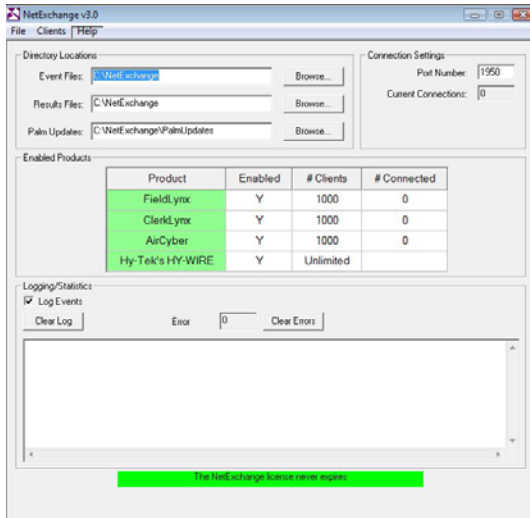
10. Once it's loaded click Start then Choose NetExchange



11. Click NetExchange



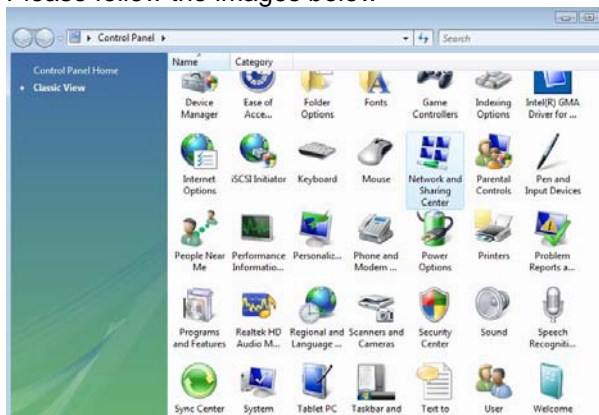
12. Click Unblock



Your NetExchange should now be lit up green indicating it has been installed correctly

## Next is assigning an IP# to your NetExchange computer

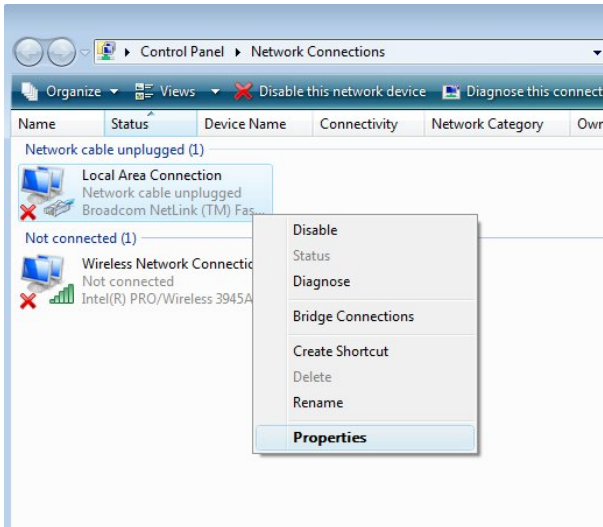
Please follow the images below -



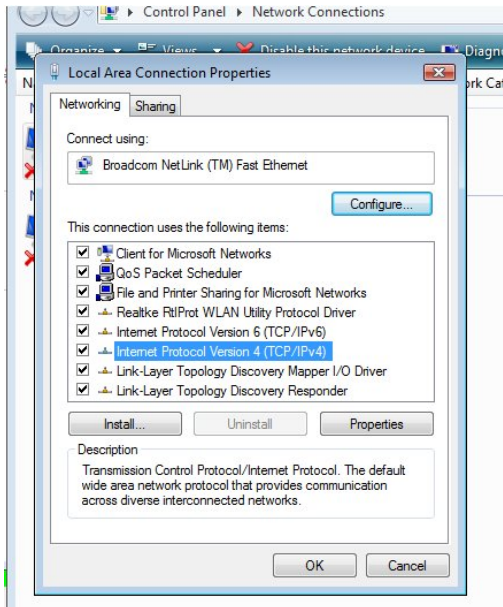
1. Go into the Control Panel



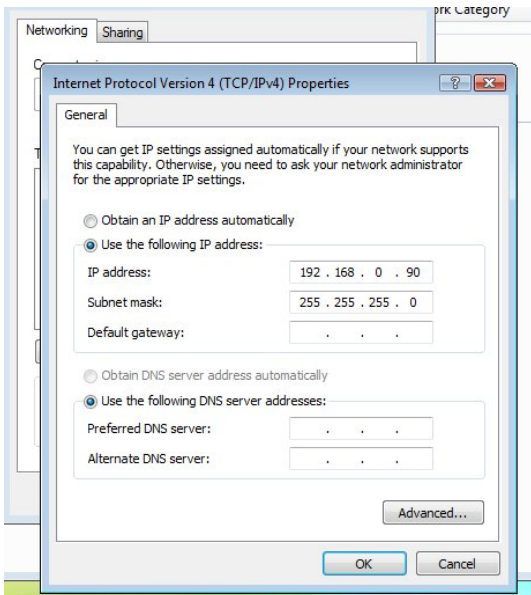
2. Click Manage network connections on the left



3. Right Click choose properties



4. Double Click TCP/IPv4

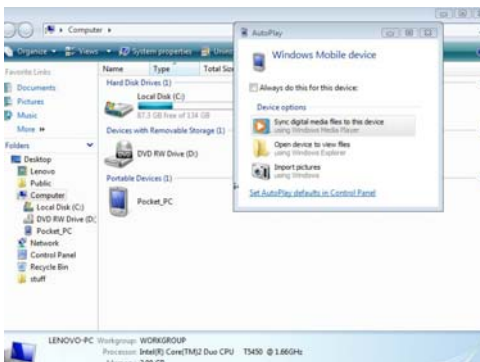


5. Use the numbers shown above and click ok. Then ok again.

## INSTALLING FIELD LYNX ONTO POCKET PCS

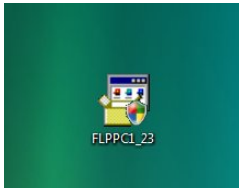


1. Connect your PocketPC to your computer through the USB

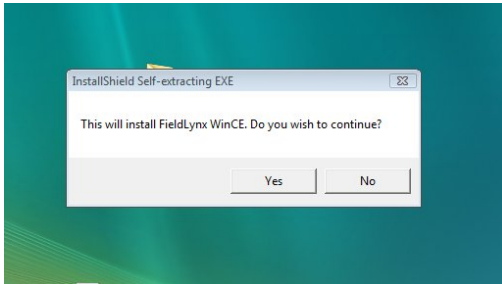


2. Go into Windows "My Computer" and verify Windows has located your PocketPC

3. Install FieldLynx onto your Computer. Download the file or run it from wherever you have it. In this example, I copied the installer to the desktop



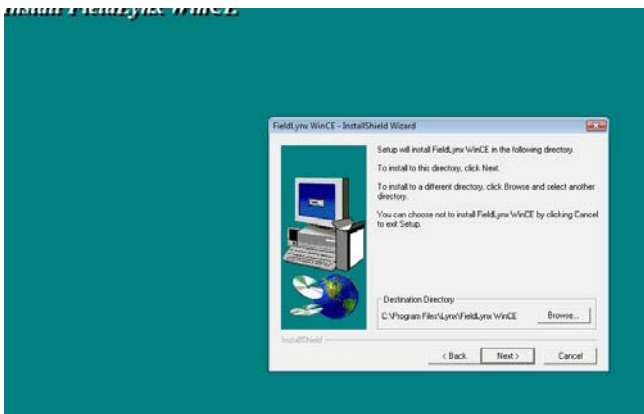
4. Double Click FLPPC1\_23



5. Click Yes

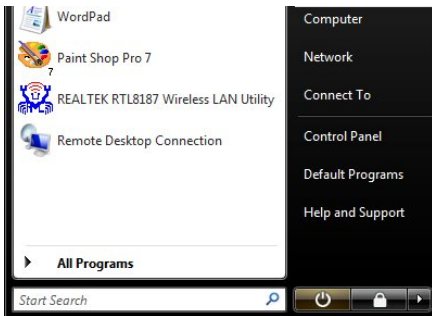


6. Click Yes

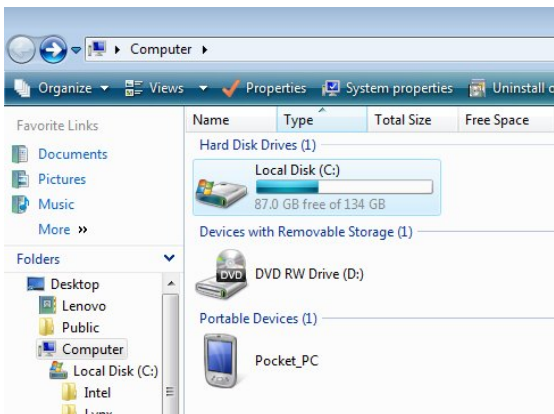


Pay attention to where you're installing FieldLynx. In this case the default is C:\Program Files\Lynx\FieldLynx WinCE

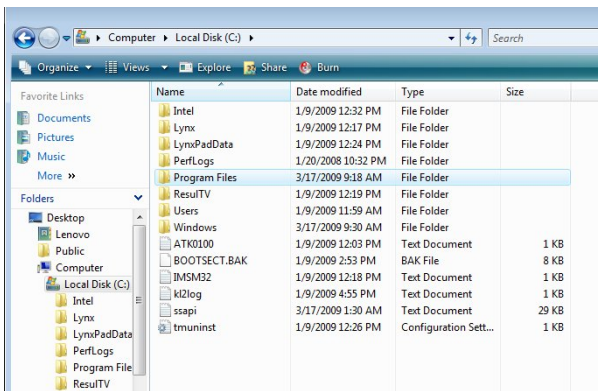
7. Click Next let the install continue then click finish when it's done. You've just installed FieldLynx onto your computer. The Field Lynx files you've just installed onto your computer must now be copied onto your Pocket PC. Click start in the lower left



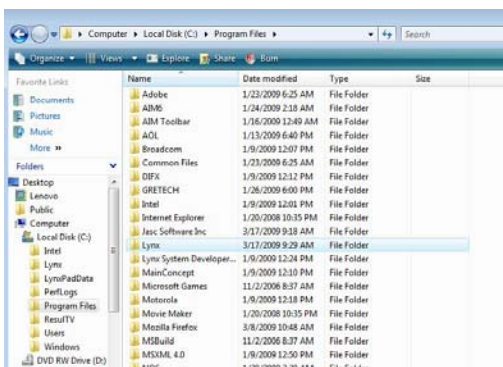
8. Click Computer



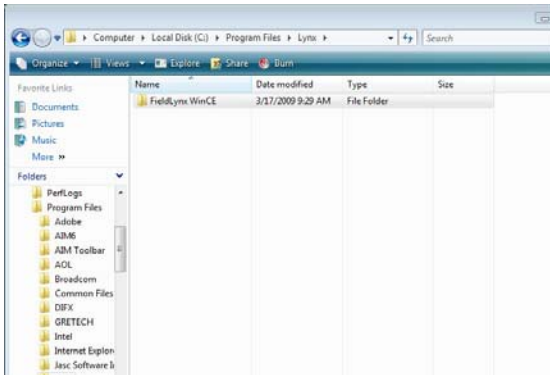
9. Double Click Local Disk C:



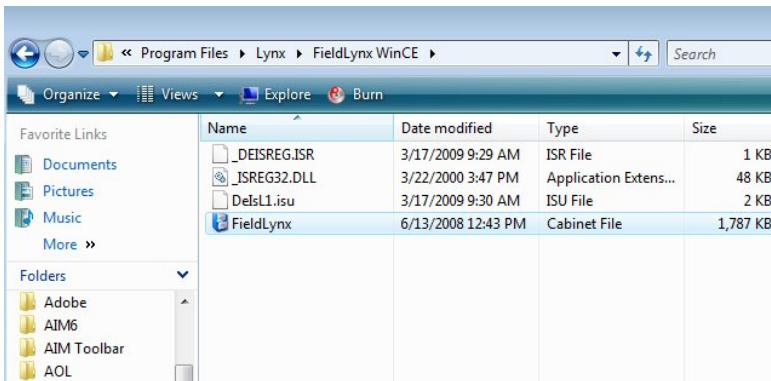
10. Double Click Program Files



11. Double Click Lynx



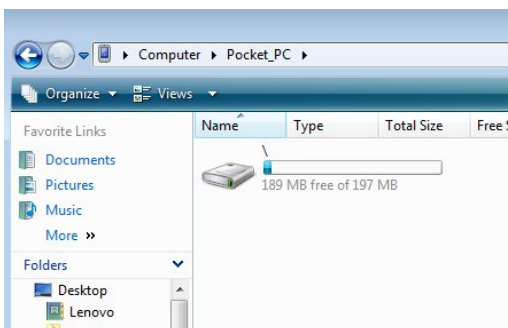
12. Double Click FieldLynx WinCE



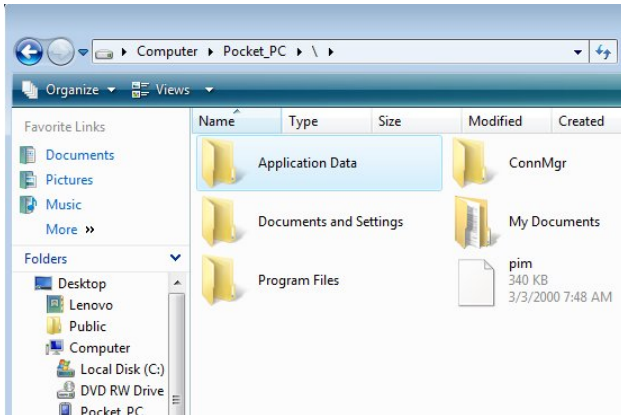
13. Right click on the file called FieldLynx this file is what we are going to paste onto the Pocket PC. Again right click on it and click Copy. Then minimize these screens.



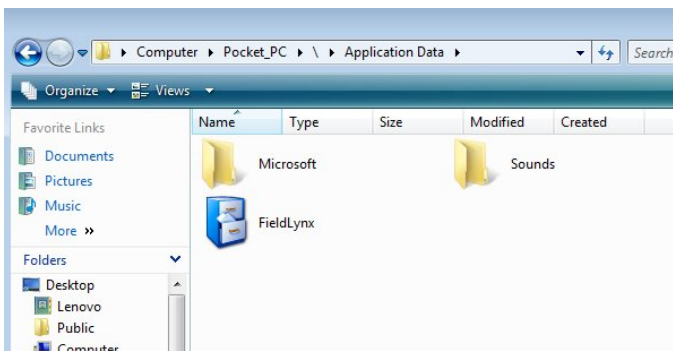
14. Double Click now on PocketPC



15. Double Click on this icon

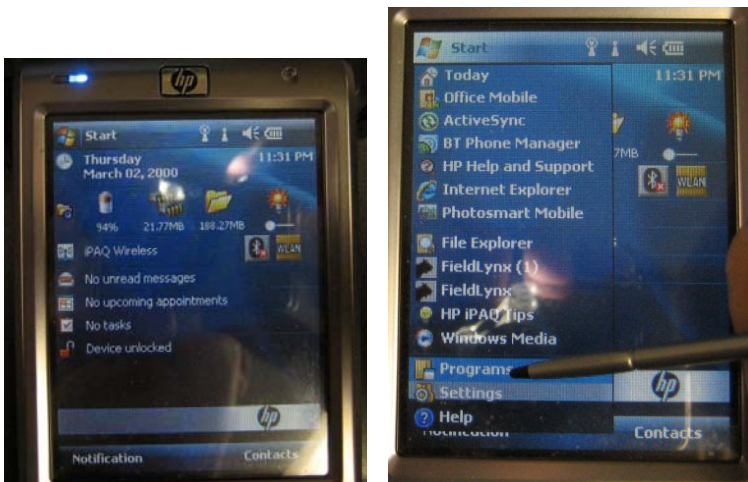


16. Double Click on Application Data



17. Left click and hit Paste. You've just copied the FieldLynx installer to the PocketPC.

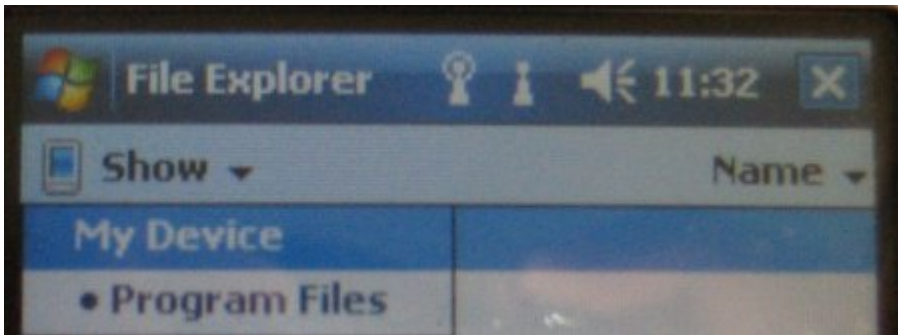
18. Now you will need to take your PocketPC and navigate to this directory to install FieldLynx.



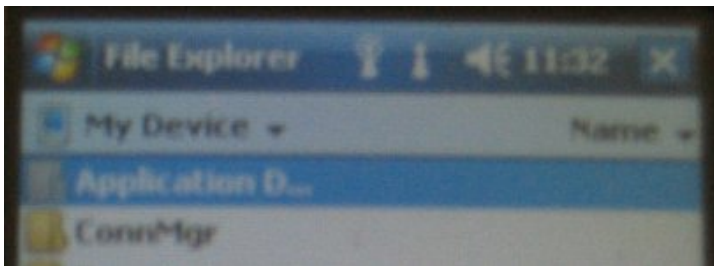
19. Click Programs



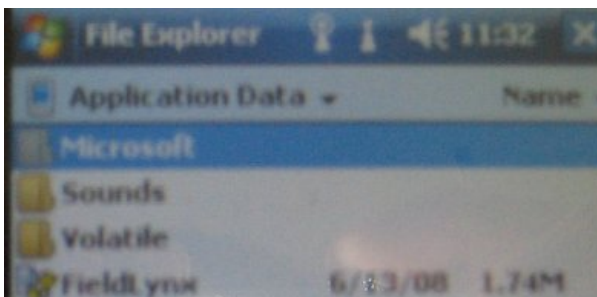
20. Choose File Explorer



21. Choose Show (up top) then select My Device



22. Choose Application Data



23. Choose FieldLynx this will install FieldLynx onto the PocketPC

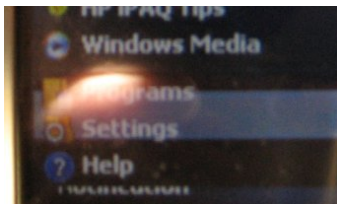


This will be the program installing  
Once it's complete you can click on the start menu and see the Field Lynx icon.

## **We now have to setup the POCKETPC with an IP # and to connect to your wireless Access point.**

This assumes you have already setup an Access point with an SSID of Lynx and an Ip # of 192.168.0.30

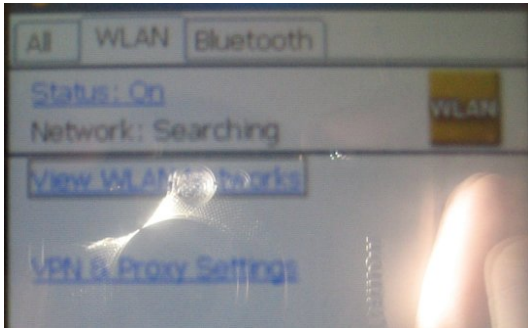
1. Click Start on the Pocket PC



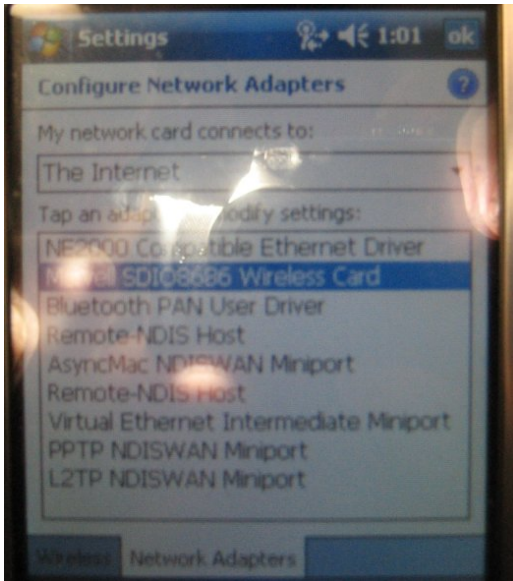
2. Click settings



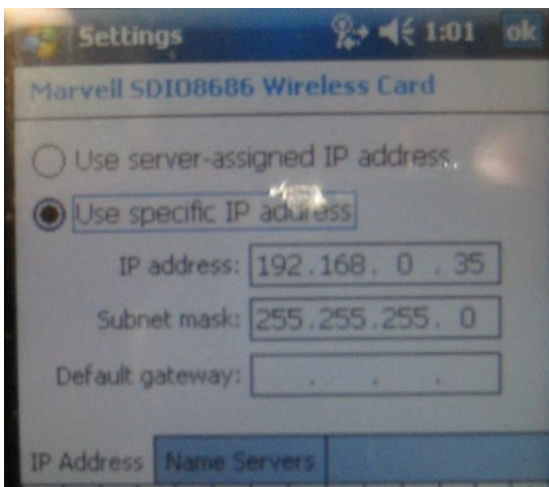
3. Click the connections tab on the bottom then HP iPAQ wireless



4. Click View WLAN Networks

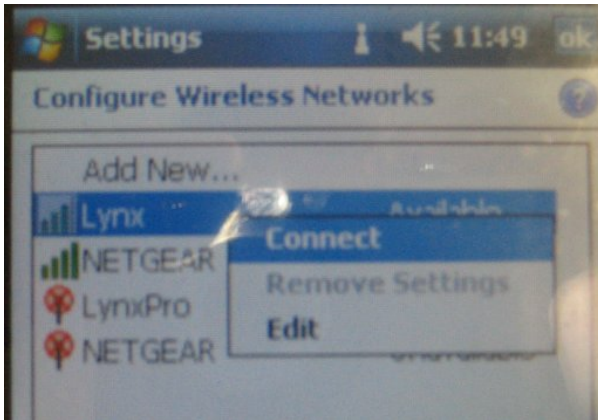


5. Click the Network Adapters tab Marvell SDIO8686 not NE2000Compatible Ethernet Driver. On other pocket pc's choose your installed wireless card.

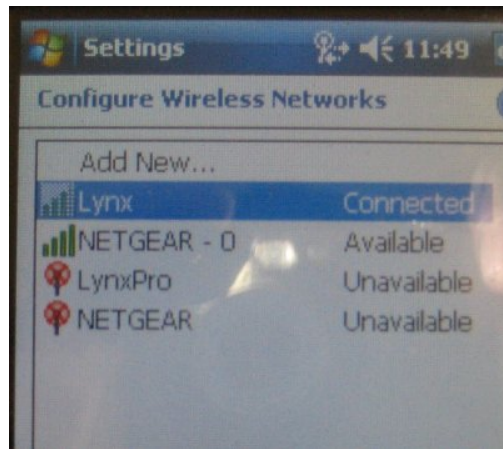
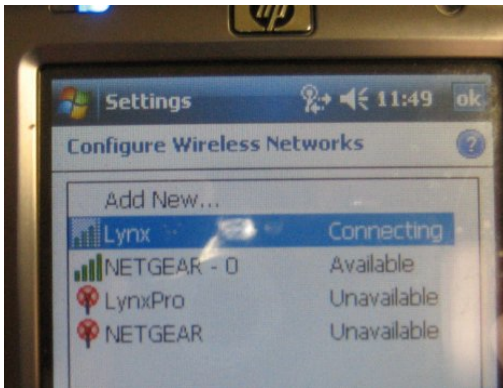


6. Choose Use Specific IP address then enter this IP address 192.168.0.35 if you have another PocketPC please assign it 192.168.0.36 if another 192.168.0.37 and so on. No two devices can I have the same IP #.

7. Click ok in the upper left hand corner. Then Click ok again.



8. Choose the Access Point that is connected to the hub which your NetExchange computer is also connected to and click Connect



You're now connected to the AP called Lynx.