

NOTE: This list is intended as a checklist to help you keep track of your progress. For full instructions, cautions and other important information, you must read the relevant sections contained in the manual. THESE INSTRUCTIONS ONLY APPLY TO 10baseT INSTALLATIONS THAT ARE USING A HUB.

Step 1 Install the FinishLynx 32 software on your computer. Make sure you enter the Serial Number exactly as it is entered on your installation disks. Do not forget any hyphens etc..

Figure 1 EtherLynx 2000 System Components



Step 2 Check the Display (monitor) settings on your computer. The minimum values are 16 bit or High. (Select Start: Settings: Control Panel: Display)

Step 3 Confirm your computer has an Ethernet network card installed and the settings in the Network Control Panel are properly configured.

Assign your computer an IP address and set up the correct TCP/IP configuration. (Select Start: Settings: Control Panel: Network.)

Choose the Configuration tab in this dialog box. Look in the white display window for a line that says TCP/IP (the dialog box on your computer should be similar to the one shown in the dialog box shown on the left side of Figure 2 Network Control.)

If the TCP/IP protocol is not listed, click on the Add button shown in the dialog box in Figure 2 Network Control . Select the Protocol option. Select Microsoft from the Manufacturer list. Finally, select the TCP/IP option (not TCP/IP dial up) and click on the Ok button.

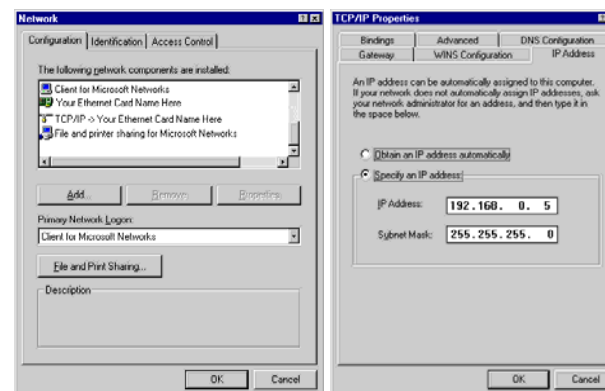
To confirm that TCP/IP is properly configured, click once on the line in the listing in the Network Control Panel Configuration tab that says TCP/IP to select it, and then click on the Properties. This will bring up a dialog box similar to the one shown on the right hand side of Figure 2.

We suggest that the settings in Network: Configuration: Properties: IP Address should be set to the values in the Properties dialog as shown in Figure 2:

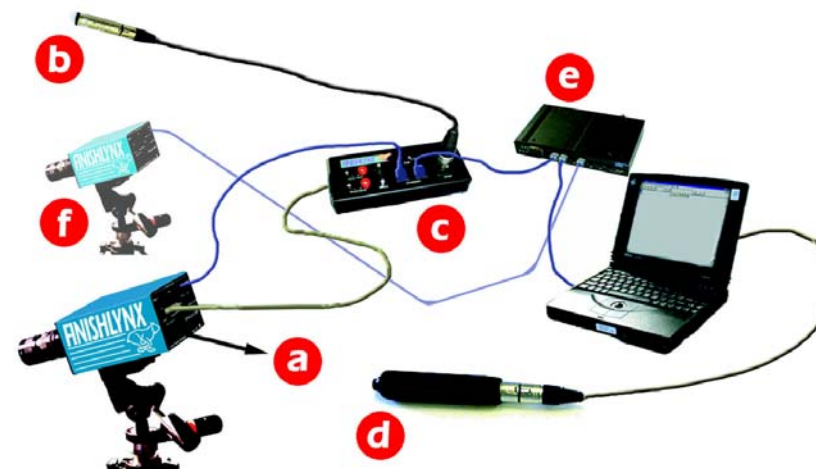
- IP address – 192.168.0.5
- Subnet Mask - 255.255.255.0

NOTE: After making changes in these settings you will need to restart your computer before they will take effect.

Figure 2 Network Control Panels (see other side for note for XP users)



Step 4 Connect the Hardware - see other side of sheet.



a. AC supply connection	b. Start Sensor
c. Connection Box	d. Capture Button
e. Hub	f. Optional additional Camera(s)

- Connect the Camera(s) to the Computer using the network cables provided. Make sure the Hub switch is set to "Yes."
- Connect the Capture Button to the COM port of your computer
- Connect the Connection Box to a Camera with the cable provided (with the DB15 connectors on each end).
- Connect the Start sensor to the Connection Box with the start signal cable provided.
- Connect the camera(s) to a power source. (Do not power up yet.)

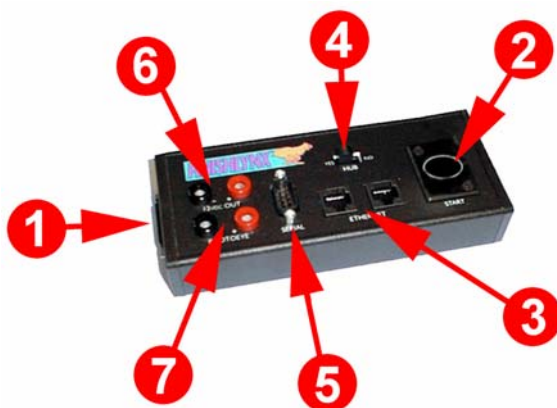


Network cable



Connection Box Cable

Figure 3 Connection Box



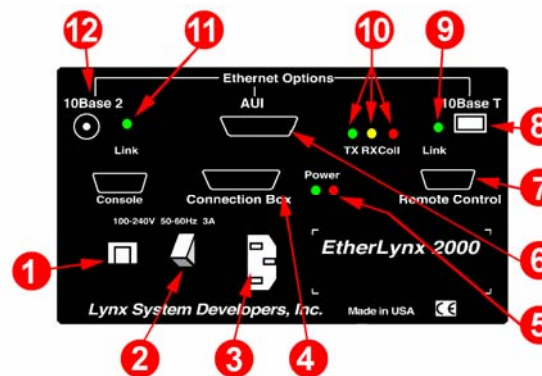
1. Camera
2. Start Sensor Cable
3. 10baseT connectors
4. Hub Switch
5. Serial Port (camera)
6. Photobeam
7. 12 volts D.C.

Step 5 Restart your computer if you have not done so since making changes in the Network Settings.

Step 6 Switch on the power to the EtherLynx Camera

Step 7 Start the FinishLynx Software by clicking on the FinishLynx icon.

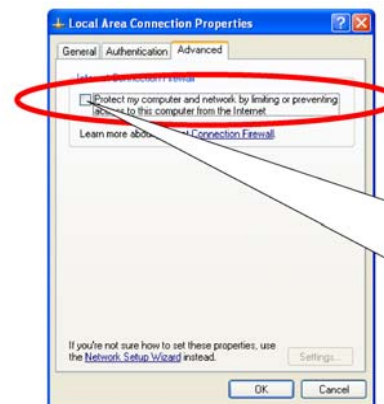
Figure 4 EtherLynx 2000 Camera (back view)



1. Fuse
2. Power switch
3. AC Connector
4. Connection Box Cable
5. AC Power Indicator Lights
6. Ethernet - Fiber Optic
7. Remote Control
8. Ethernet - 10baseT
9. Active Link Light 10baseT
10. Network Activity Lights
11. Active Link Light 10base2
12. Ethernet - 10base2 (Coaxial)

If I Did Everything Correctly, What Should Happen?

- The Active Link Light next to the 10baseT connector comes on when the camera is connected to an Ethernet network with 10 baseT cabling and the camera detects a good link.
- If this light is not on, check the position of the Hub Status switch on the connection box - Is it set to Hub:Yes?
- As the FinishLynx software communicates with the camera, the Transmit and Receive LED's will flash and a series of green status bars will appear in the bottom right corner of the FinishLynx Hardware Control screen. If these bars do not appear, go back to the beginning of these instructions and check all the all Ethernet connections.



XP Users Only

When setting up your Network Properties – IP Address, etc. make sure that this box is unchecked.