



1. FieldLynx Hardware - Initial Setup

- 1.1. Connect the FieldLynx docking Cradle to the COM (serial) port on the back of your computer.



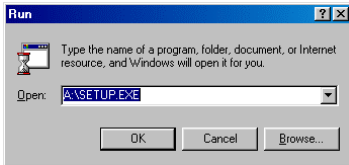
Computer COM (serial) port

- 1.2. Insert the **Palm Desktop** CD into your computer's CD drive.
- 1.3. Click the highlighted **Install** button shown below.





2. FieldLynx Software - Host Computer

- 2.1. Insert the **FieldLynx** disk into your computer.
- 2.2. Use **Add/Remove Programs**, or click on **Run** in the Windows **Start** menu and Type **A:\SETUP.EXE** in the dialog box and select **OK**.



- 2.3. Follow the instructions to install the software.

3. FieldLynx Software - FieldLynx Unit

- 3.1. If the Hot Sync icon  is not visible in the "Windows System Tray" on the right hand side of the taskbar at the bottom of the Windows screen on the Host Computer, click on the **HotSync Manager icon**  (on your desktop or in the **Start:Programs** menu).

- 3.2.  Click on the **Palm Install** icon (on host computer desktop or in the **Start:Programs** menu).

- 3.3. Select the FieldLynx **User** name. If it is not visible follow steps in 3.4.

- 3.4. To add the FieldLynx **User**:



⇒ Click on the **Palm Desktop Icon**. (on your desktop or in the **Start:Programs** menu).

⇒ Select **Users...** from the **Tools** drop down menu, and click on the **New** button.

⇒ Enter "FieldLynx" as the user name and click on the **OK** button.

- 3.5. When the **FieldLynx** user is selected, click on the **Add...** button.

- 3.6. Select the file called **fieldlynx.prc**. By default the FieldLynx installer places this file in the **C:\FieldLynx** folder. If there are other PRC files in this directory add them as well.

- 3.7. Tap the **Done** option

- 3.8. Place the FieldLynx Unit in the cradle and press the **HotSync** button on the cradle. (**Ensure no active applications are using the COM port i.e. Hy-Tek**)

4. Upgrading FieldLynx Software and Installing Patches

Do not perform a hard reset to clear programs and data. If you do this you will need to reinstall FieldLynx complete with your serial number. NOTE Serial numbers are linked to specific Palm units. Follow the instructions given in section 3 above.



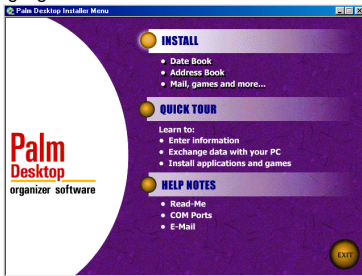
1. FieldLynx Hardware - Initial Setup

- 1.1. Connect the FieldLynx docking Cradle to the COM (serial) port on the back of your computer.



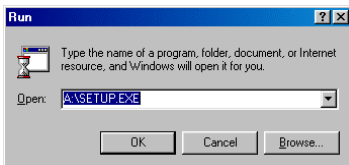
Computer COM (serial) port

- 1.2. Insert the **Palm Desktop** CD into your computer's CD drive.
- 1.3. Click the highlighted **Install** button shown below.





2. FieldLynx Software - Host Computer

- 2.1. Insert the **FieldLynx** disk into your computer.
- 2.2. Use **Add/Remove Programs**, or click on **Run** in the Windows **Start** menu and Type **A:\SETUP.EXE** in the dialog box and select **OK**.



- 2.3. Follow the instructions to install the software.

3. FieldLynx Software - FieldLynx Unit

- 3.1. If the Hot Sync icon  is not visible in the "Windows System Tray" on the right hand side of the taskbar at the bottom of the Windows screen on the Host Computer, click on the **HotSync Manager icon**  (on your desktop or in the **Start:Programs** menu).

- 3.2.  Click on the **Palm Install** icon (on host computer desktop or in the **Start:Programs** menu).

- 3.3. Select the FieldLynx **User** name. If it is not visible follow steps in 3.4.

- 3.4. To add the FieldLynx **User**:



⇒ Click on the **Palm Desktop Icon**. (on your desktop or in the **Start:Programs** menu).

⇒ Select **Users...** from the **Tools** drop down menu, and click on the **New** button.

⇒ Enter "FieldLynx" as the user name and click on the **OK** button.

- 3.5. When the **FieldLynx** user is selected, click on the **Add...** button.

- 3.6. Select the file called **fieldlynx.prc**. By default the FieldLynx installer places this file in the **C:\FieldLynx** folder.

- 3.7. Tap the **Done** option

- 3.8. Place the FieldLynx Unit in the cradle and press the **HotSync** button on the cradle. (**Ensure no active applications are using the COM port i.e. Hy-Tek**)

4. Upgrading FieldLynx Software and Installing Patches

Do not perform a hard reset to clear programs and data. If you do this you will need to reinstall FieldLynx complete with your serial number. NOTE Serial numbers are linked to specific Palm units. Follow the instructions given in section 3 above.