





1. Checking for Installed Plugins


- 1.1. Switch on the Palm Pilot and tap the **FieldLynx** icon.
- 1.2. Tap the **Menu** icon.
- 1.3. Tap the **Preferences** option.
You will see a list of installed **Plugins** in the Plugin display area.

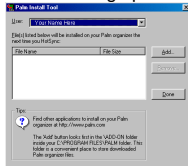
2. To Add a Plugin – Host Computer

- 2.1. Connect the FieldLynx docking cradle to the COM (serial port).
 Computer COM (serial) port
- 2.2. Insert the **FieldLynx Plugin** disk into your computer.
- 2.3. Use **Add/Remove** Programs, or click on **Run** in the Windows Start menu, type **A:\SETUP.EXE** in the dialog box and select **OK**.
- 2.4. Follow the instructions to install the software. We recommend that you install the plugin software to the suggested directory – it will make your life easier during the rest of the installation process.

3. To Add a Plugin – FieldLynx Unit

- 3.1. If the  **HotSync** manager icon is not visible in the "Windows System Tray" on the right hand side of the taskbar at the bottom of your Windows screen, click on the **HotSync Manager icon** (on your desktop or in the **Start:Programs** menu).

- 3.2.  Click on the **Palm Install** icon (on host computer desktop or in the **Start:Programs** menu).
This will bring up the following dialog box:



- 3.3. Select the FieldLynx **User** name. If it is not visible follow steps in 3.4.
- 3.4. To add the FieldLynx **User**:



- ⇒ Click on the **Palm Pilot Icon** (on your desktop or in the **Start:Programs** menu).
- ⇒ Select **Users...** from the **Tools** drop down menu, and click on the **New** button.
- ⇒ Enter "FieldLynx" as the user name and click on the **OK** button.

- 3.5. When the **FieldLynx** user is selected, click on the **Add...** button.
- 3.6. Select ALL the files in the folder created by the FieldLynx plugin installer. By default the FieldLynx installer places this file in the **C:\FieldLynx\plugins\"plugin name"** folder.
- 3.7. Tap the **Done** option.
- 3.8. Place the FieldLynx Unit in the cradle and press the **HotSync** button on the cradle.
- 3.9. Repeat step 1 Checking for Installed Plugins. If the new plugin does not appear repeat steps 3.1 – 3.9.

4. Configuring a Plugin

- 4.1. Switch on your Palm Pilot and tap the **FieldLynx** icon.
- 4.2. Tap the **Menu** button.
- 4.3. Tap the **Preferences** option.
You will see a list of installed Plugins in the **Plugin** display area. Pull down lists are indicated by the symbol "▼" Tap the symbol "▼" next to the word **General** in the top right corner of the screen. A pull-down menu of installed plugins will appear.
- 4.4. Select the **Plugin** you wish to configure from the list by tapping it with the stylus.

A configuration screen for the chosen plugin will appear. Select the options you want by checking the appropriate box or by selecting from pull down menus.

NOTE: FieldLynx can provide display information for scoreboards configured for Metric or English displays, or both at the same time. **Custom Messages** can be sent to the scoreboard from the scoreboard configuration screen.

- 4.5. Tap **Done**.