



# Quick Start Guide

Lynx Wind Gauge (WG-Lynx)

Lynx System Developers, Inc.

Please verify that your WG-Lynx Wind Gauge contains the components pictured below.  
If not, or if you need additional support, please call: **USA (978) 556-9780**

## LYNX WIND GAUGE COMPONENTS

Item	Description	ID
	FinishLynx-compatible wind gauge	WG-Lynx
	Wind Gauge Input Cable	N/A
	200 Foot XLR Cable	C43-200

## ADDITIONAL EQUIPMENT REQUIRED

- **Hardware:** Lynx timing system and camera hardware
- **Computer:** Laptop running any recent version of Microsoft Windows
- **FinishLynx Software:** <http://www.finishlynx.com/product/software/finishlynx-results-software/>



# Quick Start Guide

Wind Gauge (WG-Lynx)

## STEP 1: SET UP THE FINISHLYNX CAMERA AND COMPUTER

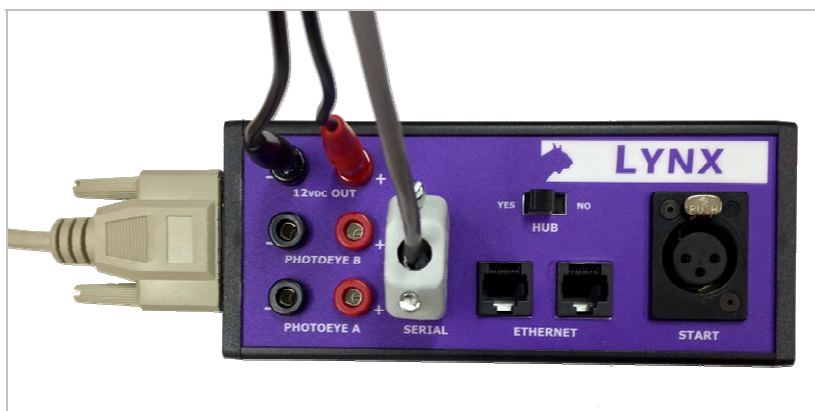
- a. Using the QSG for your camera package, set up your camera and load it into the computer.
  - Find your QSG on our website at <http://www.finishlynx.com/support/quick-start-guides/>
- b. Make sure to connect the Connection Box to the camera using the supplied 15-pin cord and the Connection Box port on the back of the camera.

## STEP 2: SET UP AND CONNECT THE WIND GAUGE

- a. Place Wind Gauge on top of the tripod.
- b. Using the supplied 200 Foot XLR extension cable, connect the male end to the Wind Gauge XLR port.
- c. Connect the female end of the XLR cable to the provided Wind Gauge Input Cable.



- d. Connect the Wind Gauge Input Cable to the Connection Box serial port and the power leads to the color-coded red and black 12VDC ports on the Connection Box.



- e. When the Gauge is receiving power, the red light next to the XLR port on the Gauge will start to blink.

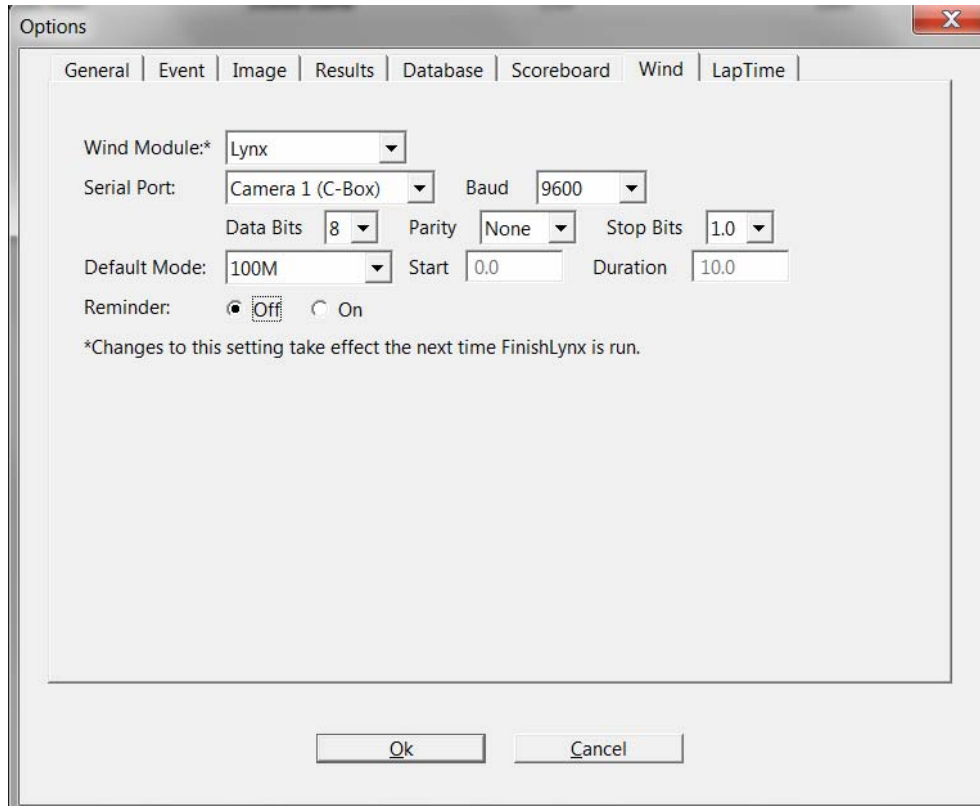


# Quick Start Guide

Wind Gauge (WG-Lynx)

## STEP 3: CONFIGURE SETTINGS IN THE FINISHLYNX SOFTWARE

- Start the FinishLynx Program.
- Open the FinishLynx Options menu by selecting **File** then **Options**, and go to the **Wind** tab. The options should be configured as shown below. After doing so, close and reopen FinishLynx.



## STEP 4: SEND A FINISHLYNX START IMPULSE

- Open a new race for testing.
- Start the race using a start sensor or manual start. Wait for 10 seconds and a wind reading will appear.

