

# External Wireless Bridge (EXT\_WiFi)

## Quick start guide

### Introduction

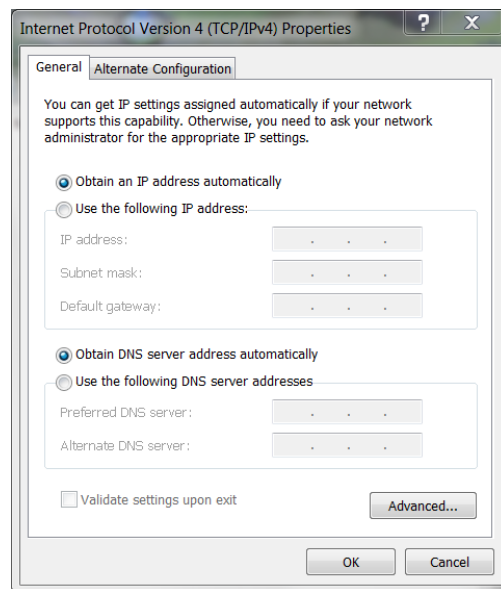
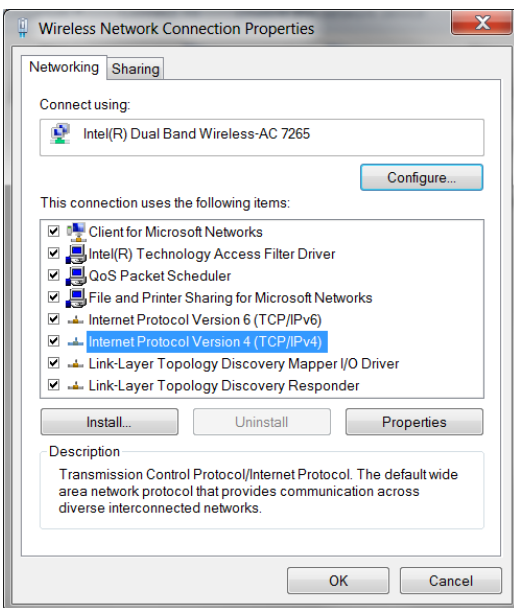
This quick start guide is for connecting an External Wireless Bridge to your Vision camera to enable wireless communication to your network. This can be desirable if the distance from the timing computers is too far for a run of Ethernet cord or if there is no practical way to run the cord. There should be as much of a line of sight as possible from the wireless router to the camera location to ensure best transmission. You will need **power** available at the camera location as there will be no power over Ethernet while using this option. If at any point you need additional help, contact Tech Support: [support@finishlynx.com](mailto:support@finishlynx.com).

### You Will Need

- ✓ Vision camera
- ✓ Vonets Wireless Bridge
- ✓ Wireless router
- ✓ Aux power adapter for Vision camera

### Step 1: Set IP Settings

1. Open the **Start** menu.
  - a. Click on **Control Panel** or settings.
  - b. Go to network and internet settings and then network and sharing center.
2. Click **Change adapter settings** and right-click on the **wireless adapter**. Make sure that the adapter is enabled and select **Properties**.
3. Click on **Internet Protocol Version 4(TCP/IPv4)** then **Properties**.
4. Select **Obtain an IP address automatically** and **Obtain DNS server automatically**.



5. Check that the Firewalls are turned off.
6. In the control panel, click on **system and security**, and then **Windows Firewall**.
7. Click **Turn Windows Firewall on or off**, and ensure that the firewalls are all turned off. Windows 10 has been known to turn the firewall back on occasionally.

### Step 2: Power on Vonets Bridge and Connect to the Vonets Network

1. Connect the Vonets device to power using a USB port on the computer.
2. Open **wireless network connections**.
3. Connect to the Vonets network in the list. The SSID will be VONETS\_ the last six numbers of the MAC address. The password default is 12345678

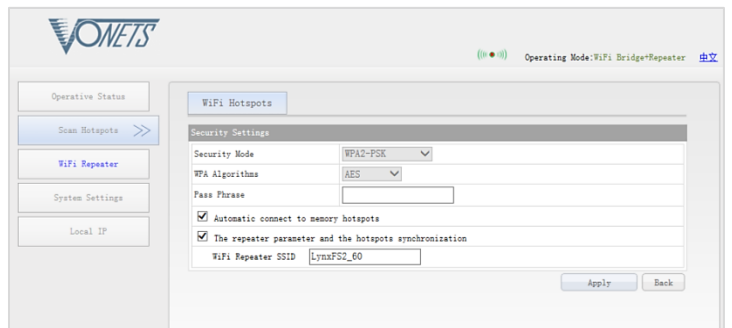
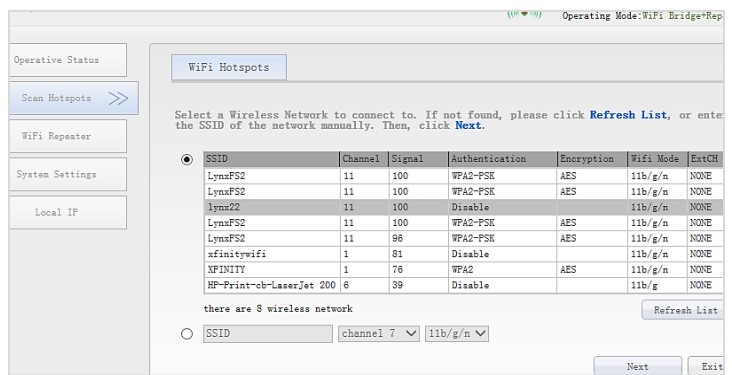


### Step 3: Change Vonets Settings

1. Open a web browser (e.g. Internet Explorer) and go to <http://vonets.cfg>.



2. Username and Password are both **admin** by default.
3. Choose the wireless network you would like to connect to, click next.
4. Enter network password if needed, confirm the password is correct then click apply.
5. Reboot the device. Either disconnect and reconnect the USB cord, or press the reset button on the side of the device.



**Note:** Follow the same steps in the future to configure the device for a different network, if needed. You will connect to the network that the device was previously configured for. Repeat the steps for connecting in the internet browser and configuring the settings for the new network.

### Step 4: Connect to the Camera

1. On the camera back, connect the Vonets Bridge to the USB port for power and the Ethernet port for LAN connection. Use provided Dual Lock adhesive to keep the bridge in place.
2. Power up the camera. You will need to use a power adapter as power-over-Ethernet will not be available.
3. Open FinishLynx and ensure the camera loads correctly. This may take longer than normal due to wireless transmission times.

**Note:** If the camera disconnects intermittently due to wireless issues, there is a hidden setting in FinishLynx that may help.

1. To access hidden settings, go to the file menu.
2. Hold down **CTRL + SHIFT** and select **Options**. Be careful making changes in this menu.
3. Navigate to **Hardware | Ethernet | MaxStatusFails**.
4. By increasing this setting, you get a few extra milliseconds to keep the connection to the camera if a few packets are lost. This can make all the difference in keeping the connection.

