

RadioLynx Wireless Start

Quick Start Guide

Introduction

Before you begin, please make sure to download and install your RadioLynx plug-in.

Once your plug-in has been installed, follow the figures and steps below to connect the RadioLynx components and to configure FinishLynx. If you need additional support, please contact us at: **USA (978) 556-9780** or email support@finishlynx.com.

NOTE: Parts 1B and 1C: **EtherLynx Vision** connections and configurations
 Parts 2B and 2C: **EtherLynx 2000+**, **Fusion**, and **PRO** connections and configurations
 Parts 3B and 3C: **EtherLynx 2000** connections and configurations

Part 1A: Setting up the RadioLynx Wireless Transmitter (Starter)

- ON/OFF** button
- Banana Plug connection: use **Green** and **Black** connectors.
- Connection to Start Signal Generator: use the special **Normally Open Start Sensor** (tipped with red shrink wrap)




Part 1B: Setting up the RadioLynx Wireless Receiver (Vision Camera)

NOTE: For the Vision camera, the **Receiver** plugs into the **RadioLynx Port**.

- Separate the Receiver wire at the black plastic junction.
- Plug the Radio wire into the RadioLynx Port on the back of the camera.



Part 1C: Configuring FinishLynx (Vision Camera)

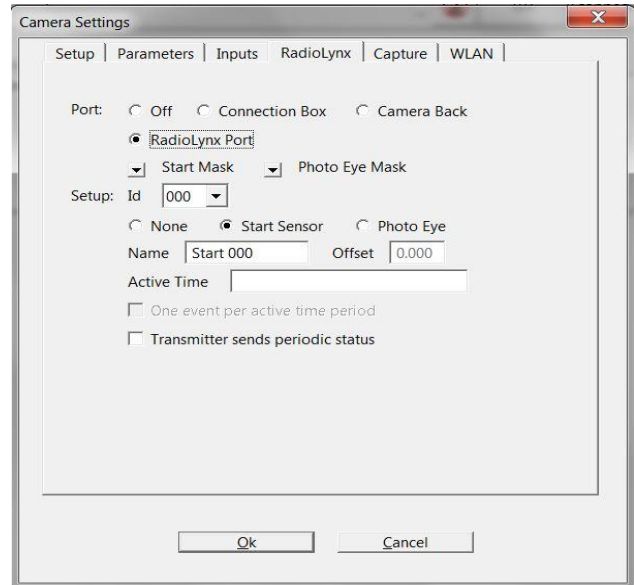
- With the EtherLynx Vision camera set up and turned on, start FinishLynx. The **Hardware Control** screen appears.
- Click , the information icon. The **Camera Settings** dialog box appears.
- Click the **Inputs** tab and select the **Start Sensor: None** radio button.
- Click the **RadioLynx** tab.
- Select the **Port: RadioLynx Port** radio button.
- From the **Setup: Id** dropdown list, click to select **000**.

NOTE: The RadioLynx Transmitter defaults to **Channel 0** and **Signal Type STA**, which corresponds to **Id 000** in FinishLynx.

- Select the **Start Sensor** radio button.

OPTIONAL: Type a name into the text box provided. If you're using more than one RadioLynx Transmitter, it is recommended that you name each one something different.

e.g. "400 Meter Start," "200 Meter Start," etc.



- Click **OK**.
- Turn on the RadioLynx Transmitter and confirm that a start signal is transmitted to FinishLynx by listening for a *beep*.

NOTE: Three (3) beeps means the RadioLynx Transmitter batteries need recharging soon. You have approximately 50 start signals remaining after the first triple beep. To view the battery level on the LCD, press the **ON/OFF** button once.


Part 2B: Setting up the RadioLynx Wireless Receiver (EtherLynx 2000+, Fusion, PRO Cameras)

NOTE: For the EtherLynx 2000+, Fusion and PRO cameras, the Receiver connects to the back of the camera.

- Power Connection: use **Red** connector only to **Red (DC) 12v 0.1A Output**.
- DB9 Serial Data Connector to port labeled **SERIAL** located on camera back.



Part 2C: Configuring FinishLynx (EtherLynx 2000+, Fusion, PRO Cameras)

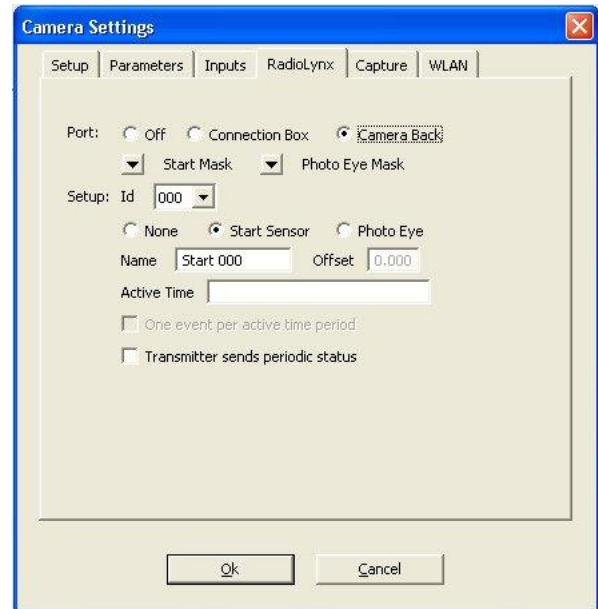
- a. With your camera set up and turned on, start FinishLynx. The **Hardware Control** screen appears.
- b. Click , the Information icon. The **Camera Settings** dialog box appears.
- c. Click the **Inputs** tab and select the **Start sensor: None** radio button.
- d. Click the **RadioLynx** tab.
- e. Select the **Port: Camera Back** radio button.
- f. From the **Setup: Id** dropdown list, click to select **000**.

NOTE: The RadioLynx Transmitter defaults to **Channel 0** and **Signal Type STA**, which corresponds to **Id 000** in FinishLynx.

- g. Select the **Start Sensor** radio button.

OPTIONAL: Type a name in the text box provided. If you're using more than one RadioLynx Transmitter, it's recommended that you name each one something different.

e.g. "400 Meter Start," "200 Meter Start," etc.



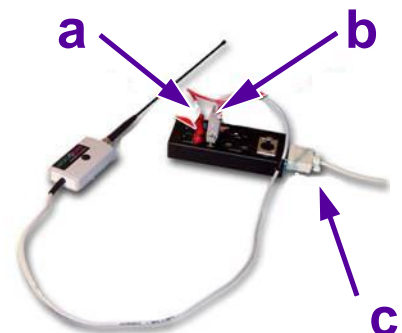
- h. Click **Ok**.
- i. Turn on the RadioLynx Transmitter and confirm that a start signal is transmitted to FinishLynx by listening for a **beep**.

NOTE: Connection Box is grayed out for **Port** on **Fusion** cameras. Three beeps means the RadioLynx Transmitter batteries need recharging soon. You have approximately 50 start signals remaining after the first triple beep. To view the battery level on the LCD, press the **ON/OFF** button once.


Part 3B: Setting up the RadioLynx Wireless Receiver (EtherLynx 2000 Camera)

NOTE: For the **EtherLynx 2000** cameras, the **Receiver** connects to the back of the **Connection Box**.

- a. Power Connection: use **Red** connector only to **Red 12v DC Out**
- b. DB9 Serial Data Connector
- c. DB25 connection to EtherLynx 2000 camera



Part 3C: Configuring FinishLynx (EtherLynx 2000 Camera)

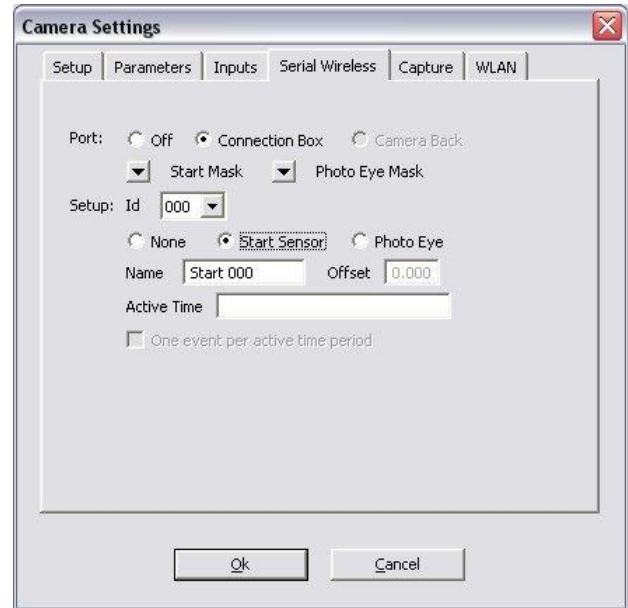
- a. With an EtherLynx 2000 camera set up and turned on, start FinishLynx. The **Hardware Control** screen appears.
- b. Click , the information icon. The **Camera Settings** dialog box appears.
- c. Click the **Inputs** tab and then select the **Start Sensor: None** radio button.
- d. Click the **Serial Wireless** tab.
- e. Select the **Port: Connection Box** radio button.
- f. From the **Setup: Id** dropdown list, click to select **000**.

NOTE: The RadioLynx Transmitter defaults to **Channel 0** and **Signal Type STA**, which corresponds to **Id 000** in FinishLynx.

- g. Select the **Start Sensor** radio button.

OPTIONAL: Type a name in the text box provided. If you're using more than one RadioLynx Transmitter, it is recommended that you name each one something different.

e.g. "400 Meter Start," "200 Meter Start" etc.



- h. Click **Ok**.
- i. Turn on the RadioLynx Transmitter and confirm that a start signal is transmitted to FinishLynx by listening for a *beep*.