

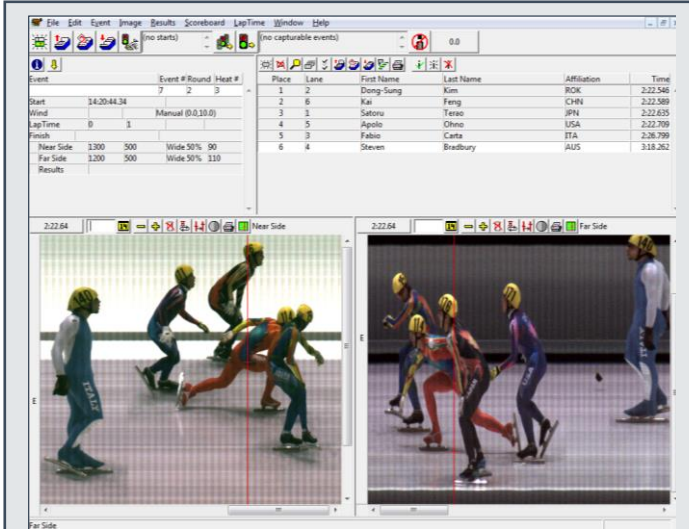


SHORT TRACK SPEED SKATING

LYNX SYSTEM DEVELOPERS, INC.

SPEED SKATING SILVER PACKAGE

SILVER PACKAGE



The Lynx Short Track Silver Package adds a second EtherLynx Vision camera to the configuration of the Bronze Package. With the addition of a second camera, photo-finish operators have the luxury of a reverse-angle image to aid in race analysis when one competitor is obscuring the skate of another. It also adds the convenience of a remote camera positioning platform for precise alignment of the far side camera – directly from within the software interface.

The FinishLynx software also allows for automatic time tracking between both cameras on the screen at the same time. This makes evaluation of obstructed athletes easy and fast – as the image above illustrates.

TWO SIDES TO EVERY FINISH

The Silver Package maintains the tradition of Lynx packages by providing everything you need to achieve a two-camera, reverse-angle photo-finish timing solution. You will get the cameras, lenses, and even a remote positioning platform for easy and precise alignment. Also included is the FinishLynx software, a start sensor with all necessary cables, a tripod and all other camera mounting hardware: a truly comprehensive and powerful technology implementation.

The configuration of two color cameras, a primary and reverse-angle (far side), is perfectly suited for high-level events where you need the ability to time races with confidence, even when the primary photo finish camera view is blocked by another athlete. This is easy, due to the multiple camera time-tracking feature of the software.

COMPONENTS

2 Powerful Photo-Finish Cameras

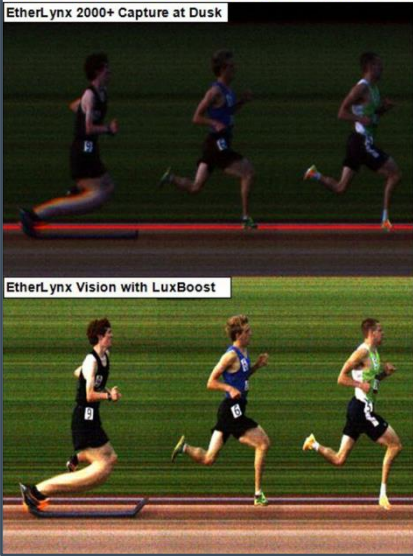
- **Primary Camera: EtherLynx Vision** – Color, Timer-Enabled, High-Resolution (2,000 fps)
 - EasyAlign 2-D Video Alignment
 - LuxBoost Low-Light Amplification
 - Internal Camera Level
 - CS-Mount 2.8-10mm P-Iris Lens
- **Reverse-Angle Camera: EtherLynx Vision** – Color, 1,000 fps
 - EasyAlign 2-D Video Alignment
 - Internal Camera Level
 - Remote Control Camera Positioner
 - C-Mount 8-48mm Motorized Zoom Lens
- Tripod & Mounting Hardware for Precise Adjustment
- Heavy duty 74" Camera Tripod w/ Leveling Guide
- All-inclusive Camera and Start Cable sets
- All necessary network cables and hub
- Built-in interface to scoreboards and wind gauges
- Custom Carrying Case
- **FinishLynx** – Multi-Language Photo-Finish Software
- **LynxPad** – Event Management Software

FEATURES

- A second reverse-angle camera, networked with the primary camera, for fast and accurate evaluation of partially obscured athletes.
- The remote camera lens and positioner allows operators to micro-adjust the camera on the far side of the track from within the FinishLynx software.
- Fully upgradeable to integrate with manual or transponder-based lap counting and split times.
- Optional camera upgrades like Wi-Fi, Electronic Filter Control, Internal Battery Backup, & more.



The Value of LuxBoost Low-Light Amplification



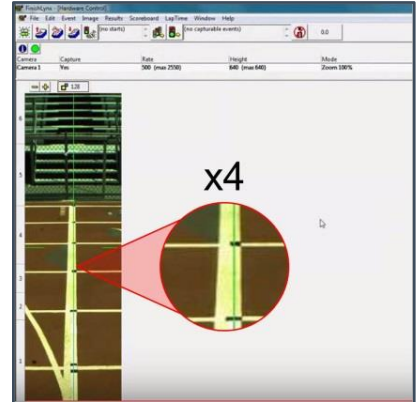
The key to accurate photo-finish timing is high quality images taken by cameras that are precisely aligned with the finish line. The Speed Skating Silver Package makes this easy thanks to a combination of factors. Underlying everything is the EtherLynx Vision camera, which has incredible light sensitivity, plus LuxBoost low-light amplification that produces high quality images at low light levels and high scan rates up to 2,000 frames per second.

At the heart of the Silver Package is the EtherLynx Vision digital photo-finish camera, which transfers high-speed race data via a Gigabit Power-Over-Ethernet connection for instant results. Thanks to the fast and reliable connection between the camera and computer—and more than two decades of software enhancements—FinishLynx timing systems have become the most popular photo-finish system in the world.

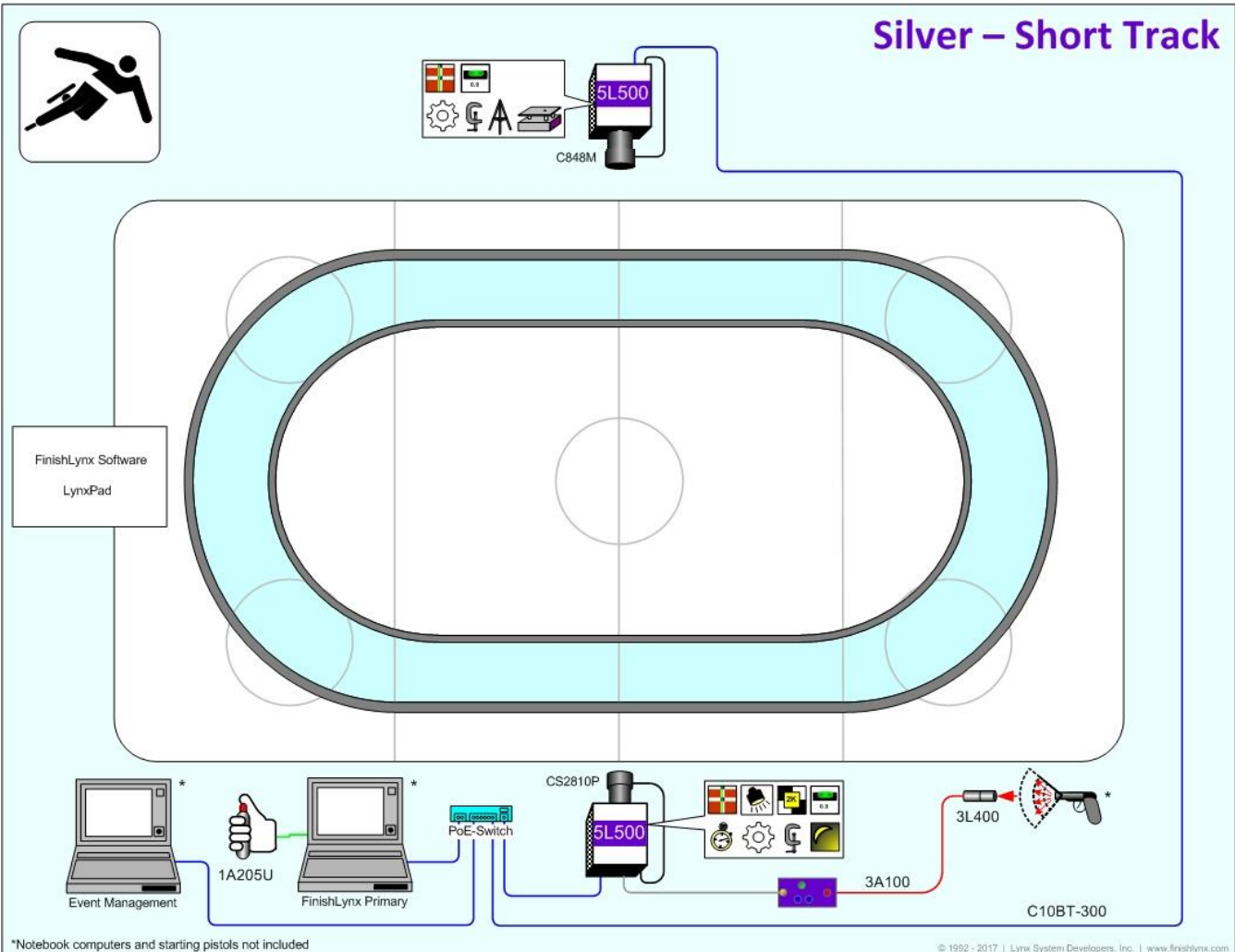
Take comfort in knowing that Lynx customers receive free software updates for life. Plus, the modular design of Lynx technology means that you can add enhancements to your timing system any time in the future without disrupting your existing system. Add-ons like scoreboards, chip timing, camera

upgrades, photo-cells and other third-party technology can be added as your needs change.

When you choose a Lynx packaged solution, you can be safe in the knowledge that you have made a smart investment. You will have everything you need to capture, post, and distribute fast and accurate skating results.



EasyAlign 2-D video makes camera alignment easier than ever.



*Notebook computers and starting pistols not included