
LynxPad 3.11 Release Notes



Contents

Copyright Notice	1
-------------------------	----------

LynxPad 3.11 Release Notes	3
-----------------------------------	----------

Obtaining Lynx products and information.....	3
Obtaining technical support.....	3
Exporting data.....	4
Relay team members in delimited files enhancement.....	6
How to import and export delimited files.....	7
New Relay Entry (L) Record.....	8

LynxPad 3.10 Release Notes	11
-----------------------------------	-----------

Support for multi-events.....	13
Setting up a multi-event.....	14
Ability to customize a multi-event.....	16
Ability to seed final event by points.....	17
On-screen point display for individual events.....	18
Printable results options.....	18
Printable multi-events results summary.....	18
Ability to send multi-event points to a scoreboard.....	19
New general features.....	21
Enhanced event view.....	21
Ability to set up each round of a multi-round event uniquely.....	21
Relay support for individual team members.....	22
New report features.....	25
More options for Meet Programs and Event Lists reports.....	25
Ability to print mixed-gender events.....	26
Finish Line Sheets report enhancements.....	27

Copyright Notice

Use of this product is governed by the Sales and License Agreement signed by you or your agent (the "Buyer"), Section 7a of which is reprinted here.

7a. Ownership of Software. Lynx System Developers, Inc. (Lynx) owns and retains all title, copyright, trademark, and other proprietary rights in the software, firmware and documentation provided with the software and firmware (collectively, "Software"). Buyer acknowledges that the Software is the confidential property of Lynx and the Buyer will not disclose the Software to any other person without Lynx's consent.

FinishLynx, EtherLynx, CyberScoreboard, ReacTime, and the FinishLynx logo are registered trademarks of Lynx System Developers, Inc.

AirCyber, AirLynx, ClerkLynx, CyberScoreboard, FieldLynx, InterLynx, LaserLynx, Live CyberScoreboard, Live CyberScoreboard Relay, Lynx Translation Tool, LynxPad, LynxTV, NetExchange Server, Office Client, ResultTV, SerialLynx, ScoreLynx, and VCPD are trademarks of Lynx System Developers, Inc.

Windows 95, Windows 98, Windows 2000, Windows ME, Windows NT, Windows XP, Windows CE (WinCE), and ActiveSync are registered trademarks of Microsoft Corp.

Palm OS, Palm Computing, Graffiti, and HotSync, are registered trademarks of Palm, Inc. Palm, the Palm logo, and the HotSync logo are trademarks of Palm, Inc.

Photoshop and Postscript are registered trademarks of Adobe Systems Incorporated.

All other trademarks are properties of their respective companies.

LynxPad 3.11 Release Notes

May 24, 2007

Copyright © 1992-2007 by Lynx System Developers, Inc.

All rights reserved.

CHAPTER 1

LynxPad 3.11 Release Notes

This document contains information about new features in LynxPad 3.11 since the release of LynxPad 3.10.

In This Chapter

Obtaining Lynx products and information	3
Obtaining technical support	3
Exporting data	4
Relay team members in delimited files enhancement	6

Obtaining Lynx products and information

There are three ways to obtain Lynx products and information:

- Go to the *Lynx website* (<http://www.finishlynx.com/>) and click the **Products** link
- Call (978) 556-9780 and ask to speak with someone in sales, or
- Send an email to our *sales department* (<mailto:sales@finishlynx.com>).

Obtaining technical support

There are three ways to obtain technical support for Lynx products:

- Go to the *Lynx website* (<http://www.finishlynx.com/>) and click the **Support** link
- Call (978) 556-9780 and ask to speak with someone in tech support, or
- Send an email to the *technical support department* (<mailto:support@finishlynx.com>).

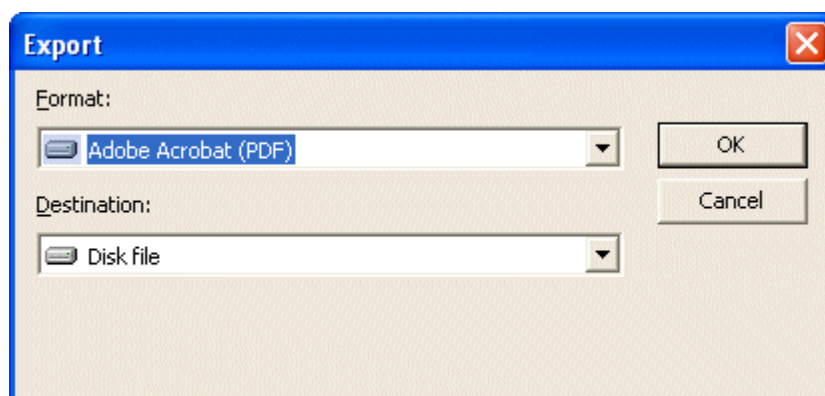
Exporting data

LynxPad allows you to export data that can be compiled into a report into any of the following formats:

- Adobe Acrobat (PDF)
- HTML 3.2
- HTML 4.0
- Microsoft Excel 97-2000 (XLS)
- Microsoft Excel 97-2000 - Data only (XLS)
- Microsoft Word (RTF)
- Microsoft Word – Editable (RTF)
- Rich Text Format (RTF)
- Separated Values (CSV)
- Tab Separated Text (TTX)
- Text (TXT), and
- XML.

➤ **To export report data to another format:**

- 1 Click **Reports** from the Menu bar and select the report format you want to export to a different data format.
- 2 On every Report configuration dialog, there is an **Export Data** check box. Click to check this box and then click **Ok**. The Export Data dialog appears.



- 3 Select the format you want to export the data to from the **Format:** drop-down list.
- 4 From the **Destination:** drop-down list:
 - If you want to save the exported report to a disk, click **Disk File**.

- If you want to launch the application to view the report you are exporting, click **Application**.
- 5** Click **Ok** and then follow the rest of the instructions on the screen.

Relay team members in delimited files enhancement

LynxPad can import and export raw data in the form of semi-colon and comma delimited files, allowing competition data to flow between copies of LynxPad.

LynxPad 3.11 now allows you to add relay team members to semi-colon and comma delimited files.

The method for importing and exporting semi-colon and comma delimited files into LynxPad has not changed. However, the delimited file Relay Entry Record that LynxPad uses has changed.

➤ **Note:**

It is important that you change the number of relay members to accurately reflect the participants in your competition. Therefore, if you are directing a competition, we suggest that you clarify in the online registration forms how many relay members each team can enter.

To change the default number of relay members from the number four, access the **Add/Edit Event** dialog. Then, type a new number in the **Relay | Number of Members:** text field.

The screenshot shows the 'Add/Edit Event' dialog box with the following details:

- Event Information:** Event #: 31, Event Name: Women 4x100 Meter, Gender: Female, Event Type: Track, Distance: 400.
- Scoring:** Score This Event.
- Relays:** Number of Members: 4 (circled in red).
- Measurement System:** Entries: Metric, Results: Metric.
- Rounds:** Number of Rounds: 1.
- Seeding:** Number of Lanes: 8, Lane/Position Assignment: Standard Lanes, Heat/Flight Assignment: Timed Finals, Heat/Flight Order: Best To Worst, Advancement: Time.

#	Round Name	Date	Time
1	Final	7/9/2003	05:00 PM

(Press CTRL+TAB to tab out of grid)

Buttons: Update, Cancel, Done

How to import and export delimited files

Individual and relay competition entries in the form of a semi-colon or comma delimited text file can be imported into LynxPad.

➤ **Instructions:**

Note: These instructions assume you have a semi-colon or comma delimited text file available somewhere on your computer or network.

- 1 Run LynxPad.
- 2 Open a competition.
- 3 Click **File** from the Menu bar and select **Import**. A drop-down menu appears.
- 4 Select either **Semi-Colon Delimited Entries...** or **Comma Delimited Entries...** from the drop-down menu. The **Open** dialog appears.
- 5 Navigate to where the semi-colon or comma delimited file is saved.
- 6 Click to highlight the file, and then click **Open**. LynxPad begins importing the entries.

➤ **Notes about importing:**

- If an entry has errors in it, it is skipped. When LynxPad completes the import, an **Import Results** dialog appears, detailing any skipped entries.
- The last directory used for importing becomes the default directory for your next import.

New Relay Entry (L) Record

Note: Any Relay Entry (L) Records that were formatted in LynxPad 3.0 are supported by LynxPad 3.11.

The following table demonstrates the components required in an L, or Relay Entry, record.

Data	Max Characters	Notes
L	1	Delineates "Relay Entry Record"
Team Name	25	<ul style="list-style-type: none"> ▪ Use Unattached if unknown ▪ Required field
Designation	1	A, B, C, etc.
Relay Gender	1	<ul style="list-style-type: none"> ▪ M = male ▪ F = female ▪ Required field
Event Number	5	Required field
Entry Time	10	hh:mm:ss.tt (44.55, 4:19.14)
Event Division	2	Not implemented in LynxPad 3.11
Relay Member 1 ID	6	Set to 0 if unknown
Relay Member 1 Last Name	20	Required field
Relay Member 1 First Name	20	Required field
Relay Member 1 Gender	1	<ul style="list-style-type: none"> ▪ M = male ▪ F = female
"	"	"
"	"	"
"	"	"
"	"	"
Relay Member 16 ID	6	Set to 0 if unknown

Relay Member 16 Last Name	20	Required field
Relay Member 16 First Name	20	Required field
Relay Member 16 Gender	1	<ul style="list-style-type: none">▪ M = male▪ F = female

➤ **Relay Entry (L) record example:**

L;Hurricane High
School;A;M;12;4:01.44;123;Smith;John;M;...321;Jones;David;M;[CRLF]

CHAPTER 2

LynxPad 3.10 Release Notes

This document contains information about new features in LynxPad 3.10 since the release of LynxPad 3.0.

Lynx System Developers, Inc., is especially pleased to announce the ability to add multi-events such as the decathlon and heptathlon to your competition.

In This Chapter

Support for multi-events	13
New general features	21
New report features	25

Support for multi-events

LynxPad now allows you to add multi-events to your competition, including:

- Men's Decathlon
- Women's Heptathlon
- Men's NCAA Indoor Heptathlon
- Outdoor Pentathlon
- Indoor Pentathlon, and
- Weight Pentathlon.

When you add a multi-event to your competition, LynxPad offers the following features:

- Ability to seed final event by points
- Ability to customize a multi-event
- On-screen point display for individual events
- Ability to print results, including multi-event points
- Printable multi-event summary of entire event, including best mark and points, and
- Ability to send multi-event points to a scoreboard.

Note: LynxPad 3.10 comes with a sample lynx.cmp file that contains a heptathlon multi-event for you to practice with.


To access the sample lynx.cmp file:

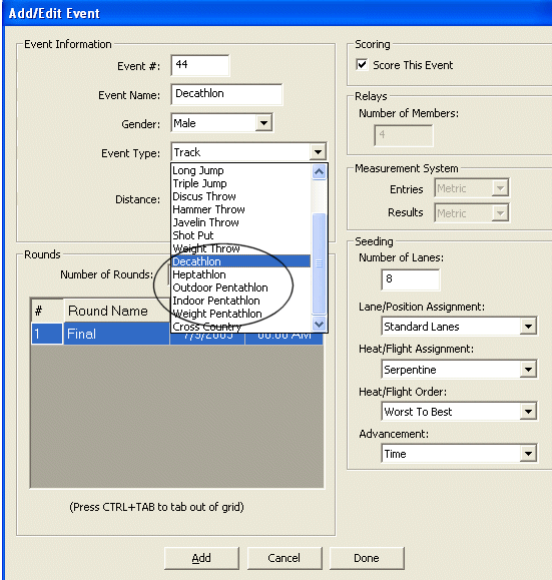
1. Click **File** from the Menu bar and select **Open...**. The (new) **Load or Create a New Competition** dialog appears.
 2. Click to select **Load an existing LynxPad competition**, and then click **Ok**.
 3. Navigate to **C:\LynxPadData\SampleData\lynx.cmp**. The sample competition opens on your screen.
-

Setting up a multi-event

LynxPad 3.10 now allows you to add the following multi-events:

- decathlon
 - heptathlon (Women's, or Men's NCAA Indoor), and
 - pentathlon (Indoor, Outdoor, or Weight).
- **To add a multi-event to your competition:**
- 1 Activate the **Events** window by clicking its title bar.

- 2 *Either* click the  icon *or* click **Events | Add Event** from the Menu bar. The **Add/Edit Event** dialog appears.
- 3 Complete the remaining fields by typing or selecting the information from drop-down lists. From the **Event Type** drop-down list, select the appropriate corresponding event.



Add/Edit Event

Event Information

Event #: 44

Event Name: Decathlon

Gender: Male

Event Type: Track

Distance: None

Rounds

Number of Rounds: 1

#	Round Name
1	Final

(Press CTRL+TAB to tab out of grid)

Scoring

Score This Event

Relays

Number of Members: 4

Measurement System

Entries: Metric

Results: Metric

Seeding

Number of Lanes: 8

Lane/Position Assignment: Standard Lanes

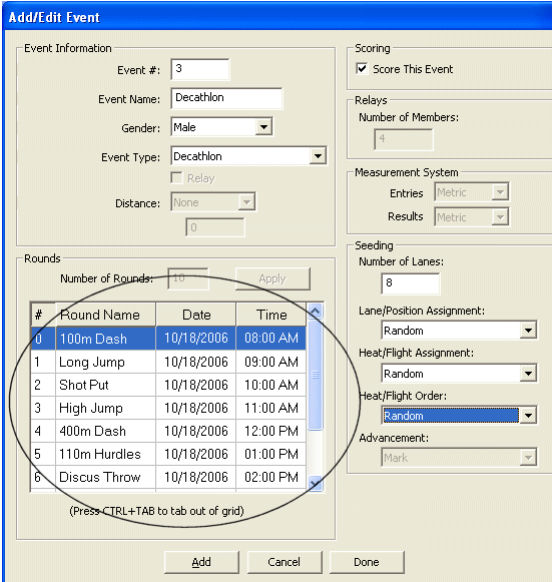
Heat/Flight Assignment: Serpentine

Heat/Flight Order: Worst To Best

Advancement: Time

Add Cancel Done

- 4 Click **Yes** when asked if you want to change the number of rounds. Each individual event belonging to the multi-event you are setting up appears in the **Rounds** box below.



Add/Edit Event

Event Information

Event #: 3

Event Name: Decathlon

Gender: Male

Event Type: Decathlon

Distance: None

Rounds

Number of Rounds: 6

#	Round Name	Date	Time
0	100m Dash	10/18/2006	08:00 AM
1	Long Jump	10/18/2006	09:00 AM
2	Shot Put	10/18/2006	10:00 AM
3	High Jump	10/18/2006	11:00 AM
4	400m Dash	10/18/2006	12:00 PM
5	110m Hurdles	10/18/2006	01:00 PM
6	Discus Throw	10/18/2006	02:00 PM

(Press CTRL+TAB to tab out of grid)

Scoring

Score This Event

Relays

Number of Members: 4

Measurement System

Entries: Metric

Results: Metric

Seeding

Number of Lanes: 8

Lane/Position Assignment: Random

Heat/Flight Assignment: Random

Heat/Flight Order: Random

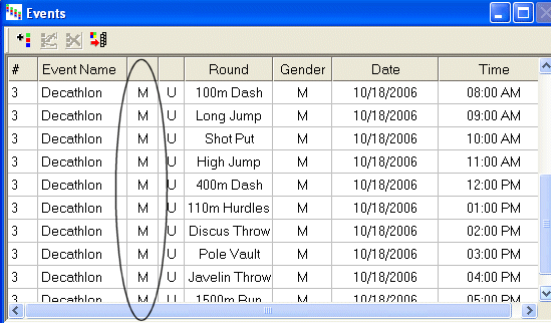
Advancement: Mark

Add Cancel Done

- 5 Then, click the **Add** button. The Add/Edit Event dialog remains displayed, but the Event #: field is incremented by one. LynxPad is ready for you to continue adding events.

- 6 When you are finished adding events, click **Done** to return to the LynxPad main screen. The new events you entered appear in the **Events** window.

Note: Multi-events displayed in the Events window are designated with an **M**, while an **I** indicates an individual event, and an **R** indicates a relay.



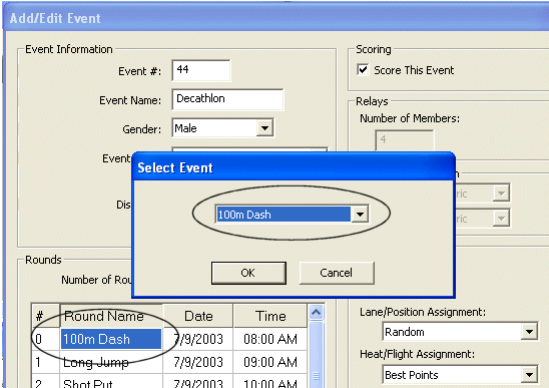
#	Event Name		Round	Gender	Date	Time
3	Decathlon	M U	100m Dash	M	10/18/2006	08:00 AM
3	Decathlon	M U	Long Jump	M	10/18/2006	09:00 AM
3	Decathlon	M U	Shot Put	M	10/18/2006	10:00 AM
3	Decathlon	M U	High Jump	M	10/18/2006	11:00 AM
3	Decathlon	M U	400m Dash	M	10/18/2006	12:00 PM
3	Decathlon	M U	110m Hurdles	M	10/18/2006	01:00 PM
3	Decathlon	M U	Discus Throw	M	10/18/2006	02:00 PM
3	Decathlon	M U	Pole Vault	M	10/18/2006	03:00 PM
3	Decathlon	M U	Javelin Throw	M	10/18/2006	04:00 PM
3	Decathlon	M I	1500m Run	M	10/18/2006	05:00 PM

Ability to customize a multi-event

LynxPad allows you to customize which events to include in your competition's multi-events.

➤ To do this:

- 1 After you have added a multi-event, double-click on it from the Events window. The **Add/Edit Event** dialog appears.
- 2 In the **Rounds** box, double-click on an event appearing in the listing. A **Select Event** pop-up appears, from which you can select a new event from the drop-down list.



Add/Edit Event

Event Information

Event #: 44

Event Name: Decathlon

Gender: Male

Event:

Discus

Relays

Number of Members:

Scoring

Score This Event

Rounds

Number of Rounds:

#	Round Name	Date	Time
0	100m Dash	7/9/2003	08:00 AM
1	Long Jump	7/9/2003	09:00 AM
2	Shot Put	7/9/2003	10:00 AM

Lane/Position Assignment: Random

Heat/Flight Assignment: Best Points

Select Event

100m Dash

OK Cancel

- 3 Click to select an event from the drop-down list and then click **OK**. The event name changes to the new event you just selected.
- 4 When you are finished customizing the event, click **Update** to return to the LynxPad main screen.

Ability to seed final event by points

With multi-events, LynxPad is set by default for a random lane assignment, heat assignment, and heat order for every event. However, LynxPad allows you to choose how to assign athletes to heats in the final event. You can choose to have athletes assigned to heats by **Best Points**, which puts the top scoring athletes together in a heat. After that, you can choose the heat order of **Low to High Points**, which schedules the heats containing the lowest point scorers first, or **High to Low Points**, which schedules the heats containing the highest point scorers first.

➤ To set up a multi-event's heat assignment criteria and heat order:

- 1 After you have added a multi-event to the competition, double-click on it from the Events window. The **Add/Edit Event** dialog appears.
- 2 Click to select the event you want to modify from the Round Names box. For example, you might want to modify the 1500 meter run for the men's decathlon, or the 800 meter run for the women's heptathlon.
- 3 Click to select **Best Points** from the **Heat/Flight Assignment** drop-down list.
- 4 Click to select a new **Heat/Flight Order** option from the drop-down list.
- 5 When you are finished making your modifications, click the **Update** button.

Add/Edit Event

Event Information

Event #: 44

Event Name: Decathlon

Gender: Male

Event Type: Decathlon

Relay

Distance: None

0

Scoring

Score This Event

Relays

Number of Members: 4

Measurement System

Entries: Metric

Results: Metric

Seeding

Number of Lanes: 8

Lane/Position Assignment: Random

Heat/Flight Assignment: Best Points

Heat/Flight Order: High To Low Points

Adv: Low To High Points

Rounds

Number of Rounds: 10 Apply

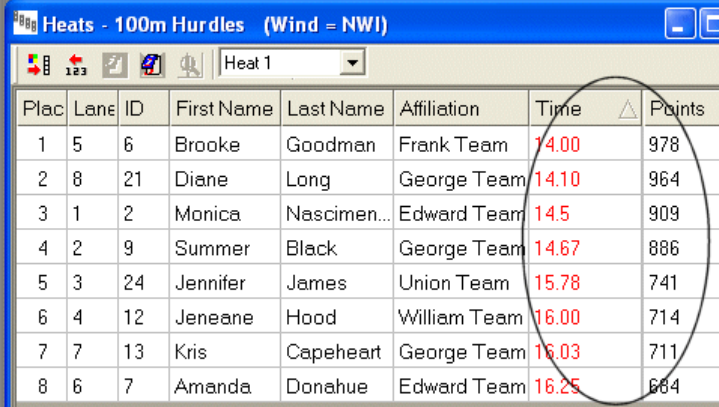
#	Round Name	Date	Time
3	High Jump	7/9/2003	11:00 AM
4	400m Dash	7/9/2003	12:00 PM
5	110m Hurdles	7/9/2003	01:00 PM
6	Discus Throw	7/9/2003	02:00 PM
7	Pole Vault	7/9/2003	03:00 PM
8	Javelin Throw	7/9/2003	04:00 PM
9	1500m Run	7/9/2003	05:00 PM

(Press CTRL+TAB to tab out of grid)

Update Cancel Done

On-screen point display for individual events

Just like with a regular, non-multi-event, you can view the results for an individual round within a multi-event by selecting it in the **Heats/Flights** window. The corresponding points for each athlete are automatically tallied and displayed in the points column of the window.



Plac	Lane	ID	First Name	Last Name	Affiliation	Time	Points
1	5	6	Brooke	Goodman	Frank Team	14.00	978
2	8	21	Diane	Long	George Team	14.10	964
3	1	2	Monica	Nascimen...	Edward Team	14.5	909
4	2	9	Summer	Black	George Team	14.67	886
5	3	24	Jennifer	James	Union Team	15.78	741
6	4	12	Jeneane	Hood	William Team	16.00	714
7	7	13	Kris	Capeheart	George Team	16.03	711
8	6	7	Amanda	Donahue	Edward Team	16.25	664

Printable results options

LynxPad allows you to print the individual rounds in a multi-event.

➤ **To do this:**

- 1 Click **Reports** from the Menu bar and select **Results...**. The **Print Results** dialog appears.
- 2 Click to select the round you want to print.
- 3 Configure your report display by making various selections on the lower part of the dialog, such as **Gender** and **Rounds**.
- 4 Then, you have several options:
 - Click **Preview** to view the report on your computer screen
 - Click **Ok** to send the report to the printer, or
 - Check the **Export Data** box to print the report to an alternative format, such as HTML or PDF.

Printable multi-events results summary

You can print a multi-events results summary by following these steps:

- 1 Click **Reports** from the Menu bar.
- 2 Click **Multi-Events Results Summary...**. The **Print Multi-Events Results Summary** dialog appears.

- Click to select the event or events for which you want to print a summary, and then click either **Preview** to view the report on your computer screen, or **Ok** to send the report to a printer.

Reminder: You can also export this data to another format by checking the **Export Data** box.

10/23/2006
10:19:08PM

Sample Data

7/09/2003

Multi-Events Results Summary

Heptathlon - Women

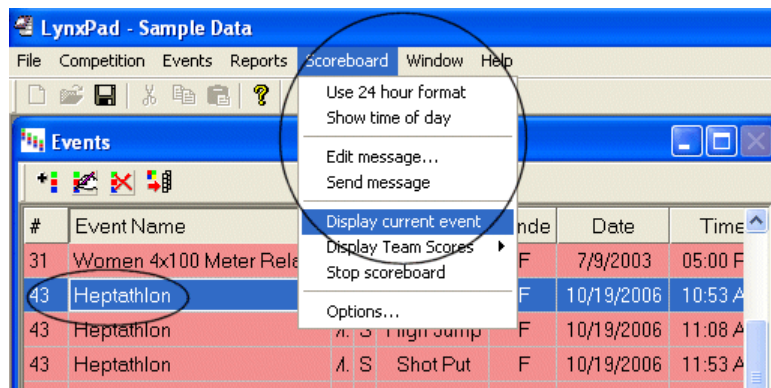
	Points	100H	HJ	SP	200	LJ	JT	800
1 Liz Roehrig Minnesota Team Points: 10	5472	14.3 w: -0.4	1.71m 5'07.25"	13.08m 42'11.00"	24.8 w: -0.5	5.95m 19'06.25"	31.06m 101'11.00"	2:29.9
2 Bettie Wade Michigan Team Points: 8	5354	14.3 w: +0.4	1.68m 5'06.00"	10.96m 35'11.50"	25.4 w: -0.5	6.04m 19'09.75"	34.55m 113'04.50"	2:28.9
3 Lindsey Biel Wisconsin Team Points: 6	4980	14.4 w: -0.4	1.59m 5'02.50"	10.64m 34'11.00"	26.0 w: -0.4	5.34m 17'06.25"	33.01m 108'04.00"	2:24.5
4 Lindsey Singleton Purdue Team Points: 5	4898	14.7 w: +0.2	1.62m 5'03.75"	10.26m 33'08.00"	25.5 w: -0.4	5.27m 17'03.50"	30.83m 101'02.00"	2:27.4
5 Maggie Jaunich Minnesota Team Points: 4	4789	15.6 w: +0.4	1.68m 5'06.00"	10.54m 34'07.00"	26.5 w: -0.4	5.09m 16'08.50"	36.34m 119'03.00"	2:31.2
6 Etienne Chaplin Michigan State Team Points: 3	4697	14.9 w: +0.4	1.53m 5'00.25"	10.75m 35'03.25"	25.9 w: -0.5	5.59m 18'03.75"	31.57m 103'07.25"	2:41.2
7 Beth Vinckler Michigan		14.8 w: +0.2	1.50m 4'11.00"	10.17m 33'04.50"	26.0 w: -0.5	5.16m 16'11.25"	27.69m 90'10.50"	2:28.1

Ability to send multi-event points to a scoreboard

LynxPad now allows you to send multi-event points to a scoreboard.

➤ **To do this:**

- Click to select the multi-event you want to display from the Events window.
- Click **Scoreboard** from the Menu bar, and then select **Display Current Event**.

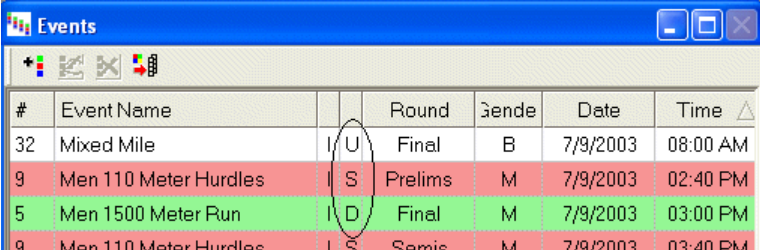


New general features

Enhanced event view

Events listed in the LynxPad Events window are now color-coded and contain a new letter column indicating:

- **U** - (white) the event is *unseeded*
- **S** - (red) the event is *seeded*, or
- **D** - (green) the event *done/scored*.



#	Event Name		Round	Gender	Date	Time
32	Mixed Mile	U	Final	B	7/9/2003	08:00 AM
9	Men 110 Meter Hurdles	S	Prelims	M	7/9/2003	02:40 PM
5	Men 1500 Meter Run	D	Final	M	7/9/2003	03:00 PM
9	Men 110 Meter Hurdles	S	Semis	M	7/9/2003	03:40 PM

Important: After either loading or hand-entering results into the Heats or Flights window in LynxPad, each athlete or team must have a place or status value in the Place column. Otherwise, the event will incorrectly appear red, rather than green, in the Events window, indicating that it is *seeded* rather than *done/scored*.

Ability to set up each round of a multi-round event uniquely

When you have an event with more than one round, you can now set the **Lane/Position Assignment**, **Heat/Flight Assignment**, **Heat/Flight Order**, and **Advancement** criteria uniquely for each round of the event.

➤ **To do this:**

- 1 Double-click the event from the Events window to access the **Add/Edit Event** dialog.

- 2 Click to highlight a round in the **Rounds** box on the screen.
- 3 From the **Lane/Position Assignment**, **Heat/Flight Assignment**, **Heat/Flight Order**, and **Advancement** drop-down lists, select the assignment criteria you want to use for this round.

Add/Edit Event

Event Information

Event #: 1

Event Name: 100 Meters

Gender: Female

Event Type: Track

Distance: 100

Relay:

Scoring

Score This Event

Relays

Number of Members: 4

Measurement System

Entries: Metric

Results: Metric

Seeding

Number of Lanes: 8

Lane/Position Assignment: Standard Lanes

Heat/Flight Assignment: Timed Finals

Heat/Flight Order: Random

Advancement: Time

Rounds

Number of Rounds: 3

#	Round Name	Date	Time
1	Prelims	10/18/2006	08:00 AM
2	Semis	10/18/2006	09:00 AM
3	Final	10/18/2006	10:00 AM

(Press CTRL+TAB to tab out of grid)



Update Cancel Done

- 4 When you click to select a different round, you can select different criteria from Lane/Position Assignment, Heat/Flight Assignment, Heat/Flight Order, and Advancement drop-down lists, if you want.
- 5 When finished, click the **Update** button.

Relay support for individual team members

LynxPad now allows you to name individual members when adding a relay team.

➤ **To do this:**

- 1 Make sure you have a relay event already added to your competition. If not, click  and complete the fields in the Add/Edit Event dialog.
- 2 After you have added a relay event, click to activate the **Athletes/Relays** window.
- 3 *Either* click  *or* select **Athletes/Relays | Add Relay...** from the Menu bar. The Add/Edit Relay dialog appears.
- 4 Click to select a relay team from the **Affiliation** drop-down list. (Optional/new feature: LynxPad now allows you to add an affiliation from this screen by clicking the **New...** button.)
- 5 In the **Designation** field, type a relay team indicator such as "A Team," or "B Team," etc.

- 6 (Optional) Type a value in the **License** field.
- 7 Select a **Gender** from the drop-down list.
- 8 Select the event you entered earlier from the **Event** drop-down list.
- 9 (Optional) Type to enter a **Seed Time** into the corresponding field.
- 10 Select each relay team member from the **Athlete Name** drop-down list.
- 11 When you are finished, the completed screen resembles the following image.

Add/Edit Relay

ID:

Affiliation:

Designation:

License:

Gender:

Event Name	Seed Time
<input type="text" value="4 - Mile Relay"/>	<input type="text" value="4:31.24"/>

Relay Members:

Len	Athlete Name
1	<input type="text" value="4, Harrington, Brenda"/>
2	<input type="text" value="12, Hood, Jeneane"/>
3	<input type="text" value="19, Pinnow, Adora"/>
4	<input type="text" value="5, Repoff, Amy"/>

(Press CTRL+TAB to tab out of grid)

- 12 Click **Add**. When you are finished adding relay teams, click **Done** to return to the LynxPad main screen.

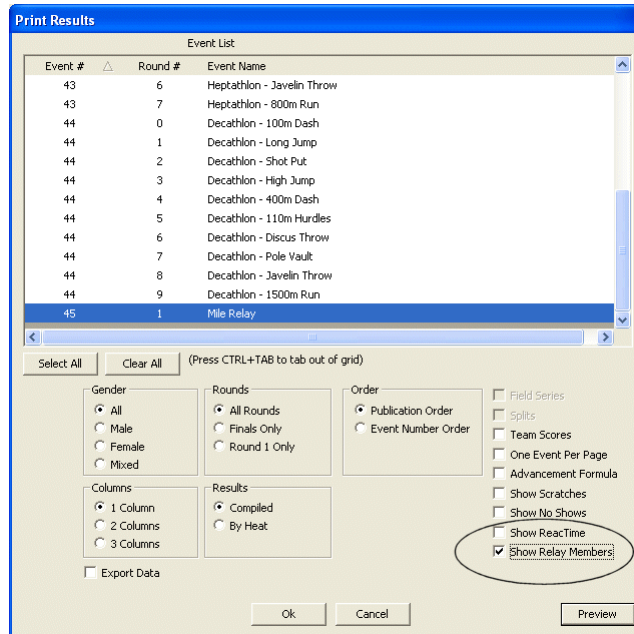
Ability to print individual relay members in results reports

Now when you print relay results, you can choose to include the names of individual relay team members.

➤ **To do this:**

- 1 After loading the results for a completed relay, click to select the relay event you want to print the results for from the Events window.
- 2 Click **Reports** from the Menu bar and then select **Results...**. The **Print Reports** dialog appears.

- 3 Click to make the selections you want, depending on the information you want to include in the report.
- 4 Click to check the **Show Relay Members** box in the lower right corner of the dialog.



- 5 Either click **Ok** (to send the report to the printer), **Print Preview**, or **Export Data**, depending on the disposition of the report. The names of the relay team members appear in the results report.

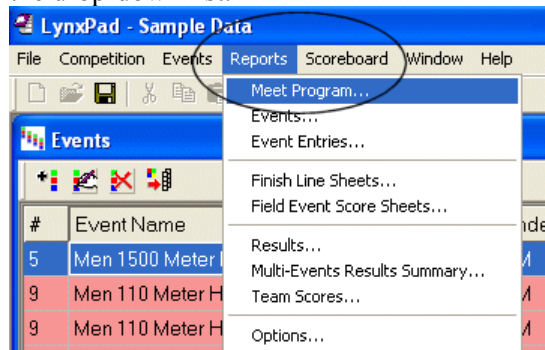
New report features

More options for Meet Programs and Event Lists reports

Now, when you print either a Meet Program or Event List report, by default the date and time are included on the report.

➤ *To print a Meet Program:*

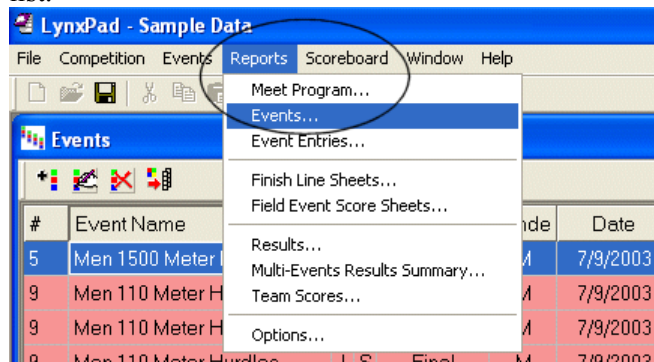
- 1 Click **Reports** from the Menu bar and then select **Meet Program...** from the drop-down list.



- 2 When the **Print Meet Program** dialog appears, finish making the selections provided on the dialog. Click to *uncheck* the **Show Date** and **Show Time** boxes if you do *not* want that information included on the report. Then, click **Ok** to send the report to the printer.

➤ *To print an Event List:*

- 1 Click **Reports** from the Menu bar and select **Events...** from the drop-down list.



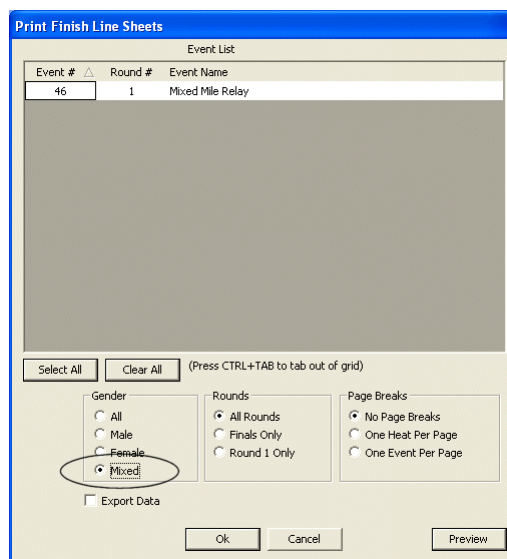
- 2 When the **Print Events** dialog appears, finish making the selections provided on the dialog. Click to *uncheck* the **Show Date** and **Show Time** boxes if you do *not* want that information included on the report. Then, click **Ok** to send the report to the printer.

Ability to print mixed-gender events

You can now print a mixed-gender event just like you would print any other event report.

➤ **To print a report:**

- 1 Click **Reports** from the Menu bar and then select the type of report you want to print from the drop-down list.
- 2 When the **Print [Report Name]** dialog appears, click the **Mixed** radio button in the Gender box.



- 3 Complete making your selections on the dialog and then click **Ok** to send the report to the printer.

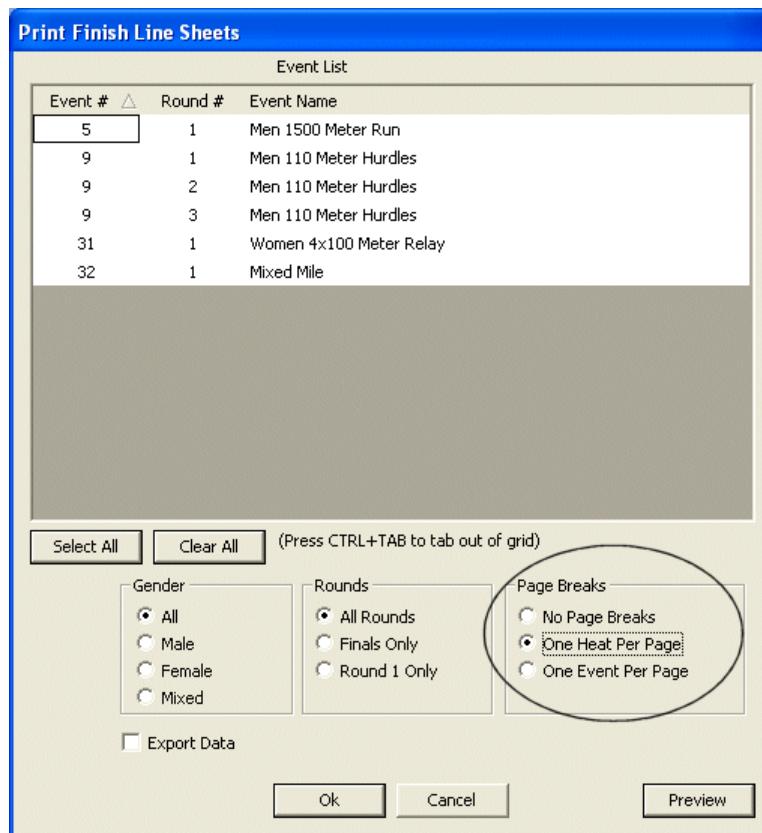
Finish Line Sheets report enhancements

You can now print one heat per page or one event per page when you create a Finish Line Sheets report.

Also, note that Finish Line Sheets reports are now printed with a line for the official's signature and title.

➤ **To print a Finish Line Sheets report:**

- 1 Click **Reports** from the Menu bar and then select **Finish Line Sheets...**. The **Print Finish Line Sheets** dialog appears.
- 2 From the **Page Breaks** section, click to select either the **One Heat Per Page** or **One Event Per Page** radio button.



- 3 Then, click **Ok** to send the report to the printer.