







## IdentiLynx PRO (XS and XR) – Full Frame Video Capture Quick Start Guide

Verify that your IdentiLynx – Full Frame Video system contains the components pictured here. If not, or if you need help, call: USA 978 556 9780

Item	Description	ID	Item	Description	ID
	IdentiLynx Camera (shown with lens mounted)	IdentiLynx PRO XS or IdentiLynx PRO XR		Power Injector for Power Over Ethernet	IDL-PoE
	Protective Case	CP102		Power Over Ethernet Power Supply Connector	(Included with IDL-PoE)
	10' (3 meter) Ethernet Cable	C10BT-10		100' (33 meter) Ethernet Cable	C10BT-100

### Items not included

- Computer (laptop recommended) running Microsoft Windows. Your computer needs: one available serial port, or USB port, one available Ethernet port (Recommended 100 mbs network card or higher), and a DVD/CD drive.
- (Recommended) Gigabyte Hub/Switch
- UPS Battery Backup

FinishLynx - [Girls 3200 Meter Run High School (57-1-1)]

File Edit Event Image Results Scoreboard LapTime Window Help

(no starts) (no capturable events) 0.0

Camera	Rate	Density	Mode	Gain	Orientati
Girls 3200 Meter Run High School			57	1	1
Start	15:34:30.25				
Wind			100M (0.0,10.0)		
LapTime	0	1			
Finish					
Camera 1	1000	908	Zoom 150	77	Right
Camera 2	10	1024	Zoom 100	1	Left
Results	3200				

Place	Id	Lane	First Name	Last Name	Affiliation	License	Time	Delta Time
	254	1	Britany	MacArthur	Nova Scotia			
	253	2	Tristan	Langley	Nova Scotia			
	248	3	Ashley	Chisholm	Nova Scotia			
	335	4	Emily	Bakaj	Spring Valley			
	349	5	Annie	Niehaus	Spring Valley			
	864	7	Lataveia	Fowler	Stephenson			
	883	8	Chicka	Nwodidi	Stephenson			
	869	6	Jazime	James	Stephenson			

1:22.12 | 2 | Camera 1

1:22.12 | 200 | Camera 2

## Introduction

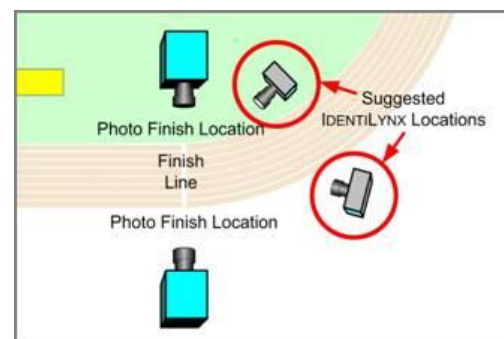
In this quick start guide, you will learn how to set up and configure the IdentiLynx camera with your FinishLynx Timing system and playback full frame video captured at the finish line.

**IMPORTANT NOTE: Lynx recommends a Gigabyte hub/switch and Gigabyte network card as a minimum when adding the IdentiLynx camera to your timing system.**

## Step 1: Install the Latest FinishLynx Software

- IdentiLynx requires the latest version of FinishLynx
- Open FinishLynx on your computer – go to [Help | About](#) and write down your FinishLynx Serial Number if you do not have it stored somewhere. Also record the serial numbers for any FinishLynx Software Plug-Ins
- If accessible, insert the supplied Lynx Flash Drive into your computer's USB port and install FinishLynx. Or download the latest version from the website: [www.finishlynx.com/product/software/finishlynx-results-software/](http://www.finishlynx.com/product/software/finishlynx-results-software/)
- Enter the serial number found on your Lynx flash drive or from your [Help|About](#) information.
- Open FinishLynx, click [Help|About](#) and verify a serial number is listed next to FinishLynx (this verifies installation was successful)

## Step 2: Set-Up IdentiLynx Camera



- Place the camera on the tripod, about chest high and in a safe location aimed at the finish line facing in the direction of the oncoming runners.
- Plug the Power over Ethernet power supply into the power source or UPS battery backup.
- Connect the first Ethernet cable (10') from the Hub/Switch to the "In" port of the IdentiLynx power supply.
- Connect a second Ethernet cable (100') to the "Out" port on the IdentiLynx power supply
- Do not connect the other end of the second Ethernet cable to the RG45 port on the back of the IdentiLynx Camera until FinishLynx is ready to boot the cameras.

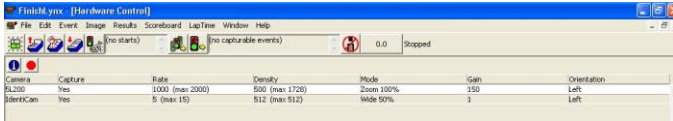
**NOTE:** The IdentiLynx camera gets Power over Ethernet (POE)

### Step 3: Boot Cameras

- Open up the FinishLynx program.
- Power on the FinishLynx cameras first, before the IdentiLynx camera, a single camera at a time.**
- After **ALL** your regular FinishLynx cameras have started and appeared in the camera listing in the FinishLynx Hardware Control window, plug in the Ethernet cable from the “Connect” port on the power injector to the RG45 port on the back of the IdentiLynx camera.
- Verify that the IdentiLynx camera boots with the default settings:

**XS: Rate - 5 fps, Density - 480, and Mode - 100%**

**XR: Rate - 5 fps, Density - 720, and Mode - 100%**

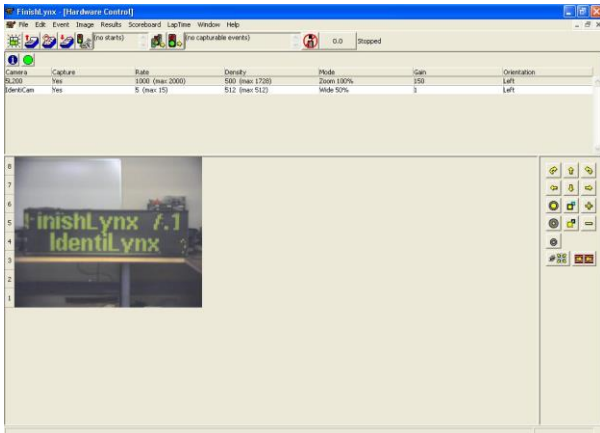


**NOTE:** If the IdentiLynx camera goes off-line due to loss of power or network connection the camera name does not turn **RED** as the FinishLynx camera. The software does not do a check to see if the IdentiLynx camera is connected.

**NOTE:** Booting the IdentiLynx camera at the end of the order will eliminate any interruption in camera communication if you turn off or lose connection with the IdentiLynx camera at some point and require re-booting the FinishLynx cameras (IP order of assigning).

### Step 4: Align IdentiLynx Camera

The IdentiLynx camera is a Full Frame Video so the image during alignment mode will be a normal two dimensional video in the Image Zone.

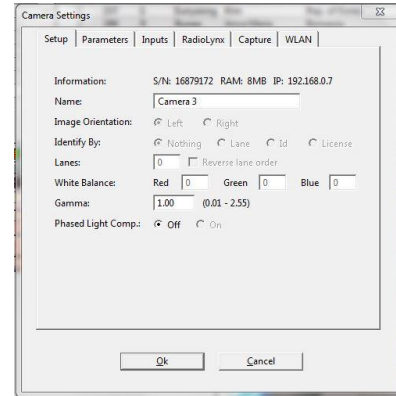


- Follow Steps 1, 2, and 3 above.
- Confirm that the IdentiLynx camera has booted-appears in the listing in the Hardware Control window.
- Have someone stand on the finish line to determine the focus point.
- Select the IdentiLynx camera in the Hardware Control window and click on the **Red Stop** sign to put the IdentiLynx camera into Alignment mode
- Adjust the IdentiLynx camera to the desired zoom and focus to capture video at the Finish Line.

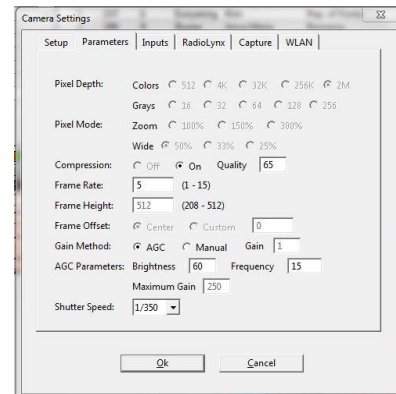
### Step 5: Camera Settings

**NOTE:** Only the Setup, Parameters and Capture tabs will apply to settings for the IdentiLynx camera. The other settings are grayed out as they do not apply to the IdentiLynx functions.

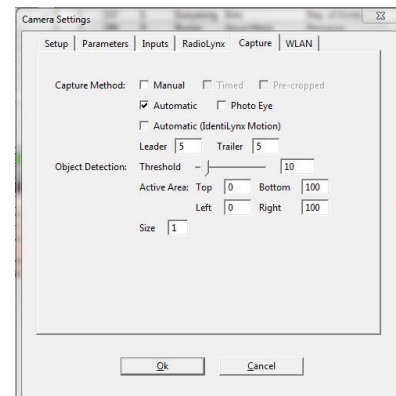
- Click on the Camera Settings Icon (blue circle with white “I”)
- Click on the Setup Tab and Name the camera based on location or function



- Click on the Parameters tab and set the Frame Rate and Density to your desired need. If you see any problems with image capture, lower the frame rate, and/or return the Pixel Mode to Wide 50%.



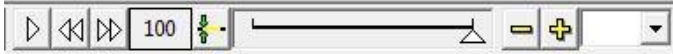
- Click on the Capture Tab and make sure Manual is selected. Make sure that the Capture Button is configured correctly in [File|Options|General](#) if you are using ACM on the FinishLynx cameras



- In [File | Options | Image](#), make sure that Time Tracking is set to “All Cameras”

## Step 6: IdentiLynx Image Tool

- a) Open a New Blank Event in FinishLynx
- b) Get a start for the system and have someone run through the Finish Line as you capture (All Cameras)
- c) Click on the “+” and “-“ icons on the Image Tool Bar and zoom in and out of the image
- d) Click on the Full Screen icon to show the image full screen
- e) The Cropping tools and Find Next Object are not applicable to the IdentiLynx image
- f) Right click and hold in the IdentiLynx image and drag to draw a small box and choose enhance from the menu when the mouse is released. Click on the Restore Image icon to bring it back to the original state



- g) Click on the Play icon and see the images change (you should see the time advance to the left of the play icon). Click it again to stop playback
- h) Click on the Forward or Reverse icons to move one frame at a time in either direction (you should see the time advance with each frame)
- i) Hitting the rewind button at full speed forward playback goes to ½ speed playback. Hitting it again goes to ½ speed reverse playback, and again goes to full speed reverse. It works the same going forward in playback.
- j) You can control the number of “slow modes” there are with the Hidden Setting \Event\Image\FrameMaxSlow. This defaults to 2, which means you get half speed. If set to 1 you get no “slow modes”, if set to 4 you would get ½ speed and ¼ speed. There is also \Event\Image\FrameMaxFast, which controls how fast. It defaults to 16, giving up to 16 times playback.
- k) Clicking the Play button in slow or fast modes brings the play back to full speed and clicking it again will stop playback.
- l) Images can be printed from the Image Tool Bar or they can be cropped and saved as a .jpg, similar to FinishLynx images.

**NOTE:** The Play speeds are not displayed in the Image Tool Bar.

## Step 7: Time Tracking With IdentiLynx

**NOTE:** The Red hash line does not appear on the IdentiLynx image unless you click on the image frame. Time can NOT be read from the IdentiLynx image

- a) Using the same Blank Event, investigate the time tracking between the FinishLynx camera and IdentiLynx.
- b) Click on a competitor in the Finish Lynx image and the IdentiLynx image should jump to that Frame (time reference) in the sequence
- c) Click on the Play button for the IdentiLynx images and then click in the FinishLynx image. The IdentiLynx image will jump to that location and continue to play from that point forward.

## Step 8: Remote Focus Fine Tuning

The remote focus adjustment on the IdentiLynx PRO cameras is for FINE TUNING ONLY. You will need to get the image approximately in focus manually, and then use the controls in the Hardware Control window to bring the image into precise focus.

Major adjustments in focus are NOT possible from within the FinishLynx software.

**Note (a):** When adding IdentiLynx PRO cameras to your network, be sure to monitor Ethernet traffic and watch for congestion. Add one camera at a time, and increase the resolution, or frame rate in increments. We recommend the use of a Gigabyte Network Switch. Use the same methodology when adding a second IdentiLynx camera to your FinishLynx network. From a results production standpoint, it is seldom necessary to go over 10fps in Cross Country or Road Races

**NOTE (b):** The Play speeds are not displayed in the image tool bar. If you “Ctrl click” the buttons you’ll go to the first or last frame. If you “Shift click” the play button, the image playback will loop back to the beginning when the end is reached.

This completes the *FinishLynx “IDENTILYNX PRO” Full Frame Video Capture System - Quick Start Guide.*

