

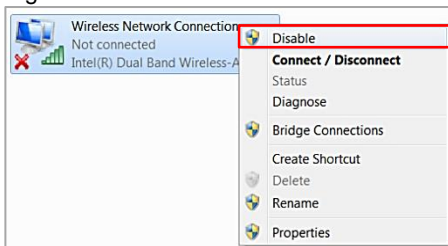
# IdentiLynx Full-Frame Video Camera Troubleshooting Guide

## Setting Up Your IdentiLynx

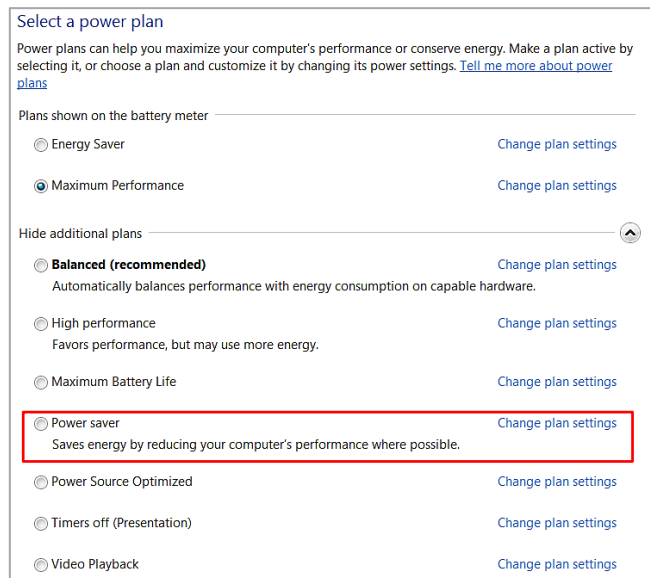
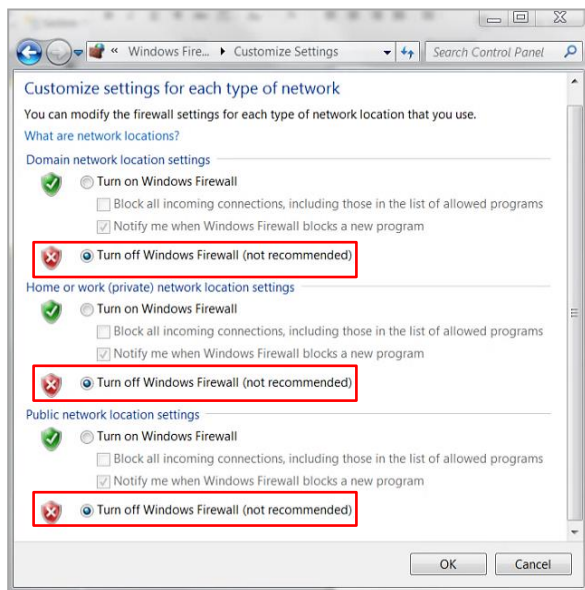
**Note:** Please see the IdentiLynx Quick Start Guide for full instructions on setting up your IdentiLynx camera. Contact technical support with any questions you may have: [support@finishlynx.com](mailto:support@finishlynx.com)

### Computer Setup and Networking Best Practices

1. Make sure you have the correct IP address.
  - a. Set the static IP (192.168.0.5).
  - b. The computer will assign the camera an IP address once it's connected.
2. Disable Wireless.
  - a. First, navigate to the **Control Panel**.
  - b. Open **Network and Sharing Center** then select **Change Adapter Settings**.
  - c. Right-click **Wireless Network** and click **Disable**.
4. Disable Power Saving function.
  - a. Back on the **Control Panel** main screen, click **System and Security**.
  - b. Select **Power Options** and make sure it's set to **Maximum Performance** and that the **Power Saver** option is *not* selected.



3. Disable Firewalls.
  - a. In the **Control Panel** select **Windows Firewall**.
  - b. Click **Turn Windows Firewall on or off**.
  - c. Turn off the firewall for each network type.



## Troubleshooting Your IdentiLynx

### Camera is Not Connecting to FinishLynx

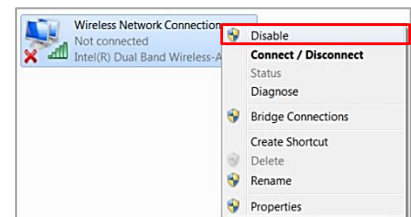
If you've followed the above steps but your IdentiLynx camera is not connecting to FinishLynx, you can follow these next steps. Next, make sure your connections are good and all of your equipment is working perfectly. **Double-check the Ethernet cables.**

1. Switch out the Ethernet cables (these cables can go bad, especially when used often).
2. Switch the Ports on the PoE switch.
3. Plug directly into the computer.

After doing this, you can narrow down the possible problems that might be causing connectivity issues.

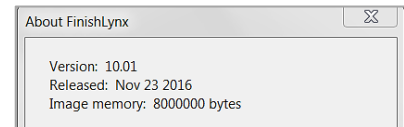
### Error Codes and Solutions

**Error 129**      Disable Wireless (See **Step 2** under **Computer Setup**  
Failed Contact Address      **and Networking** above)



**Error 201**      Make sure you are running the correct version of  
Invalid Version      FinishLynx. To see what version you have, **Open FinishLynx**  
then click **Help | About...**

Download the latest version of FinishLynx on our website:  
[www.finishlynx.com/product/software/finishlynx-results-software/](http://www.finishlynx.com/product/software/finishlynx-results-software/)



**Error 202**      Check and make sure the IP address is correct.  
Bad Set IP Address      Right-click the FinishLynx icon, then select **Run as Administrator**.

