

IdentiLynx PLUS Series:

XR+ Extended Resolution

The **IdentiLynx XR+** is an Ethernet-based, full-frame digital video camera that integrates with EtherLynx photo-finish cameras to produce time-stamped finish line videos. **IdentiLynx** video cameras provide high-resolution, front-facing video that is time-synchronized inside FinishLynx to quickly and accurately identify competitors at the finish line.



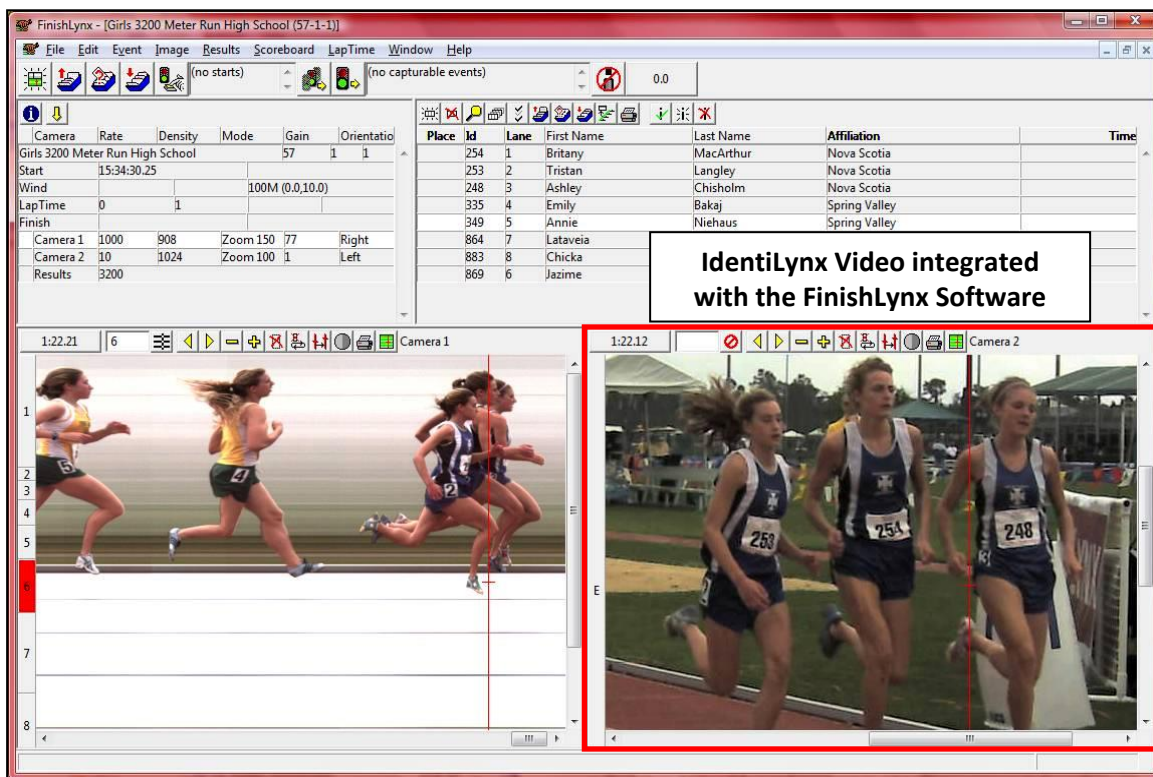
The **IdentiLynx XR+** offers many advantages over the standard IdentiLynx, including higher image resolution, variable frame rates, and more capture modes. The standard IdentiLynx camera maxes out at 1280 x 720 pixels, while the IdentiLynx XR+ captures up to **1920 x 1080** at 30 fps or **2592 x 1944** at 15 fps. It also offers several improvements over past IdentiLynx models. The camera includes a P-Iris motorized lens so the zoom and focus can be adjusted remotely within the FinishLynx software. It also has a sturdy plastic housing that protects the lens and rear connections from moisture and damage. Set up the IdentiLynx XR+ at your finish line and start capturing high-definition, time-stamped videos at all your races.

Compare the IdentiLynx XR+ Camera with the Standard IdentiLynx

- The IdentiLynx XR+ offers several improvements over the standard IdentiLynx, adding increased image resolution, variable frame rates, and a remote control lens.
- Nine different capture modes allow you to optimize the capture rate/resolution for your event.
- Adjust the camera's remote control focus and zoom from within the FinishLynx Software.
- The sturdy, weatherproof housing protects the lens and connections from damage.

Camera Model	IdentiLynx XR+	IdentiLynx+
Max Resolution	2592 x 1944 @ 15 fps	1280 x 720 @ 30 fps
Max Frame Rate	30 fps @ 1920 x 1080	30 fps (1280 x 720)
Resolution 1	2592 x 1944 @ 15 fps	n/a
Resolution 2	2560 x 1440 @ 15fps	n/a
Resolution 3	2048 x 1536 @ 20 fps	n/a
Resolution 4	1920 x 1080 @ 30 fps	n/a
Resolution 5	1600 x 1200 @ 20 fps	n/a
Resolution 6	1280 x 960 @ 20 fps	n/a
Resolution 7	1280 x 720 @ 30 fps	1280 x 720 @ 30 fps
Resolution 8	720 x 480 @ 30 fps	720 x 480 @ 30 fps
Resolution 9	320 x 240 @ 30 fps	320 x 240 @ 30 fps

Athlete Identification Has Never Been Easier



IdentiLynx XR+ Hardware Specifications

Shutter Speed	Automatic
JPEG image quality	Up to 5 megapixels
Gain	Automatic
Lens	2.8-8.5mm, f/1.2, Motorized Zoom Lens
Power Supply	Power-Over-Ethernet (PoE 802.3af); 12VDC; 24 VAC
Dimensions	5.07" (L) x 2.72" (W) x 2.76" (H)
Weight	0.4 lb (0.165 kg)
Construction	Plastic and aluminum

Integration with FinishLynx Timing Software

- Remotely adjust the camera's zoom and focus within the FinishLynx software to optimize image quality.
- IdentiLynx video is automatically time-synced with the photo-finish image – clicking on a finish line capture will instantly show the corresponding front-facing video frame.
- IdentiLynx videos can be advanced and rewind frame-by-frame to ensure timers can find frames with a clear bib/hip number. Videos can also be reviewed in real time while the race is still underway.
- Overlay athlete names, times, and affiliations on the video frames from inside FinishLynx.
- IdentiLynx cameras can be used with the Automatic Capture Mode (ACM) plug-in.
- FinishLynx enables the standard EtherLynx camera features to be used with IdentiLynx cameras, including zoom, automatic scrolling, gamma, brightness, and contrast adjustment.
- IdentiLynx video images are stored on the computer as individual images and can be printed directly from the FinishLynx software, either with or without included results.
- IdentiLynx videos can be manually cropped, viewed in forward or reverse, viewed at different speeds, exported to AVI format, and uploaded to the internet if desired.