

## Transferring Start Lists and Results between LynxPad™ and FinishLynx®

To transfer start lists and results between the LynxPad™ and FinishLynx® applications, you must configure the FinishLynx Database directories to match the LynxPad *competition directory*, whether you are using one computer or networking two computers.

### Before You Begin

Set aside at least 15 minutes to complete these instructions.

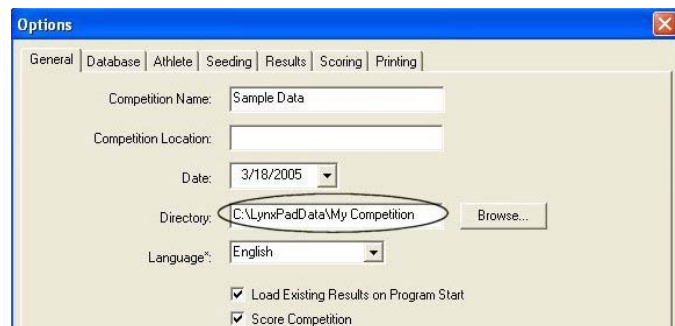
Note that this quick start guide assumes:

- you are running Microsoft Windows XP.
- you have LynxPad and FinishLynx installed on your computer(s).
- you have created a competition in LynxPad with seeded events.

### Configuring LynxPad and FinishLynx on One Computer

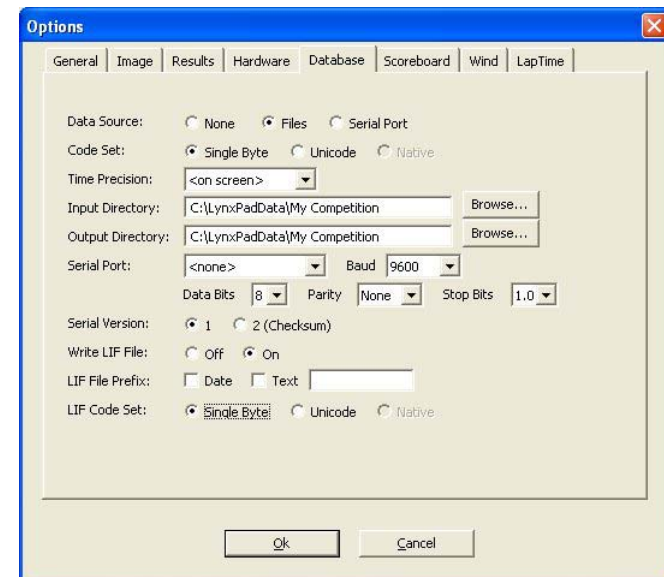
#### ➤ Set up LynxPad

1. Run LynxPad.
2. Open a competition in LynxPad.
3. Click **File** from the Menu bar and select **Options....** The **Options** dialog appears.
4. Note the LynxPad *competition directory* listed in the **Directory:** text field, and then click **Ok**. The LynxPad *competition directory* stores the files used by FinishLynx to load start lists.



#### ➤ Set up FinishLynx

1. Run FinishLynx.
2. Click **File** from the Menu bar and select **Options....** The **Options** dialog appears.
3. Click the **Database** tab.
4. On the **Input Directory:** line, click the **Browse...** button and navigate to the LynxPad *competition directory*. Then, click **OK**.
5. On the **Output Directory:** line, click the **Browse...** button and navigate to the LynxPad *competition directory*. Then, click **OK**.
6. Now, make sure the following selections on the Database dialog are made:
  - **Data Source:** select **Files**, and
  - **Write LIF File:** select **On**.



7. Click **Ok**.

Continue to Side 4, *Transferring Data between LynxPad and FinishLynx*.

## Configuring LynxPad and FinishLynx on Two Networked Computers

This section assumes the LynxPad and FinishLynx computers are connected with a hub and network cables.

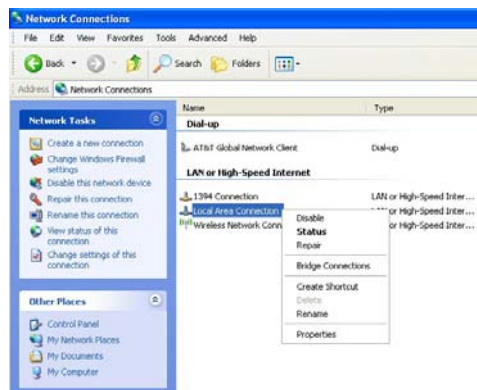
The steps in this section include:

- Set an IP address on both computers
- Determine the LynxPad *competition directory*
- Share the *competition directory* on the LynxPad computer
- Map a network drive on the FinishLynx computer
- Configure the FinishLynx database directories

### ➤ Set an IP Address on both computers

Follow these steps on both the LynxPad and the FinishLynx computers.

1. Click the Microsoft Windows Start button.
2. Click Control Panel and then double-click Network Connections. The Network Connections dialog appears.
3. Right-click on Local Area Connection and click Properties from the drop-down list.



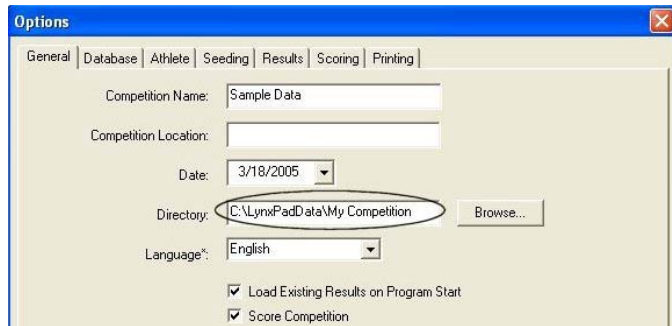
4. The Local Area Connection Properties dialog appears. Click to highlight Internet Protocol (TCP/IP) and then click Properties.



5. The Internet Protocol (TCP/IP) Properties dialog appears. Select: Use the following IP address.
6. On the IP address: line, type the following IP address:
  - LynxPad computer: 192.168.0.90
  - FinishLynx computer: 192.168.0.5
7. On the Subnet mask: line, type: 255.255.255.0.
8. Leave the Default gateway: line blank.
9. Click OK twice.

### ➤ Determine the LynxPad competition directory

1. Run LynxPad.
2. Open a competition in LynxPad.
3. Click File from the Menu bar and select Options.... The Options dialog appears.
4. Note the LynxPad *competition directory* listed in the Directory: text field, and then click Ok. The LynxPad *competition directory* stores the files used by FinishLynx to load start lists.



### ➤ Share the LynxPad computer

1. On the LynxPad computer, *either* click the Microsoft Windows Start button and then click **My Computer**, *or* double-click the **My Computer** icon on your computer's desktop screen.
2. Right-click the **Local Disk (C:)** icon and select **Sharing and Security...**
  - If you are logged onto a *workgroup*, or if you are running Microsoft Windows XP Home Edition, click the **Share this folder on the network** and **Allow network users to change my files** checkboxes and then click **OK**.
  - If you are logged onto a *domain*, select **Share this folder**, set the permissions to **Full control**, and then **OK**.

You have now shared the files and folders on the LynxPad computer.

### ➤ Map a network drive on the FinishLynx computer

1. On the FinishLynx computer, click the Microsoft Windows **Start** button and then click **Search**. The **Search Results** dialog appears.
2. Under **What do you want to search for?** on the left pane, click **Computers or people**.
3. Click **A computer on the network**.
4. In the **Computer name:** text field, type the IP address of the LynxPad computer; **192.168.0.90**, and then click **Search**.
5. After Microsoft Windows finds the LynxPad computer, double-click the IP address on the right pane.
6. Right-click the **C** folder and select **Map Network Drive...**. The **Map Network Drive** dialog appears.
7. Select a drive letter, for example, **Z:**.



8. The drive letter you selected allows you to access the LynxPad computer from the FinishLynx computer. Click **Finish**.

### ➤ Configure the FinishLynx database directories

1. Run FinishLynx.
2. Click **File** from the Menu bar and select **Options...**. The **Options** dialog appears.
3. Click the **Database** tab.
4. Make sure the following selections are made:
  - **Data source:** select **Files**
  - **Input Directory:** click the **Browse...** button and navigate to the LynxPad *competition directory* (for example, **Z:\LynxPadData\My Competition**)
  - **Output Directory:** click the **Browse...** button and navigate to the LynxPad *competition directory* (for example, **Z:\LynxPadData\My Competition**)
  - **Write LIF File:** Select **On**


Now you are ready to transfer start lists and results between the LynxPad and FinishLynx computers.

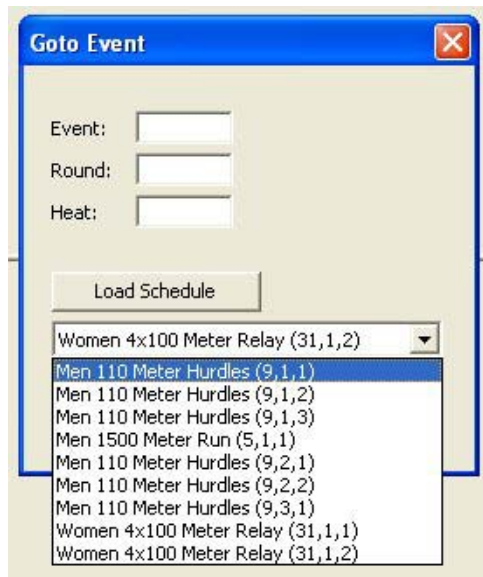
## Transferring Data between LynxPad and FinishLynx

After configuring the *competition directory* in LynxPad and FinishLynx whether on one computer or two networked computers, you are ready to:

- Import a start list into FinishLynx and
- Import results into LynxPad.

### ➤ Import a start list into FinishLynx

1. In FinishLynx, click **File** from the Menu bar and either select **Goto Event** or click . The **Goto Event** dialog appears.
2. Click the **Load Schedule** button.
3. Click the drop-down arrow in the text field below the **Load Schedule** button to view the start lists available for FinishLynx to load.




4. Click to select an event from the list, and then click **Ok**. A new event is created in FinishLynx. The start list appears in the FinishLynx Results Zone.

Place	Lane	First Name	Last Name	Affiliation	License	Time	Delta Time
1	4	Michael	Thomas	Arkansas		9.89	
2	2	Vytautas	Kancleris	Northern Arizona		10.00	
3	8	Eddie	Jackson	Arkansas		10.01	
4	6	Chris	Stokes	George Mason		10.13	
5	3	Ron	Bramlett	Alabama		10.23	
6	5	Antwon	Hicks	Mississippi		10.45	
7	7	Jabari	Greer	Tennessee		10.99	

5. After capturing and evaluating the event, click **File** from the Menu bar and select **Save**. The **Save As** dialog appears.
6. Click **Save** again. The event results are now ready for import into LynxPad.

### ➤ Import results into LynxPad

1. In the LynxPad Events window, click to select the event you just evaluated in FinishLynx. The event appears in the **Heats** window.
2. Click  from the Heats window, the **Load Results** icon. The results for the event appear in the **Heats** window.

Place	Lane	ID	First Name	Last Name	Affiliation	Time	ReactTime
1	4	479	Michael	Thomas	Arkansas	9.89	
2	2	676	Vytautas	Kancleris	Northern Arizona	10.00	
3	8	471	Eddie	Jackson	Arkansas	10.01	
4	6	861	Chris	Stokes	George Mason	10.13	
5	3	451	Ron	Bramlett	Alabama	10.23	
6	5	638	Antwon	Hicks	Mississippi	10.45	
7	7	772	Jabari	Greer	Tennessee	10.99	

This completes the *Transferring Start Lists and Results between LynxPad and FinishLynx Quick Start Guide*.