

## Win7 Networking FinishLynx with Meet Management

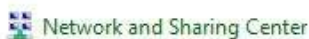
Sections 1 and 2 should be completed on both FinishLynx and Meet Management computer.

### 1. Set Static IP on Computers

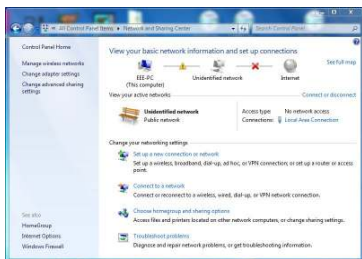
- 1.) Click on **Start** and go to **Control Panel**. On the top right is **View By** with a drop down arrow. Click the drop down arrow and choose Small or Large Icons.



- 2.) Find and double click on **Network and Sharing Center**. They are listed alphabetically by icon name.



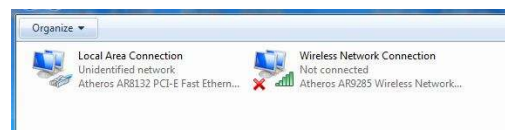
- 3.) This will open the **Network and Sharing Center**. On the left is a blue section titled Control Panel Home.



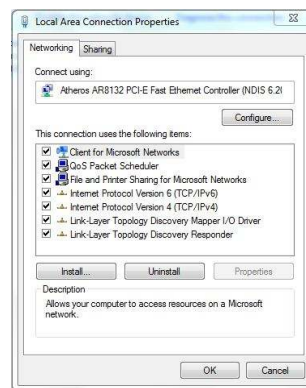
- 4.) Click on the **Change Adapter Settings**.



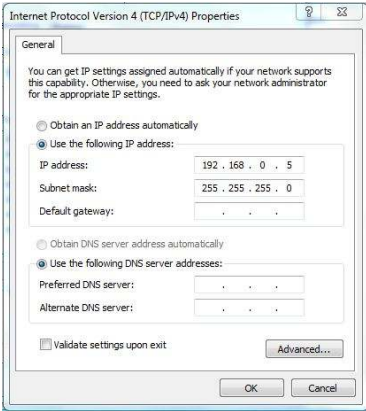
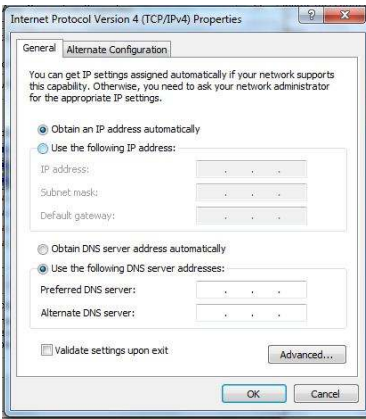
- 5.) A new window will open displaying your network connections. Right click on the **Wireless Network Connection** and select **Disable** from the list of items. This is only necessary for the FinishLynx Capture computer.



- 6.) Right click on the **Local Area Connection** and select **Properties** from the list of items. A new window will appear with a list of connection items. Click to select **Internet Protocol Version 4 (TCP/IPv4)** and click the **Properties** button.



- 7.) A Properties window will appear and is typically set to Obtain an IP address automatically. Click to select the radio button for **Use the following IP address**. In the box for IP address, enter **192.168.0.5** for FinishLynx and hit Tab key to auto fill in Subnet mask **255.255.255.0** (Meet Management computer will be **192.168.0.90**).



8.) Click OK and navigate back to the Control Panel. In the control panel click on the Windows Firewall icon. Under Control Panel Home, on the left, click on **Turn Windows Firewall on or off**.



9.) Turn off both Home and Public Firewalls.



10.) On the FinishLynx computer click on **Start** and in the text box where the cursor is blinking, type in “cmd” and hit enter. A black box will appear with the DOS prompt. Type in “ping (space) 192.168.0.90” and hit Enter. If the network is working and the setup was done accordingly, a reply should come back from the Meet Management computer.

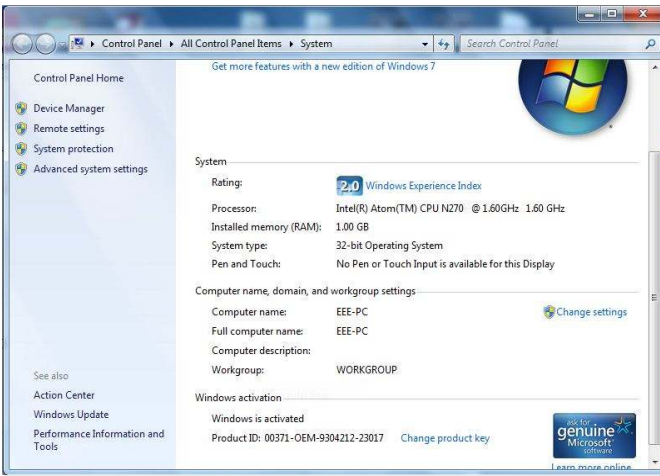


11.) If there is no Reply then double check your steps from Section 1, check your connections and try again.

## 2. Set Workgroup on Computers

**NOTE:** Get permission from the IT department before changing the computers from a Domain to a Workgroup. This could potentially lock up the computer and restrict access.

1.) Right click on **Start** and select **Explore** from the list. In Windows Explorer find the **Computer** icon and right click on it. Choose **Properties** to open System Properties window.



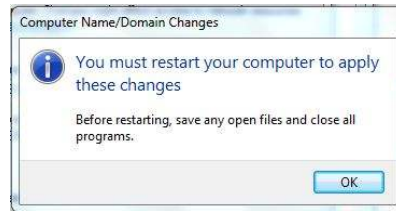
- 2.) Scroll to the bottom of the window and find **Computer Name** and **Workgroup** or **Domain**. Take note of the computer names and if the Workgroups are not the same, click **Change Settings**.



- 3.) In the new System Properties window click **Change**. Here the computer name and workgroup can be changed. Click OK when finished.



- 4.) If the Workgroup name is changed a welcome window will appear, click OK and it will prompt to restart the computer.



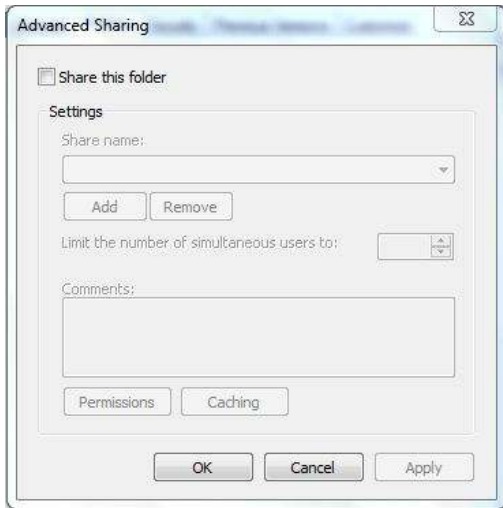
### 3. Create and Share Directory

- 1.) On the Meet Management computer, create a **New Folder** on the C drive or in a main Track folder and name it for the current competition (ex: Tiger Invite030411).
- 2.) Right click on the new folder and choose **Properties** from the list. In the Properties window click on the Sharing tab to view shared status or change.

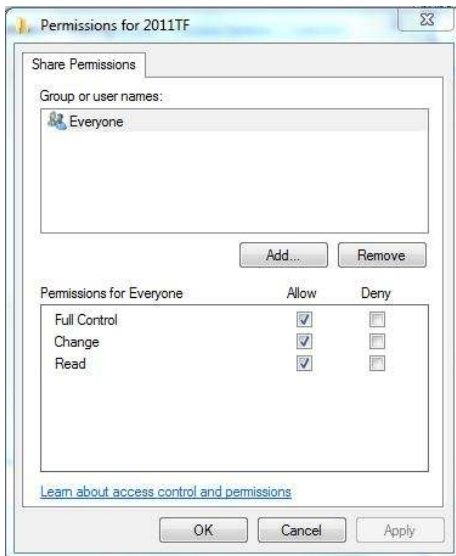


- 3.) Click on the **Advanced Sharing** button in the middle of the window. In Advanced Sharing

click the check box for **Share this Folder**. Share name should appear and then click on **Permissions** near the bottom.



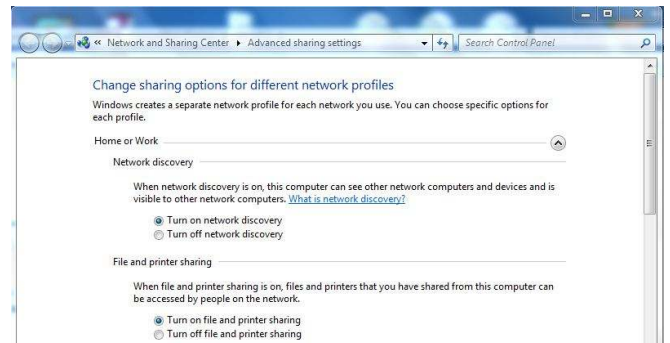
4.) In the Permissions window select **Everyone** and make sure that all Permissions are checked to Allow in the bottom box. This allows full Read and Write privileges. Click **Apply** and then click OK.



5.) Click OK until back to the Windows Explorer window. The appearance of the folder may change and the bar at the bottom may show the new Shared status of the folder. Going back into the Folder Properties will also confirm the folder is now shared. All sub-folders will have the shared properties also.



6.) Next go to **Start | Control Panel | Network and Sharing Center**. Under Control Panel Home click on **Change advanced sharing settings**. This can also be done by clicking on the **Advanced Sharing** button shown above.



7.) Set the **Home** and **Public Sharing** Options to match the following:

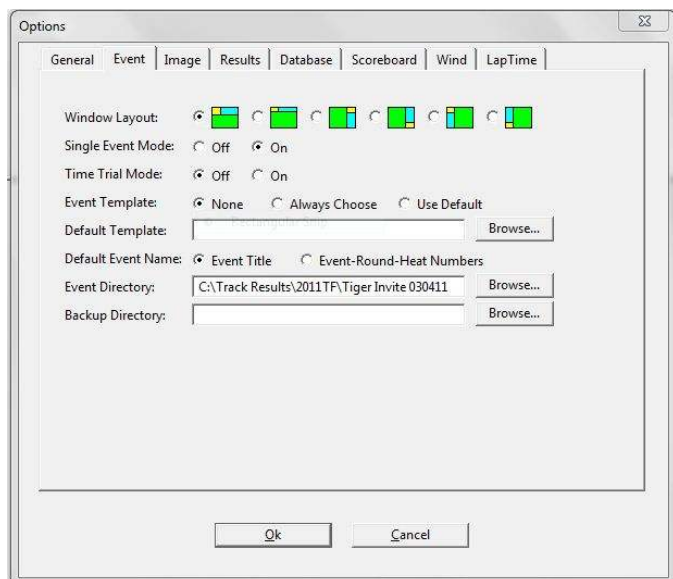
- Turn on network discovery
- Turn on file and printer sharing
- Turn on sharing so anyone with network access can read and write files in Public folders
- Media streaming is on
- Use 128-bit encryption to help protect file sharing connections
- Turn off password protected sharing
- Allow Windows to manage homegroup connections



8.) It may help to restart the computers and make sure all the new settings are applied properly. Recommend that Steps 6-8 be done on both computers.

## 4. Setup FinishLynx Computer

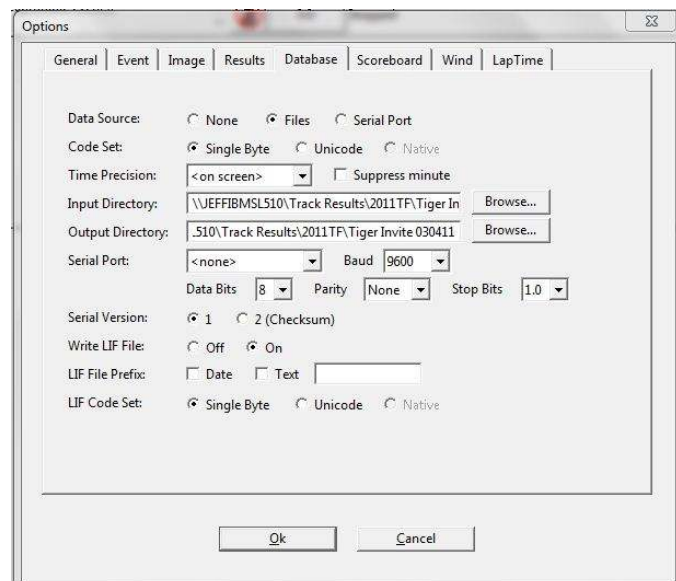
- 1.) Create a competition directory (ex: Tiger Invite030411) on the FinishLynx computer. This can mirror the Meet Management folders and it doesn't hurt to share also, similar to what was done in Section 3 on the Meet Management computer.
- 2.) Open the FinishLynx software on the Capture computer. Go to **File | Options | Event**, find **Event Directory** and click on the **Browse** button to the right.



- 3.) In the Browse window navigate to the C drive on the FinishLynx Capture computer, locate the new competition directory (ex: Tiger Invite030411) and select it. The text box will read C:\TracknField\Tiger Invite030411 or a similar path.
- 4.) Next select the **Database** tab and find the **Input Directory and Output directory** option. These two paths must be the same and will typically be located on the Meet Management computer.
- 5.) Click on the browse button for **Input Directory** and find the **Network** icon in the browse window. Click on the arrowhead to the left and it should display the computers in the Workgroup.



- 6.) Click on the arrowhead to the left of the Meet Management computer and it should display the Shared Directories available. Find the New Competition directory (ex: Tiger Invite 030411) and select it and click OK.



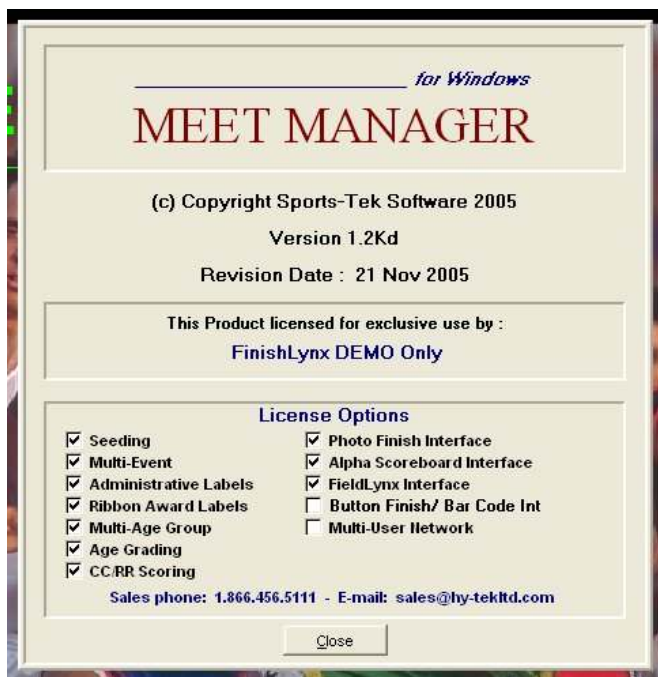
7.) Copy and paste the Path into Output Directory. The two paths should be identical as shown above. Make sure that the Data Source is set to File Sharing so files can be shared over the network. Notice the **Network Path**.

8.) [This step is not necessary – just an extra precaution]. Click the dropdown arrow for Serial Port and choose **Network (connect)** from the list. Enter a port number (typical setup is port **1050**) and enter the IP Address for the Meet Management computer, which is typically **192.168.0.90**.

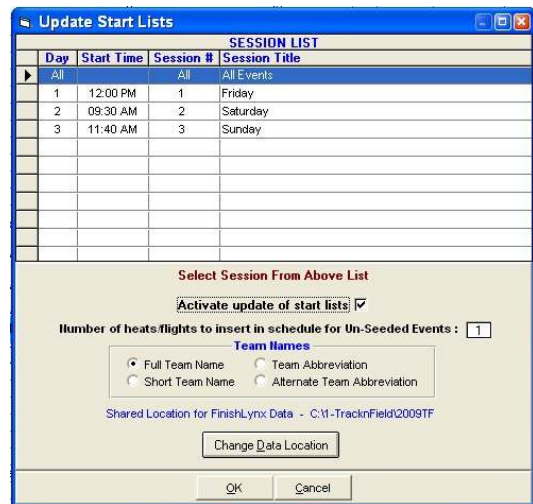
**NOTE:** If the directories do not appear under the Meet Management computer, go back through the Workgroup and Sharing sections thoroughly.

## 5. Setup Meet Mgt. Computer

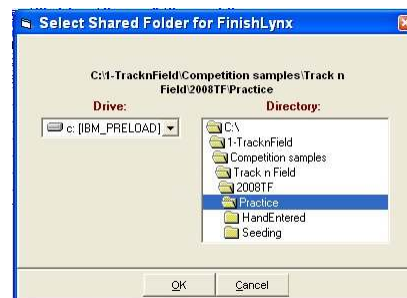
1.) Hy-tek Meet Manager must have the Photo Finish interface in order to share files with FinishLynx. In Hy-tek go to **Help | About** and verify that Photo Finish Interface is checked for License Options.



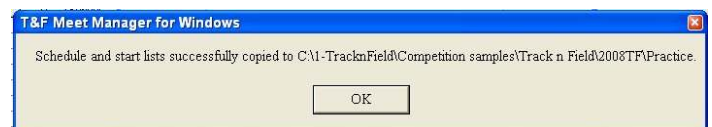
2.) After you have created the competition in Hy-Tek, go to **Run | Interfaces | Update Start Lists**.



3.) In the Update window click to select “Activate update of start lists”. Next, check the **Shared Location for FinishLynx Data** and verify it points to the new competition directory (ex: Tiger Invite 030411). If the location is incorrect, click on Change Data Location button and the following window will appear.



4.) Navigate to the new competition directory, double click to select (open) the competition folder and then click OK. A message should appear that the information was copied to the new directory (shared path is changed).



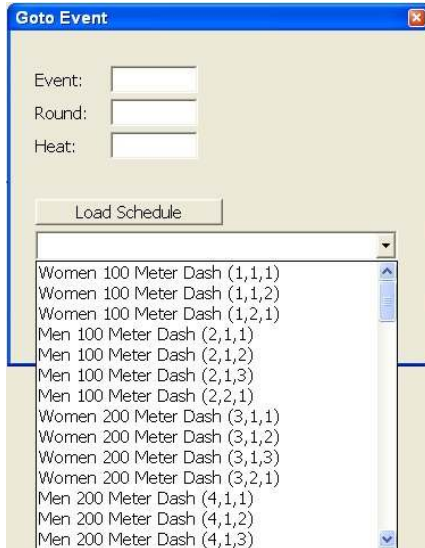
5.) Navigate to the new competition directory in Windows Explorer (right click on Start). Open the new competition directory and verify that Hy-tek has written the following files to the directory: lynx.evt, lynx.ppl, lynx.sch. These files are used by FinishLynx to load the schedule, load start lists and insert competitors by ID number.

## 6. Test File Sharing

- 1.) Open FinishLynx on the capture computer, from the menu bar at the top click on the Go To Event icon.



- 2.) A new window will open for Go to Event. Click on the Load Schedule button and then click on the dropdown arrow in the box below. There should be a list of events in the schedule order setup in Meet Management.



- 3.) Select an event from the list and it will populate the **Event:**, **Round:**, **Heat:** boxes, then click OK. Compare the Start List loaded in FinishLynx with the Start List for that event created by Hy-tek. If the information matches, great, if not, check the Input/Output Directories under **Database | Options** in FinishLynx.
- 4.) Another option is to check the competition directory on the Hy-tek computer and open the **lynx.evt** file in **NotePad** and see that the correct data is being written to the file.

## 7. Optional Backup Directory

**NOTE:** This is best implemented using an additional computer with a unique IP address on the network to act as a server for storing files. The Backup computer must also be in the same Workgroup and IP protocol.

- 1.) On the Finishlynx Capture computer (192.168.0.5) open FinishLynx, go to **File | Options** and under the General tab find Backup Directory and click on the browse button.



- 2.) Navigate to the computer acting as a server and select the directory being used for backup files.
- 3.) To backup events, go to **File** and click **Backup Events** from the menu options. This will copy all Lynx event files and image files to the backup directory. It does not create a backup of the results files (.lif).
- 4.) If this machine is going to have FinishLynx software on it to potentially open up files for reviewing, open FinishLynx, go to **File | Options** and on the General tab set **Hardware Type** to **None** and restart FinishLynx.

**NOTE:** This can also be used as a location for an Evaluate computer to access files without accessing the Capture computer and potentially creating problems with the Capture computer. It also works best when printing images and having multiple computers accessing FinishLynx files.



Tips:

- Hy-tek Meet Manger must be set to FinishLynx File Sharing in order to share the files on the network.



- Sample Directory naming options: Sharing a main Track directory will then automatically share the sub-directories as new competitions are created.



- It's helpful to create the same filing structure on all computers in the competition timing and management network. If there is a problem with the network the location to save the files can be easily re-directed and continue with the competition until the network is working properly.

- If pictures are being printed from a backup directory, then it will be easy to find the location and all the files available to print for customers.