

---

# ***FinishLynx 9.10***

## **Release Notes**



---

# Contents

<b>FinishLynx 9.10</b>	<b>3</b>
Obtaining Lynx products and information .....	3
Obtaining technical support .....	3
New general features .....	4
New warning of offline wind gauge .....	4
Improved Zero gun test feature.....	4
New smart zoom feature.....	5
New access to brightness setting .....	5
Improved Enhance function.....	5
New image Quick Adjust feature .....	6
New keyboard shortcuts .....	6
New image options defaults .....	6
Improved image transfer with Lines Labels... ..	7
New scoreboard features.....	7
New scoreboard scripts.....	7
New scoreboard script fields .....	7
Scoreboard options dialog layout changes.....	7
New scoreboard running time controls.....	9
New LapTime features.....	10
Improved RRS LapTime device support .....	10
New Edit split keys... feature.....	10
New Time Trial mode improvements .....	11
New support for split features.....	11
Improved Find time... function .....	11
Improved scoreboard support of start times .....	11

# FinishLynx 9.10

---

## Obtaining Lynx products and information

There are three ways to obtain Lynx products and information:

- Go to the *Lynx website* (<http://www.finishlynx.com/>) and click the **Products** link
- Call (978) 556-9780 and ask to speak with someone in sales, or
- Send an email to...
  - *Domestic Sales:*            domsales@finishlynx.com
  - *International Sales:*    intlsales@finishlynx.com

---

## Obtaining technical support

There are three ways to obtain technical support for Lynx products:

- Go to the *Lynx website* (<http://www.finishlynx.com/>) and click the **Support** link
- Call (978) 556-9780 and ask to speak with someone in tech support, or
- Send an email to...
  - *Technical support:*        support@finishlynx.com

---

## New general features

### New warning of offline wind gauge

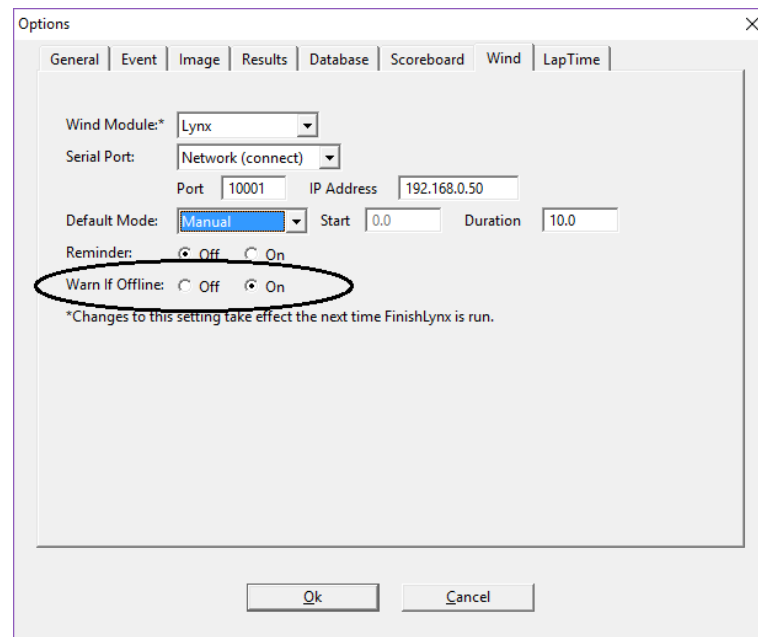
The user can now be warned when the wind gauge does not respond as expected. This feature is specifically added to support real time results when using Regatta Master.

For the **Lynx** wind gauge, a warning can be received any time there is a problem. For other wind gauges, a warning will only appear after a failed attempt to retrieve a reading.

After a warning is received, there is a two minute hold before another warning will appear.

➤ **To turn the warning off/on:**

- Click **File|Options...** and select the **Wind** tab
- Select **Off** or **ON**.
- Click **Ok**.



---

**Note:** Warnings are never received while capture or alignment is enabled.

---

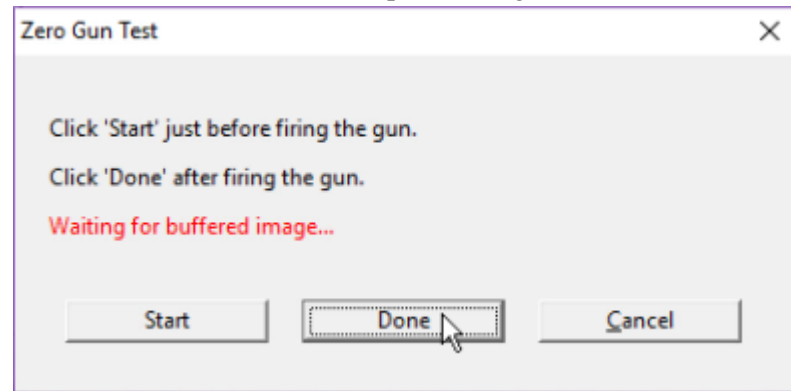
### Improved Zero gun test feature

The **Zero gun test**... now waits for all image to be transferred before the dialog goes away.

➤ **To use the Zero gun test... feature:**

Create a new event and click **Event|Zero gun test...** with capture disabled:

- Click **Start** to start the image capture.
- Wait for a start signal.
- Click **Done** to transfer all captured image.



**Note:** Hit **Cancel** at any time to stop the transfer.

## New smart zoom feature

In align mode, you can now shift-click the zoom buttons to “shrink to fit” the image to the vertical size of the window, avoiding the need to scroll.

**Note:** *2D Align* for **Vision** cameras supports repeated shift-clicks to adjust the horizontal zoom. This can facilitate alignment by zooming into the finish line while still seeing the entire vertical image.

## New access to brightness setting

When **Auto Gain Control (AGC)** is used, the **Gain** field in both the hardware control and event windows now displays the current **Gain** as well as **Brightness** values in the following format:


- **<gain> (<brightness>)**

Clicking on the field allows the user to edit the **Brightness** value.

## Improved Enhance function

The **Enhance** function now works on the entire visible image area if no selection is made.

## New image Quick Adjust feature

There is a new **Quick Adjust**  image toolbar button that allows one click Image Adjustments by changing the gamma value by 0.10.

### ➤ To use the Quick Adjust feature:

- Click to adjust by 1-step
- Shift-click to undo 1-step
- Ctrl-click to reset

## New keyboard shortcuts

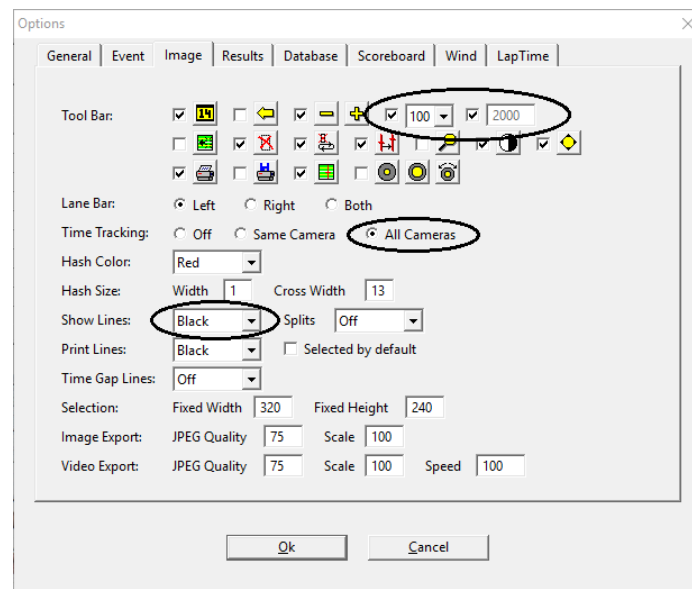
Two new keyboard shortcuts have been added to facilitate common operations:

- **Alt-B** = Set **White Balance**
- **Alt-N** = Enable/disable **Line Labels...**

## New image options defaults

Changes have been made to the following default **Image|Options...**:

- **Time Tracking:** = All Cameras
- **Show Lines:** = Black
- **Zoom selector** checked
- **Zoom aspect control** checked



## Improved image transfer with Lines Labels...

Newly captured image is now displayed faster when **Lines Labels...** are enabled.

---

## New scoreboard features

### New scoreboard scripts

The following scoreboard scripts are now included:

- **uTab3S\_wind.lss**
- **DakRTDExtended.lss**

### New scoreboard script fields

The scoreboard script **;;Results** section has two new fields available:

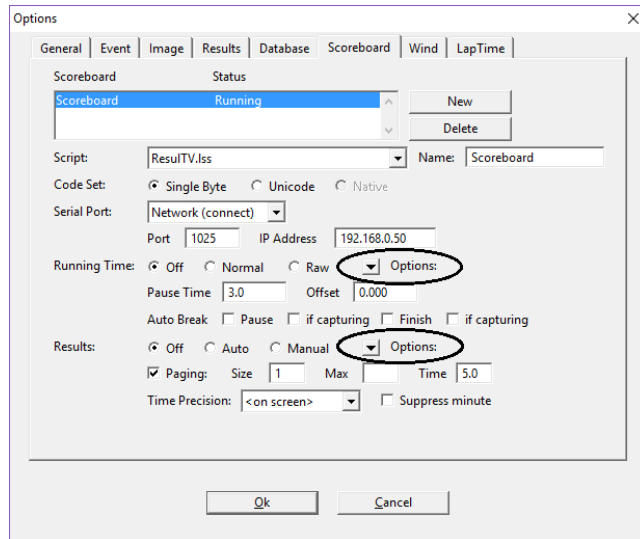
- **\19** – Shows the participant's start time. This is the same field that appears in the LIF file.
- **\1a** – Shows the participant's start time for Time Trial mode, only when there is a key match.

The scoreboard script **;;TimeRunning** has two new methods available:

- **\05** – Shows tenths when running and stopped
- **\06** – Shows hundredths when running and stopped

### Scoreboard options dialog layout changes

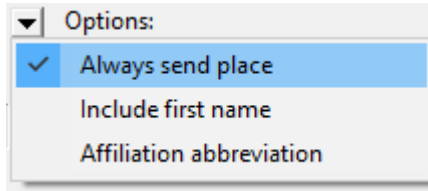
**Running time:** and **Results:** have additional options grouped into a single menu control.



➤ **To select these grouped options:**

Click **Scoreboard|Options...**

- Click the **Options:** down arrow to expand the menu.
- Click the desired **Options:** to select it.



---

**Note:** Selected options will appear with a check mark. Click a selected option to deselect it.

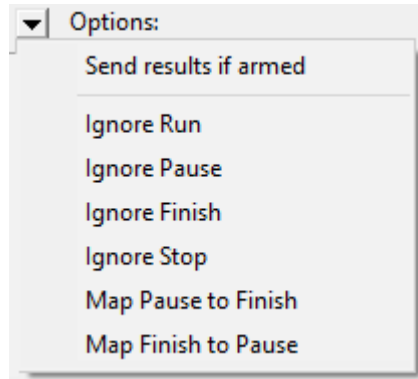
---



---

## New scoreboard running time controls

There are new options to give the user additional flexibility and control over the running time sent to scoreboards.



Four options allow the scoreboard to ignore any or all of the following user commands:

- **Run, Pause, Finish and Stop.**

The last two options allow mapping the **Pause** time to **Finish** function and vice versa.

---

**Note:** These new options can be set independently for each scoreboard. For example, one scoreboard could stop at the finish of a race, while another continues to show the running time by selecting **Ignore Finish**.

---

---

## New LapTime features

### Improved RRS LapTime device support

Protocol version 1.5 is now used by default and is now received every 3 seconds (instead of every 30 seconds).

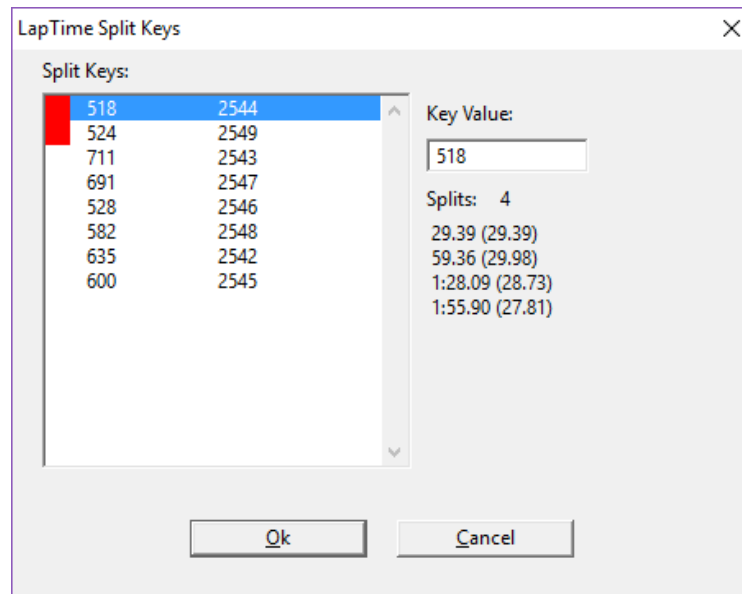
### New Edit split keys... feature

This new dialog lists all the key values received from a **LapTime** device during the current event. The user can now fix a mapping between a tag ID and a key value or map any unassociated key.

All keys not being used by a result line appear at the top of the list and are highlighted in **RED**.

Clicking on a key will show the splits for that key and allow the user to edit the key value. Clicking **Ok** will update the results zone and the map file.

- **To modify a key value:**
- Click **LapTime|Edit split keys...**
  - Select the key value to edit
  - Type in new **Key Value:**
  - Click **Ok**.



---

**Note:** Using a map file is not required. If a path and name are specified in the **LapTime|Options...** dialog, the map file will be updated with new key values.

---

---

## New Time Trial mode improvements

### New support for split features

The following features are now supported in Time Trial mode:

- Split lines
- Split overlays
- Split data modification

### Improved Find time... function

The **Find time...** function is now more flexible in Time Trial mode. If the time entered is before the first start time, it is treated as being elapsed from this start.

### Improved scoreboard support of start times

Results are now sent to scoreboards that include the start time field if “*One at a time*” mode is used and starts are created, deleted or edited.

---

**Note:** “*One at a time*” mode causes results to be sent to scoreboards, always one at a time, only when they change.

➤ Set **Results:** Auto, **Paging** ON, **Size** = 1 and **Time** = 0.

---