

Release Notes

FinishLynx 10.12

Obtaining Lynx Products and Information	1
Obtaining Technical Support	1
What's New	2
Automatic Exposure Control (AEC)	2
Camera White List Management	3
Scoreboard Scripts	3
ADVANCED - Other Settings	4

Obtaining Lynx Products and Information

There are three ways to obtain Lynx products and information:

- » Go to the Lynx website (<http://www.finishlynx.com/product/>)
- » Call (978) 556-9780 and ask to speak with someone in sales, or
- » Send an email to...
 - » Domestic Sales: domsales@finishlynx.com
 - » International Sales: intlsales@finishlynx.com

Obtaining Technical Support

There are three ways to obtain technical support for Lynx products:

- » Go to the Lynx website (<http://www.finishlynx.com/support/>)
- » Call (978) 556-9780 and ask to speak with someone in tech support, or
- » Send an email to...
 - » Technical support: support@finishlynx.com




What's New

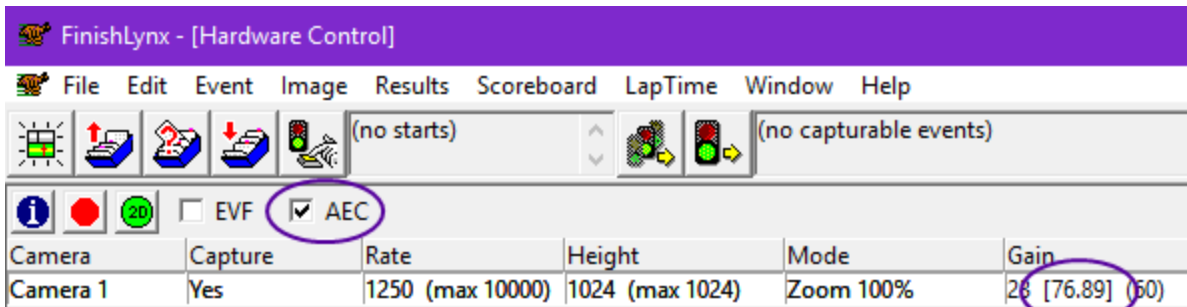
Automatic Exposure Control (AEC)

Automatic Exposure Control (AEC) is a Vision PRO feature meant to optimize focus adjustment.

Depth of field (DOF) is the distance between the nearest and the furthest objects that are in acceptably sharp focus in an image. As light falls through the day, the lens iris will open to compensate loss of light; an ill effect of a wide open iris is a reduced DOF. Accordingly, focus that may have looked proper when adjusted early in the day with a closed iris may look soft once light falls and the iris opens.

In 2D-Align mode, with AEC enabled, it is possible to fully open the iris without overexposing the image. When focus is adjusted in this minimal DOF mode, it will remain proper later in the day once the lens iris opens.

- » To enable AEC and adjust the focus:
 1. From the Hardware Control window, select a Vision PRO camera.
 2. Start 2D-align .
 3. Check the **AEC** checkbox.
 - a. **Note:** AEC is only available if the Gain method is set to *Auto-Gain Control (AGC)*. When AEC is active, *Auto-Iris Control (AIC)* is temporarily disabled.
 4. Open the iris completely.
 5. Adjust the focus. Use the Focus Helper stop at the highest possible value.
 6. Uncheck the **AEC** checkbox.
 7. Adjust the iris for current conditions.
 - a. **Note:** With a remote-controlled lens and *Auto-Iris Control (AIC)*, the iris will return to an optimal setting automatically.



TIP: The exposure time (ms) appears between square brackets [] in the **Gain** field of the Hardware Control window.

Camera White List Management

It is now possible to run concurrent FinishLynx sessions on a single network, each session controlling specific cameras.

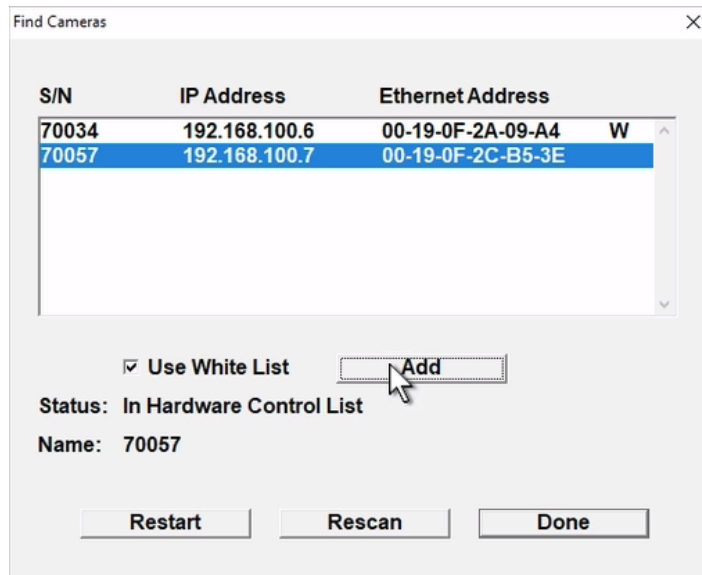
The White List feature allows you to determine which EtherLynx or Identilynx cameras should be booted by FinishLynx, and which should be ignored. This can be useful in an advanced configuration where it is necessary to run FinishLynx on multiple computers connected to the same network.

TIP: To enable the Whitelist feature, you must upgrade your EtherLynx camera by accessing the **Setup** tab of the **Camera Settings** and applying the "updatefw" **Upgrade Code**. This feature is not supported for EtherLynx 2000 (5L100 & 5L200) cameras.

» To use White List Management in a Multi-FinishLynx set up:

1. Go to **Help | Find Cameras...** All cameras on the network will be displayed.
2. Check the **Use White List** box.
3. Select the camera(s) that FinishLynx on this computer should boot (or ignore).
4. Click **Add** (or **Remove**). A "W" will appear to the right of cameras on the white list (or blank if it is not on the white list).
5. Repeat on all FinishLynx computers on the network, being careful to have each camera white listed on only 1 computer.
6. Reboot all cameras and restart all FinishLynx sessions

NOTE: When the White List feature is enabled, only cameras showing a "W" will be booted by FinishLynx. To allow FinishLynx to boot all cameras, simply uncheck the **Use White List** box.





Scoreboard Scripts

» [uTabLED_Tenth.Iss](#) adds the ability to send running time with 1/10th precision.





ADVANCED - Other Settings

Additional *Other settings* are included:

- » **Event\Image\Zoom\Presets** list of values that controls which zoom levels are stepped through by the  and  buttons of the Image Zone for all image windows. The list must be comma separated, in ascending order and without whitespace. When the zoom level is outside the range of the list, default values are used.
 - » **Note:** Example - To add a 75% zoom level, enter "75". To add 75% and 150%, enter "75,100,150".

TIP: To set different values for a specific window, create a PresetsN, where N is 1 or greater to indicate the window number.

- » **Hardware\Align2D\AEC\MinGain** sets the minimum gain target for 2D-Align mode when AEC is enabled. Default = 15.
- » **Hardware\Align2D\AEC\MaxGain** sets the minimum gain target for 2D-Align mode when AEC is enabled. Default = 25.
- » **Hardware\Ethernet\WhiteList** comma separated list of camera hardware addresses which defines the cameras FinishLynx will boot.
- » **Hardware\Ethernet\BlackList** comma separated list of camera hardware addresses which defines the cameras FinishLynx will ignore.
- » **Hardware\Window\ZoomPresets** controls which zoom levels are stepped through by the  and  buttons of the Hardware Control window.

NOTE: These advanced settings are for experienced users only. For more information on how to access these settings, please contact our support team.