

FieldLynx Lite Windows Setup Technical Support Guide

Introduction

In this technical support guide, you will learn how to set up and configure FieldLynx Lite for Windows. This setup will include connection to display boards, wind gauge and lasers. Equipment needed may include: wireless access point, antenna with booster, 8 port Ethernet switch, USB to serial adapter(s).

FieldLynx Lite for Windows

Note: Windows 64 bit computers will install all 32 bit applications in a different location under Program Files (x86).

Step 1: Install software

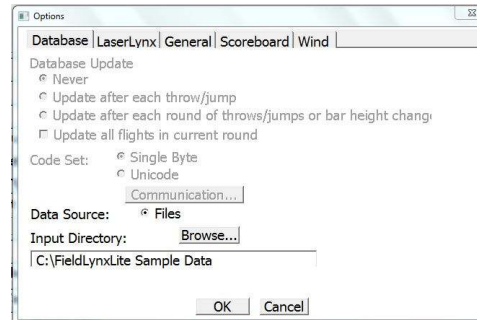
- 1) Install the latest version of FieldLynx Lite for Windows on a Netbook computer.
- 2) Follow the instructions on your screen to install FieldLynx Lite. The software can also be downloaded and installed from our web site. FieldLynx Lite requires a serial number to operate.
- 3) Open FieldLynx Lite, click [Help | About](#) and verify the latest version of FieldLynx Lite is installed.

Step 2: Install Plug-ins

- 1) Install any necessary plug-ins purchased for FieldLynx Lite Windows (Scoreboard, Wind and Laser).
- 2) Follow the instructions on your screen to install plug-ins. The software can also be downloaded and installed from our web site.
- 3) Open up FieldLynx Lite and click on [Help | About FieldLynx Lite](#) and verify the most recent versions are installed for each product.

Step 3: FieldLynx Lite Software Setup

- 1) Open the FieldLynx Lite software.
- 2) To open the Options setup, click on [Options | Preferences](#) from the main menu.
- 3) Click on the [Database](#) tab to setup the preferences.
- 4) [Database Source](#) should be set to files.
- 5) Click on Browse for the [Input Directory](#) and locate the competition folder for the lynx.ppl file.
- 6) Click OK to return to Options window.
- 7) Select the [General](#) tab next.
- 8) Select the [Language](#) being used for the competition.

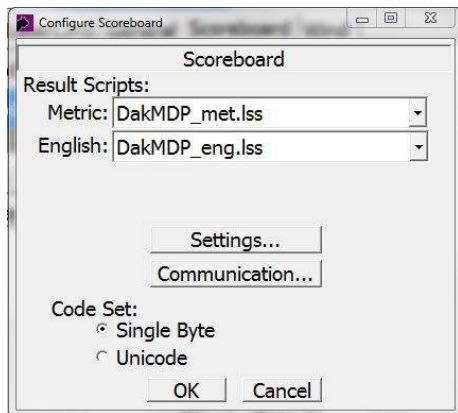
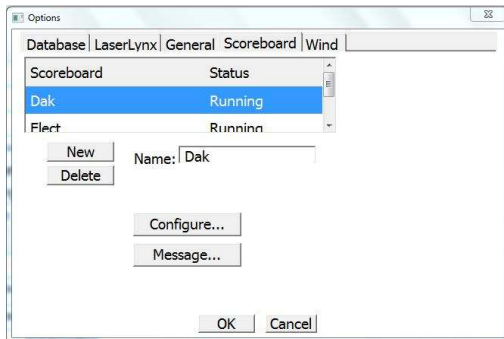


Step 4: FieldLynx Lite Scoreboard Setup

Note: Each scoreboard and manufacturer has different options available for the boards; make sure you are familiar with these before attempting to setup the options.

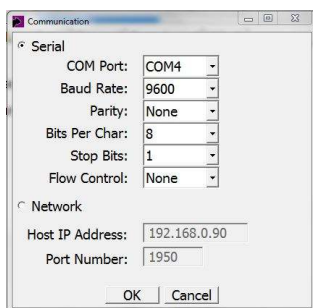
- 1) Open the FieldLynx Lite software if not open already.
- 2) To open the Options setup, click on [Options | Preferences](#) from the main menu.
- 3) Click on the [Scoreboard](#) tab to setup the preferences.
- 4) Under the Scoreboard Options click on [New](#) to create a new scoreboard output.
- 5) Click in the Name text box and name the board so it is easy to distinguish if you have multiple scoreboards listed.
- 6) Click on the [Configure](#) button to setup the specifics of the display board.
- 7) Click on the dropdown for the different output options and choose the script appropriate for the display being used.
- 8) Click on the [Settings](#) button to choose the specific data output to the board.
- 9) For Results, select the radio button for [Manual](#).
- 10) The remainder of the settings are more specific to the user and what can be displayed on the board.
- 11) Click [OK](#) and then click the button for [Communication](#).

- 12) Choose the method of communication for your display, **Serial** or **Network**. These settings are specific to the display and manufacturer.
- 13) Click OK on each window to close them. Close and reopen the FieldLynx Lite software to initialize the communication setup.
- 14) Navigate back to the Scoreboard Options and confirm that the **Status** is now **Running** for your display.



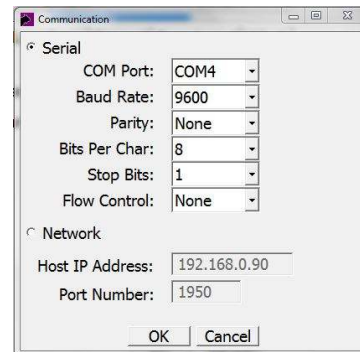
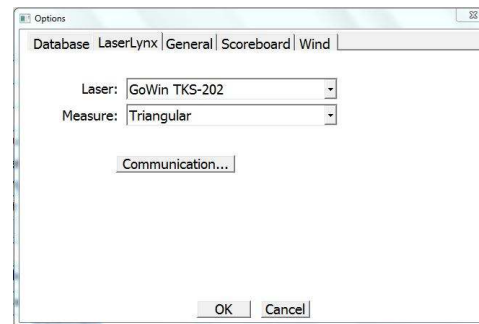
Step 5: FieldLynx Lite Wind Setup

- 1) Open the FieldLynx Lite software.
- 2) To open the Options setup, click on **Options | Preferences** from the main menu.
- 3) Click on the **Wind** tab to setup the preferences
- 4) Click on the Wind Module drop down and select WG-Lynx
- 5) Select **Custom** for the Mode and set the time **Interval** according to the rules of the event.
- 6) Click on the button for **Communication**
- 7) Select the appropriate method of communication and set the protocol specific to the device. Lynx WG is **9600-8-None-1** for serial communication.
- 8) Click OK until all the Options windows are closed.
- 9) Close and re-start the FieldLynx Lite software to initialize the new options set up.



Step 6: FieldLynx Lite Laser Setup

- 1) Open the FieldLynx Lite software.
- 2) To open the Options setup, click on **Options | Preferences** from the main menu.
- 3) Click on the **LaserLynx** tab to setup the preferences
- 4) Click on the **Laser** drop down and select model of laser being used.
- 5) Click on the **Measure** drop down and select Triangular for the most common format for measurement.
- 6) Click on the button for **Communication**.
- 7) Select the appropriate method of communication and set the protocol specific to the device. The Gowin TKS-202 laser is defaulted to **9600-None-8-1** for serial communication. Flow Control is typically set to None.
- 8) Click OK until all the Options windows are closed.
- 9) Close and re-start the FieldLynx Lite software to initialize the new communication setup.



This completes the *FieldLynx Lite Windows, Technical Support Guide*.

Horizontal Jump

In this technical support section, you will learn how to set up and operate a horizontal jump event in FieldLynx Lite for Windows. This setup will include connection to a display board and wind gauge. Equipment needed may include: wireless access point, antenna with booster, 8 port Ethernet switch, USB to serial adapter(s).

Loading Athletes

Note: Before proceeding with this technical guide the operator should have performed the steps in the FieldLynx Lite Windows Setup guide before attempting to operate an event.

Step 1: People File

- 1) Create a lynx.ppl file using meet management software, Excel or Notepad.
- 2) Place the lynx.ppl file in a folder on the event computer or in a folder on the meet management computer if using a network.

Step 2: Check Connections

- 1) If operating wireless with a meet management software, make sure that the wireless card is connected to Lynx SSID.
- 2) From the competition computer, ping the Access Point (AP) (**192.168.0.30**) to confirm communication
- 3) Ping the competition computer from the FieldLynx Lite computer (**192.168.0.90**)
- 4) Confirm that there is a lynx.ppl file located on the Meet Management computer.

Step 3: Set up Event

- 1) Open the FieldLynx Lite software and fill in the appropriate Event #, Round #, Flight # if being used.
- 2) Enter the **Event Name**.
- 3) Select the correct unit of **Measure**.
- 4) Click the dropdown for **Event Type** and select the appropriate event.
- 5) The data entry fields in the top right will change to match

#	Mark	Wind
1	0.00	-0.0

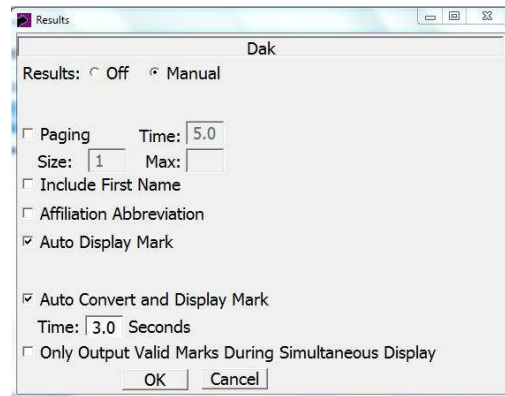
the type of event.

Plug-ins Setup

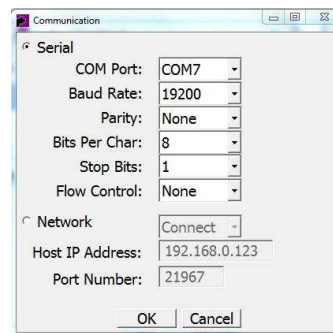
Note: To keep things simple FieldLynx Lite will use a serial connection for the scoreboard and wind gauge communication. Make sure the USB to serial adapters are plugged into the computer and recognized by the Device Manager before opening FieldLynx Lite.

Step 1: Scoreboard Setup

- 1) Click on **Options | Preference** and select the **Scoreboard** tab.
- 2) Select the scoreboard listed or create a **New** scoreboard
- 3) Click on the **Configure** button to setup or confirm the scoreboard setup.
- 4) Click the dropdown arrows for the **Results Scripts** and select **DakMDP_met.lss** and **DakMDP_eng.lss** for Metric and English result scripts.
- 5) Click on the **Settings** button and set according to image below.



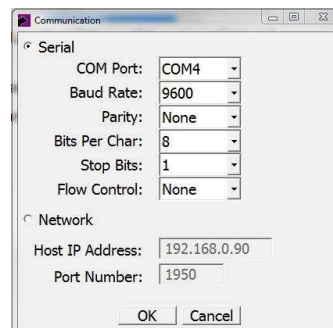
- 6) Click **OK** and then click on the **Communications** button
- 7) Set the communication similar to image below. COM port will vary by computer and baud rate may vary with scoreboard manufacturers.



- 8) Click **OK** until back to the main FieldLynx Lite window.
- 9) Click on **File | Exit** and then re-start FieldLynx Lite to initialize communication. (This can wait until the wind gauge is setup and then initialize all communication setup)

Step 2: Wind Gauge Setup

- 1) Click on **Options | Preference** and select the **Wind** tab.
- 2) Click the dropdown for **Module** and select **WG-Lynx**. The communication protocol will be specific to the brand and model.
- 3) Select **Custom** for the **Mode** and set the Interval to the appropriate number of seconds for the event (5 secs for long and triple jump).
- 4) Click on the **Communication** button and set according to image below (this is protocol for Lynx Wind Gauge).




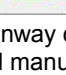




- 5) Be aware that the COM port used for the scoreboard communication was not in the dropdown list.
- 6) Click **OK** until back to the main FieldLynx Lite window

- Click on **File | Exit** and then re-start FieldLynx Lite to initialize communication.

Note: If an athlete shows up late and the rules allow, they can be added to the event by manually creating them in FieldLynx Lite and clicking **Add** to add them to the lynx.ppl.

Competition

Step 1: Entering Marks

- Enter the competitor ID for the athlete up and then click **Find**.
- Click to select the **Wind** field 
- Click the green **Wind** button  and when the competitor starts down the runway click **Start** to begin the reading. (this can be entered manually also if not connected to wind gauge)
- Once the wind reading comes in, select the **Mark** field,  click on the **Data Entry** button  and wait for the official to read the measurement
- Enter the measurement by clicking the buttons on the keypad display or use the keyboard to type in the measurement 
- Click the **Return** button  ****Athletes mark will display on the board and convert measurement.**
- Enter the ID of the next competitor and click **Find**.
- Repeat process.

This completes the *FieldLynx Lite, Horizontal Jump, Technical Support Guide*.

Horizontal Throw

In this technical support section, you will learn how to set up and operate a horizontal throw event in FieldLynx Lite for Windows. This setup will include connection to a display board and laser. Equipment needed may include: wireless access point, antenna with booster, 8 port Ethernet switch, USB to serial adapter(s).

Loading Athletes

Note: Before proceeding with this technical guide the operator should have performed the steps in the FieldLynx Lite Windows Setup guide before attempting to operate an event.

Step 1: People File

- Create a lynx.ppl file using meet management software, Excel or Notepad.
- Place the lynx.ppl file in a folder on the event computer or in a folder on the meet management computer if using a network.

Step 2: Check Connections

- If operating wireless with a meet management software, make sure that the wireless card is connected to Lynx SSID.
- From the competition computer, ping the Access Point (AP) (**192.168.0.30**) to confirm communication
- Ping the competition computer from the FieldLynx Lite computer (**192.168.0.90**)
- Confirm that there is a lynx.ppl file located on the Meet Management computer.

Step 3: Set up Event

- Open the FieldLynx Lite software and fill in the appropriate Event #, Round #, Flight # if being used.
- Enter the **Event Name**.
- Select the correct unit of **Measure**.
- Click the dropdown for Event Type and select the appropriate event.
- The data entry fields in the top right will change to match

#	Mark	Wind
1	0.00	N/A

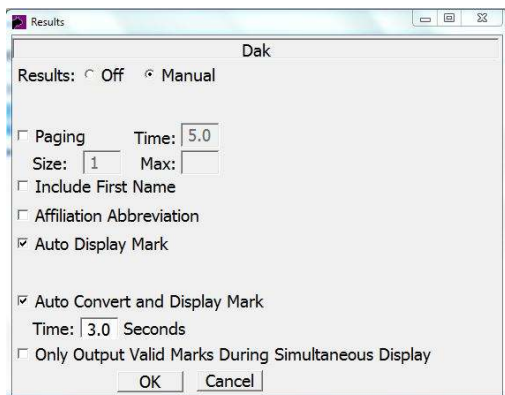
the type of event.

Plug-ins Setup

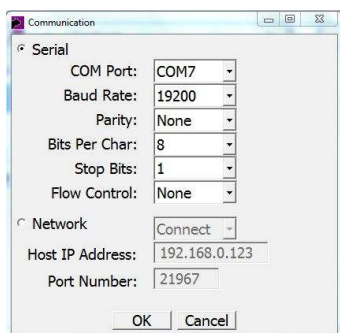
Note: To keep things simple FieldLynx Lite will use a serial connection for the scoreboard and laser communication. Make sure the USB to serial adapters are plugged into the computer and recognized by the Device Manager before opening FieldLynx Lite.

Step 1: Scoreboard Setup

- Click on **Options | Preference** and select the **Scoreboard** tab.
- Select the scoreboard listed or create a **New** scoreboard
- Click on the **Configure** button to setup or confirm the scoreboard setup.
- Click the dropdown arrows for the **Results Scripts** and select **DakMDP_met.iss** and **DakMDP_eng.iss** for Metric and English result scripts.
- Click on the **Settings** button and set according to image below.



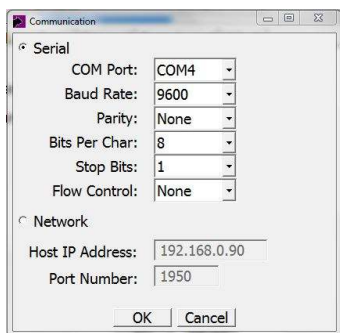
- 6) Click **OK** and then click on the **Communications** button
- 7) Set the communication similar to image below. COM port will vary by computer and baud rate may vary with scoreboard manufacturers.



- 8) Click **OK** until back to the main FieldLynx Lite window.
- 9) Click on **File | Exit** and then re-start FieldLynx Lite to initialize communication. (This can wait until the laser is setup and then initialize all communication setup)

Step 2: Laser Setup

- 1) Click on **Options | Preference** and select the **LaserLynx** tab.
- 2) Click the dropdown for **Laser** and select the appropriate laser. The communication protocol will be specific to the brand and model.
- 3) Click the dropdown for **Measure** and select **Triangular**.
- 4) Click on the **Communication** button and set according to image below (this is protocol for Gowin TKS-202)



- 5) Be aware that the COM port used for the scoreboard communication was not in the dropdown list.

- 6) Click **OK** until back to the main FieldLynx Lite window
- 7) Click on **File | Exit** and then re-start FieldLynx Lite to initialize communication.
- 8) Click on **Setup Laser...** to setup the controls.
- 9) Radius should be defaulted to the correct measurement for the event, but it can be edited if necessary.
- 10) Click on **Set Controls** and then align the laser and take measurement to center of circle.
- 11) This remains as a constant during the competition and needs to be reset if anything gets moved or bumped.
- 12) Click **OK** and return to the Main Window.

Note: It is wise to take a test measurement and verify your equipment and settings are working properly.

Note: If an athlete shows up late and the rules allow, they can be added to the event by manually creating them in FieldLynx Lite and clicking **Add** to add them to the lynx.ppl.

Competition

Step 1: Entering Marks

Manual Data Entry:

- 1) Enter the competitor ID for the athlete up and then click **Find**.
- 2) Click to select the **Mark** field



- 3) Click on the **Data Entry** button
- 4) Enter the measurement by clicking the buttons on the keypad display or use the keyboard to type in the measurement



- 5) Click the **Return** button
****Athletes mark will display on the board and convert measurement**

Laser Plug-in

- 1) Enter the competitor ID for the athlete up and then click **Find**.
- 2) Click to select the **Mark** field
- 3) After the competitor throws wait for the operator to align the laser with the prism.



- 4) Click the **Laser** button and the laser will automatically take a measurement.
- 5) The software subtracts the circle radius so the measurement is to the foul line.
****Athletes mark will display on the board and convert measurement.**
- 6) Enter the ID of the next competitor and click **Find**.

This completes the *FieldLynx Lite, Horizontal Throw, Technical Support Guide*.

Vertical Jump

In this technical support section, you will learn how to set up and operate a vertical jump event in FieldLynx Lite for

Windows. This setup will include connection to a display board. Equipment needed may include: wireless access point, antenna with booster, 8 port Ethernet switch, USB to serial adapter(s).

Loading Athletes

Note: Before proceeding with this technical guide the operator should have performed the steps in the FieldLynx Lite Windows Setup guide before attempting to operate an event.

Step 1: People File

- 3) Create a lynx.ppl file using meet management software, Excel or Notepad.
- 4) Place the lynx.ppl file in a folder on the event computer or in a folder on the meet management computer if using a network.

Step 2: Check Connections

- 5) If operating wireless, make sure that the wireless card is connected to Lynx SSID.
- 6) From the competition computer, ping the Access Point (AP) (192.168.0.30) to confirm communication
- 7) Ping the competition computer from the FieldLynx Lite computer (192.168.0.90)
- 6) Confirm that there is a lynx.ppl file located on the Meet Management computer.

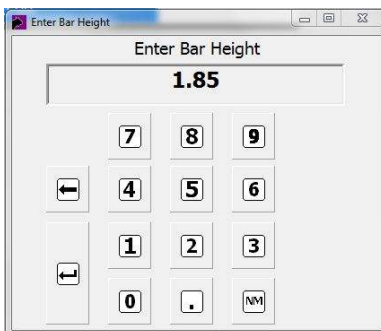
Step 3: Set up Event

- 7) Open the FieldLynx Lite software and fill in the appropriate Event #, Round #, Flight # if being used.
- 8) Enter the **Event Name**.
- 9) Select the correct unit of **Measure**.
- 10) Click the dropdown for **Event Type** and select the appropriate event.
- 11) The data entry fields in the top right will change to match

Bar Height	1	2	3
0.00			

the type of event.

- 12) Click in the **Bar Height** field and a window will open to enter the bar height. This must be done manually as the competition progresses.

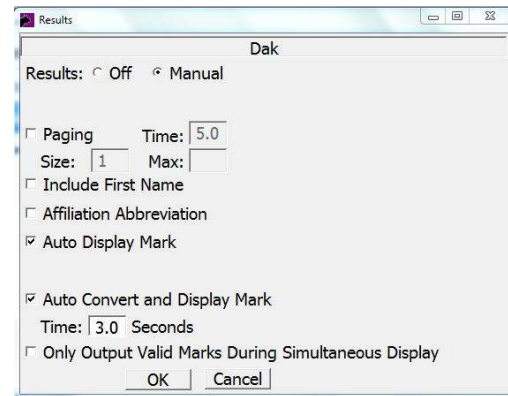


Plug-ins Setup

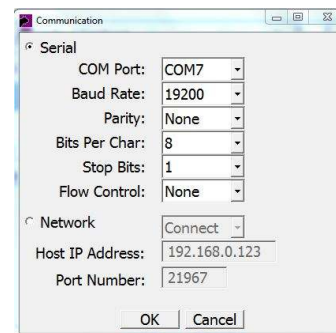
Note: To keep things simple the event will use a serial connection for the scoreboard communication.

Step 1: Scoreboard Setup

- 10) Click on **Options | Preference** and select the **Scoreboard** tab.
- 11) Select the scoreboard listed or create a **New** scoreboard
- 12) Click on the **Configure** button to setup or confirm the scoreboard setup.
- 13) Click the dropdown arrows for the **Results Scripts** and select **DakMDP_met.lss** and **DakMDP_eng.lss** for Metric and English result scripts.
- 14) Click on the **Settings** button and set according to image below.



- 15) Click **OK** and then click on the **Communications** button
- 16) Set the communication similar to image below. COM port will vary by computer and baud rate may vary with scoreboard manufacturers.





- 17) Click **OK** until back to the main FieldLynx Lite window.
- 18) Click on **File | Exit** and then re-start FieldLynx Lite to initialize communication.

Competition

Note: The event should also be done on the traditional paper as backup because in vertical events the previous attempts are not saved for each competitor.

Step 1: Entering Marks

- 1) Enter the competitor ID for the athlete up and then click Find.

- 2) Click on the **Make, Miss** button   once the official has made their call for a legal jump or not.

****Athletes mark will display on the board along with the attempts at each height and then convert measurement.**

- 3) Enter the ID for the next competitor in competition order and repeat the process. If the competitor has misses at previous attempts they must be re-entered so that the output to a display is correct.

This completes the *FieldLynx Lite Vertical Event, Technical Support Guide*.

NOTES: