

Release Notes

FieldLynx 1.80

Obtaining Lynx Products and Information	1
Obtaining Technical Support	1
What's New	2
Athlete Timer Output	2
Log File Improvements	4
Combined Setup Screen	4
Multiple Jump Board Support	5
Appendix 1	7

Obtaining Lynx Products and Information

There are three ways to obtain Lynx products and information:

- » Go to the Lynx website (<http://www.finishlynx.com/>) and click the Products link
- » Call (978) 556-9780 and ask to speak with someone in sales, or
- » Send an email to...
 - » Domestic Sales: domsales@finishlynx.com
 - » International Sales: intlsales@finishlynx.com

Obtaining Technical Support

There are three ways to obtain technical support for Lynx products:

- » Go to the Lynx website (<http://www.finishlynx.com/>) and click the Support link
- » Call (978) 556-9780 and ask to speak with someone in tech support, or
- » Send an email to...
 - » Technical support: support@finishlynx.com



What's New

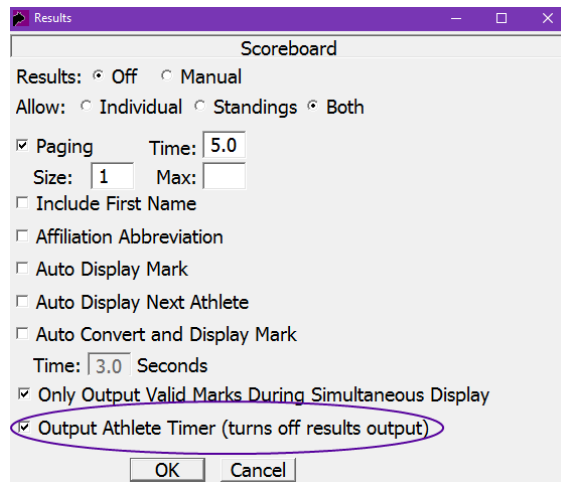
Athlete Timer Output

The **Athlete Timer** can now be sent to scoreboards.

» To configure a scoreboard with the **Athlete Timer**:

1. Click **Options|Preferences**.
2. Select the **Scoreboard** tab.
3. Click **New**.
4. Click **Configure...**
5. Set the **Result Scripts: Metric**: to a compatible script with the athlete timer output (see "Compatible Scripts" on the facing page).
6. Click **Settings...**
7. Check the **Output Athlete Timer (turns off results output)** box.

Scoreboard configuration screen



8. Click **OK**.
9. Configure the **Communication** settings.
10. Click **OK** to close the **Options** dialog.

NOTE: When a Scoreboard object is configured to output the Athlete Timer, it cannot be used to display results (competitor information and marks).

- » To send the **Athlete Timer** data to scoreboards:
1. Click to expand the event and round from the main screen.
 2. Select the correct flight.
 3. Click on the athlete name from the **Athlete List** window.
 4. The **Athlete Timer** box starts automatically and the data output is sent to the scoreboard.

NOTE: To reset the Athlete Timer, simply click on the Athlete Timer box and then Yes.

Compatible Scripts

Scripts included in the FieldLynx Scoreboard Plug-In 1.40 have been updated to work with the **Athlete Timer**.

- » To build your own **Athlete Timer** compatible scripts:
1. Create a new or open an existing FieldLynx scoreboard script (*.lss) in Notepad.
 2. Add or modify a **;;TimeRunning** section configured for the scoreboard in use (copy from FinishLynx if relevant).
 3. Save the file and restart FieldLynx.
 4. Test and make any required script change to improve the format.

TIP: An example of the **;;TimeRunning** section from the FinishLynx `uTabLED.lss` script is shown in the figure below.

;;TimeRunning section from uTabLED.lss

```

;; Initialization
;; This is sent once to initialize the scoreboard.
;; Line codes:
;; \00 No variable
;;
;; send a reset
\00\X0=2\1b r\03\L0\U2\F2\Re\X\7F\&2\U0\02
;;
;;TimeRunning
;; This is sent approximately 10 times per second.
;; Line codes:
;; \00 No variable
;; \01 Formatted time
;; \02 Binary time in milliseconds (as a 4 byte little endian integer)
;; Setting register[0] to 1 in a format line will cause that line and
;; subsequent lines to only be sent once per second (when the second's
;; digit changes) instead of approximately 10 times per second. Setting
;; register[0] to 0 will resume normal operation for remaining lines.
;;
;; clear all
\00=0\X0=2\1b0Q\00\00\00\00\00\00\00\10\00\03\L0\U2\F2\Re\X\7F\&2\U0\02
;; display "hh:mm:ss " right aligned
\01=0\X0=2\1b0S\00\00\00\00\02501.125\04 \Re\03\L0\U2\F2\Re\X\7F\&2\U0\02
;;
;;TimeStopped
;; This is sent when the time is stopped by a beam break.
;; Line codes are identical to the TimeRunning line codes.
;;

```



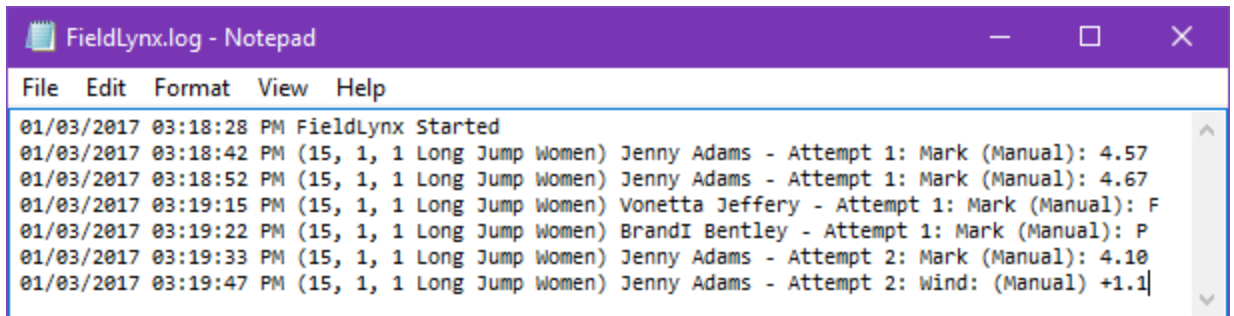
NOTE: FieldLynx 1.80 requires the FieldLynx Scoreboard Plug-In 1.40 to output the Athlete Timer. See the "Obtaining Lynx Products and Information" on page 1 for contact details.

Log File Improvements

FieldLynx now logs every mark to the FieldLynx.log file with a time stamp, as soon as they are manually entered or received from LaserLynx. This can be useful in case a mark was erased by error and needs to be recovered, for example.

» To view the FieldLynx.log file:

1. Open Windows Explorer.
2. Click on Documents in the left pane.
3. Double-click the Lynx folder.
4. Double-click the FieldLynx (or FieldLynxLite) folder.
5. Open the FieldLynx.log file in Notepad.



```
FieldLynx.log - Notepad
File Edit Format View Help
01/03/2017 03:18:28 PM FieldLynx Started
01/03/2017 03:18:42 PM (15, 1, 1 Long Jump Women) Jenny Adams - Attempt 1: Mark (Manual): 4.57
01/03/2017 03:18:52 PM (15, 1, 1 Long Jump Women) Jenny Adams - Attempt 1: Mark (Manual): 4.67
01/03/2017 03:19:15 PM (15, 1, 1 Long Jump Women) Vonetta Jeffery - Attempt 1: Mark (Manual): F
01/03/2017 03:19:22 PM (15, 1, 1 Long Jump Women) BrandI Bentley - Attempt 1: Mark (Manual): P
01/03/2017 03:19:33 PM (15, 1, 1 Long Jump Women) Jenny Adams - Attempt 2: Mark (Manual): 4.10
01/03/2017 03:19:47 PM (15, 1, 1 Long Jump Women) Jenny Adams - Attempt 2: Wind: (Manual) +1.1
```

NOTE: This feature is also included in FieldLynxLite 1.80.

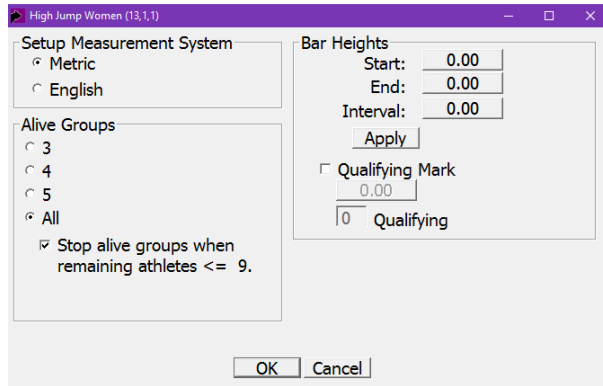
Combined Setup Screen

The Event Setup screens have been combined to improve usability.

» To view the **Event Setup** screen:

1. Go to the **Athlete List** for the selected flight of an event.
2. Click **Event|Setup** (or the Event Setup icon).

Vertical Jump Event Setup screen



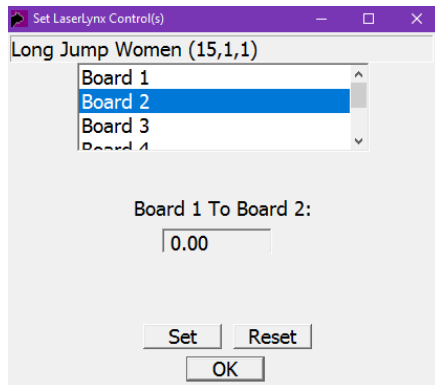
Multiple Jump Board Support

FieldLynx allows the operator to specify the offset between boards for horizontal jumps using LaserLynx.

» To setup board offset with LaserLynx:

1. Go to the **Event Setup** screen.
2. Click **Set Control(s)**.
3. Measure the **Near/Far** values for **Board 1** (as usual).
4. Click to select **Board 2**.
5. Position the prism on the near side of board 2 (see "Appendix 1" on page 7) and sight with LaserLynx.
6. Click **Set** (wait for the LaserLynx measurement).
7. Repeat for all other boards.

LaserLynx Setup screen



Board Name

The **Event Setup** screen for horizontal jumps allows the operator to customize the name of each board.



- » To rename one or more boards:
1. Go to the horizontal jumps **Event Setup** screen.
 2. Click a cell in the **Name** field of the **Board Setup** grid.
 3. Type to enter a new board name.
 4. Hit **Enter**.

Horizontal Jump Event Setup screen

Long Jump Women (15.1.1)

Setup Measurement System

Metric
 English

Setup Attempts

Attempts (Qualify)
 Athletes To Final
 Attempts (Final)

Attempts

Qualifying Mark
0.00

Qualifying Athletes

#	Name	Offset
1	Board 1	N/A
2	Free-text	0.000
3	Board 3	0.000
4	Board 4	0.000
5	Board 5	0.000
6	Board 6	0.000

Setup LaserLynx

Set Control(s)

Test Measurement

OK Cancel

Appendix 1

