

---

# FieldLynx for Windows and the WinCE Operating System Release Notes



# Release Notes

## FieldLynx 1.80

Obtaining Lynx Products and Information .....	1
Obtaining Technical Support .....	1
What's New .....	2
Athlete Timer Output .....	2
Log File Improvements .....	4
Combined Setup Screen .....	4
Multiple Jump Board Support .....	5
Appendix 1 .....	7

## Obtaining Lynx Products and Information

There are three ways to obtain Lynx products and information:

- » Go to the Lynx website (<http://www.finishlynx.com/>) and click the Products link
- » Call (978) 556-9780 and ask to speak with someone in sales, or
- » Send an email to...
  - » Domestic Sales: [domsales@finishlynx.com](mailto:domsales@finishlynx.com)
  - » International Sales: [intlsales@finishlynx.com](mailto:intlsales@finishlynx.com)

## Obtaining Technical Support

There are three ways to obtain technical support for Lynx products:

- » Go to the Lynx website (<http://www.finishlynx.com/>) and click the Support link
- » Call (978) 556-9780 and ask to speak with someone in tech support, or
- » Send an email to...
  - » Technical support: [support@finishlynx.com](mailto:support@finishlynx.com)



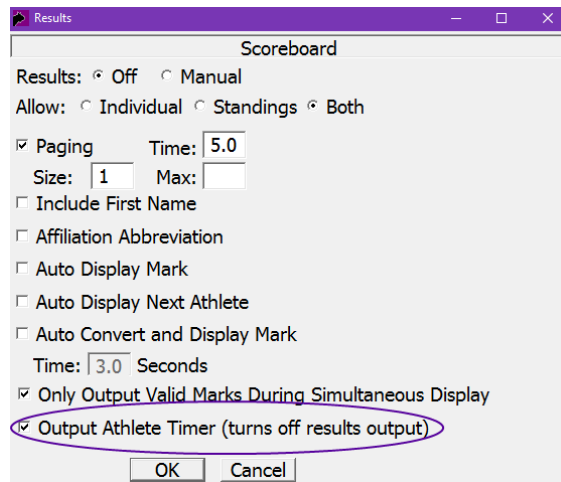
# What's New

## Athlete Timer Output

The **Athlete Timer** can now be sent to scoreboards.

- » To configure a scoreboard with the **Athlete Timer**:
1. Click **Options|Preferences**.
  2. Select the **Scoreboard** tab.
  3. Click **New**.
  4. Click **Configure...**
  5. Set the **Result Scripts: Metric**: to a compatible script with the athlete timer output (see "Compatible Scripts" on the facing page).
  6. Click **Settings...**
  7. Check the **Output Athlete Timer (turns off results output)** box.

*Scoreboard configuration screen*



8. Click **OK**.
9. Configure the **Communication** settings.
10. Click **OK** to close the **Options** dialog.

**NOTE:** When a Scoreboard object is configured to output the Athlete Timer, it cannot be used to display results (competitor information and marks).

- » To send the **Athlete Timer** data to scoreboards:
1. Click to expand the event and round from the main screen.
  2. Select the correct flight.
  3. Click on the athlete name from the **Athlete List** window.
  4. The **Athlete Timer** box starts automatically and the data output is sent to the scoreboard.

**NOTE:** To reset the Athlete Timer, simply click on the Athlete Timer box and then Yes.

## Compatible Scripts

Scripts included in the FieldLynx Scoreboard Plug-In 1.40 have been updated to work with the **Athlete Timer**.

- » To build your own **Athlete Timer** compatible scripts:
1. Create a new or open an existing FieldLynx scoreboard script (\*.lss) in Notepad.
  2. Add or modify a **;;TimeRunning** section configured for the scoreboard in use (copy from FinishLynx if relevant).
  3. Save the file and restart FieldLynx.
  4. Test and make any required script change to improve the format.

**TIP:** An example of the **;;TimeRunning** section from the FinishLynx uTabLED.lss script is shown in the figure below.

*;;TimeRunning section from uTabLED.lss*

```

uTabLED.lss - Notepad
File Edit Format View Help
; The format lines follow.
;;Initialization
; This is sent once to initialize the scoreboard.
; Line codes:
; \00 No variable
;
; send a reset
\00\X0=2\1b r\03\L0\U2\F2\R0\X\7F\&2\U0\02

;;TimeRunning
; This is sent approximately 10 times per second.
; Line codes:
; \00 No variable
; \01 Formatted time
; \02 Binary time in milliseconds (as a 4 byte little endian integer)
; Setting register[0] to 1 in a format line will cause that line and
; subsequent lines to only be sent once per second (when the second's
; digit changes) instead of approximately 10 times per second. Setting
; register[0] to 0 will resume normal operation for remaining lines.
;
; clear all
\00=0\X0=2\1b0Q\00\00\00\00\00\00\00\10\00\03\L0\U2\F2\R0\X\7F\&2\U0\02
; display "hh:mm:ss " , right aligned
\01=0\X0=2\1b0S\00\00\00\00\02501.125\04 \R0\03\L0\U2\F2\R0\X\7F\&2\U0\02

;;TimeStopped
; This is sent when the time is stopped by a beam break.
; Line codes are identical to the TimeRunning line codes.
;

```



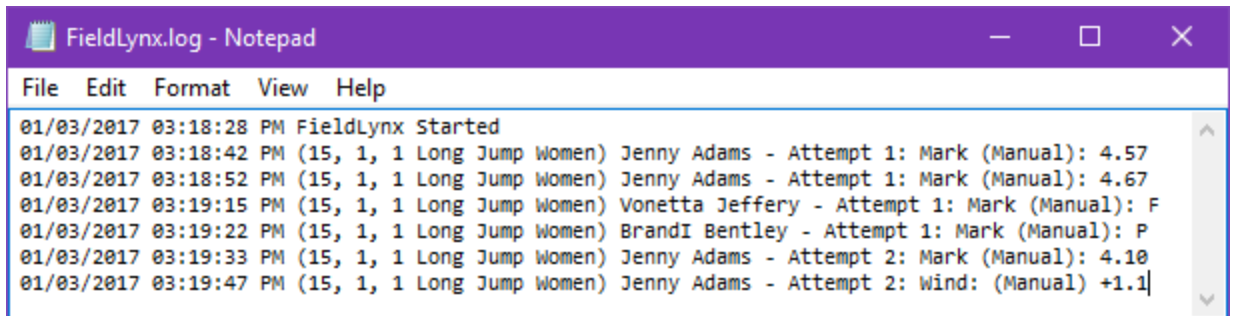
**NOTE:** FieldLynx 1.80 requires the FieldLynx Scoreboard Plug-In 1.40 to output the Athlete Timer. See the "Obtaining Lynx Products and Information" on page 1 for contact details.

## Log File Improvements

FieldLynx now logs every mark to the FieldLynx.log file with a time stamp, as soon as they are manually entered or received from LaserLynx. This can be useful in case a mark was erased by error and needs to be recovered, for example.

» To view the FieldLynx.log file:

1. Open Windows Explorer.
2. Click on Documents in the left pane.
3. Double-click the Lynx folder.
4. Double-click the FieldLynx (or FieldLynxLite) folder.
5. Open the FieldLynx.log file in Notepad.



```
FieldLynx.log - Notepad
File Edit Format View Help
01/03/2017 03:18:28 PM FieldLynx Started
01/03/2017 03:18:42 PM (15, 1, 1 Long Jump Women) Jenny Adams - Attempt 1: Mark (Manual): 4.57
01/03/2017 03:18:52 PM (15, 1, 1 Long Jump Women) Jenny Adams - Attempt 1: Mark (Manual): 4.67
01/03/2017 03:19:15 PM (15, 1, 1 Long Jump Women) Vonetta Jeffery - Attempt 1: Mark (Manual): F
01/03/2017 03:19:22 PM (15, 1, 1 Long Jump Women) BrandI Bentley - Attempt 1: Mark (Manual): P
01/03/2017 03:19:33 PM (15, 1, 1 Long Jump Women) Jenny Adams - Attempt 2: Mark (Manual): 4.10
01/03/2017 03:19:47 PM (15, 1, 1 Long Jump Women) Jenny Adams - Attempt 2: Wind: (Manual) +1.1
```

**NOTE:** This feature is also included in FieldLynxLite 1.80.

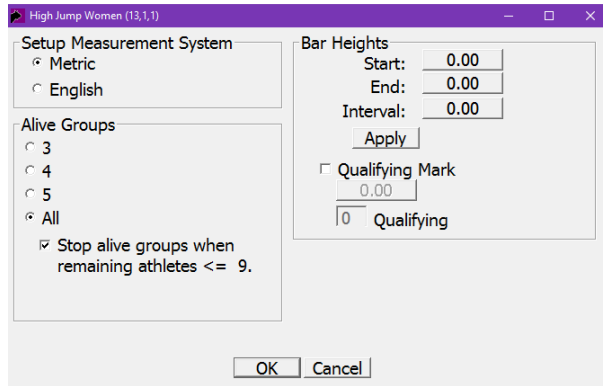
## Combined Setup Screen

The Event Setup screens have been combined to improve usability.

» To view the **Event Setup** screen:

1. Go to the **Athlete List** for the selected flight of an event.
2. Click **Event|Setup** (or the Event Setup icon).

Vertical Jump Event Setup screen



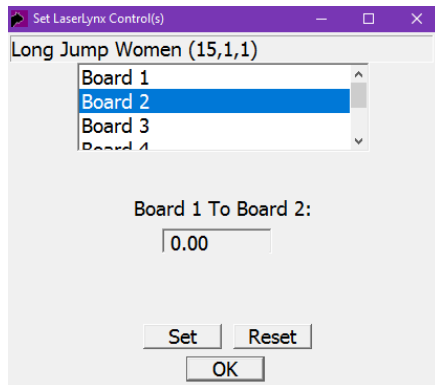
## Multiple Jump Board Support

FieldLynx allows the operator to specify the offset between boards for horizontal jumps using LaserLynx.

» To setup board offset with LaserLynx:

1. Go to the **Event Setup** screen.
2. Click **Set Control(s)**.
3. Measure the **Near/Far** values for **Board 1** (as usual).
4. Click to select **Board 2**.
5. Position the prism on the near side of board 2 (see "Appendix 1" on page 7) and sight with LaserLynx.
6. Click **Set** (wait for the LaserLynx measurement).
7. Repeat for all other boards.

LaserLynx Setup screen



### Board Name

The **Event Setup** screen for horizontal jumps allows the operator to customize the name of each board.



- » To rename one or more boards:
1. Go to the horizontal jumps **Event Setup** screen.
  2. Click a cell in the **Name** field of the **Board Setup** grid.
  3. Type to enter a new board name.
  4. Hit **Enter**.

*Horizontal Jump Event Setup screen*

Long Jump Women (15.1.1)

Setup Measurement System

Metric  
 English

Setup Attempts

Attempts (Qualify)  
 Athletes To Final  
 Attempts (Final)

Attempts

Qualifying Mark  
0.00

Qualifying Athletes

#	Name	Offset
1	Board 1	N/A
2	Free-text	0.000
3	Board 3	0.000
4	Board 4	0.000
5	Board 5	0.000
6	Board 6	0.000

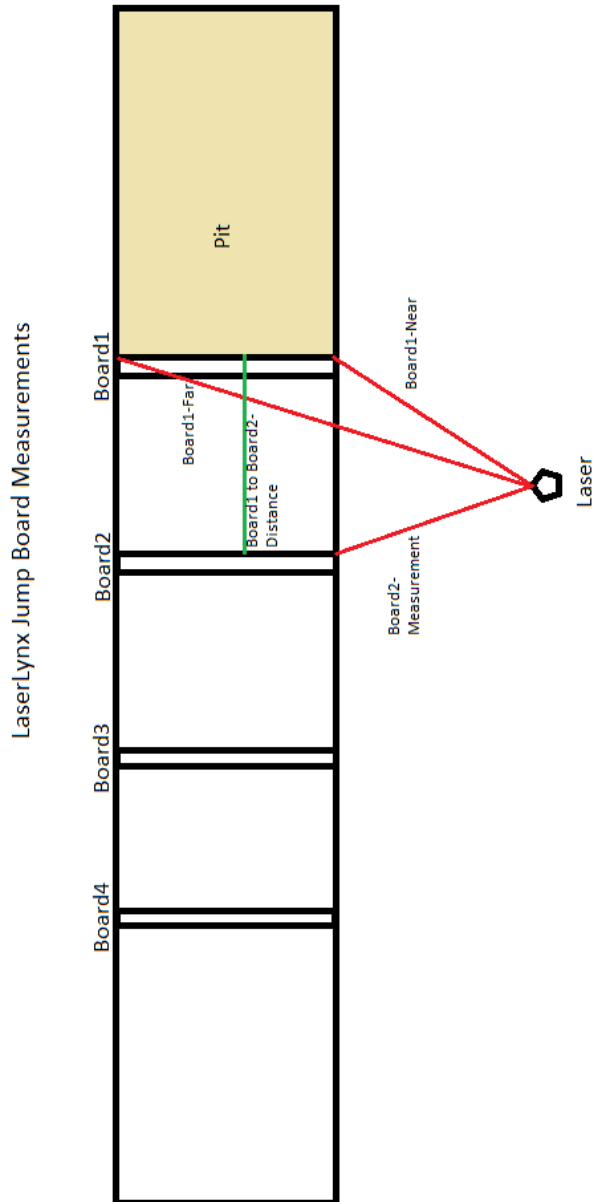
Setup LaserLynx

Set Control(s)

Test Measurement

OK Cancel

# Appendix 1





## **FieldLynx Version 1.70 Release Notes (03/01/2015)**

- Athlete timer now turns red at 2:00
- Athlete timer is now available for all athletes that are "active" (not just the "up" athlete)
- Added the ability select more than one event using the CTRL, SHIFT keys in the Load Event dialog
- Fixed Windows XP support
- Added Russian language file
- Added the ability to review all jumps/throws at anytime on one screen
- Added support for up to 6 jump boards for horizontal jumping events
- Added LaserLynx help bitmaps to help the user determine how to setup the controls
- Removed the ability to reorder after the 5th round of jumps (obsolete rule)

## **FieldLynx Version 1.50 Release Notes**

- FieldLynx now supports importing of vertical event results so the user can import results from another vertical event pit and combine those with a local copy to get accurate event placing.
- Fixed a bug in the manual wind entry that caused certain wind values to round incorrectly.

## FieldLynx Version 1.40 Release Notes

4/22/2013

- The ability to combine results from multiple pits into a final has been added. Requires NetExchange 3.20.

### Procedure:

1. Setup each device for "straight" attempts. For example, 3 attempts (instead of a jump-reorder-jump).
  2. Administer each flight on their independent devices.
  3. Send the results from each device back to NetExchange.
  4. Determine which device will administer the final and load the results from the other device onto this device.
  5. Select the round for this flight.
  6. The "Get Results" button now appears on the toolbar. Click on it.
  7. Select the flight number that was administered on the other device and click OK.
  8. The results from the other device will appear in the round lists as a completed flight.
  9. Adjust the setup for the flights in order to be able to create a Final.
  10. Go into the setup for any of the flights and change from straight attempts to jump-reorder-jump and enter the correct numbers for initial attempts, take to final and final attempts.
  11. Select the round for the event you are administering and click "Create Final". Follow the on-screen instructions.
- Logfile support has been added. For this version, it's only for LaserLynx circle radius and control changes.
  - The ability to take a "test measurement" with the laser has been added to the laser setup.
  - The resolution of the throwing circle radius has been increased from hundredths to thousandths when setup for metric measurement.
  - A warning message now appears if the user attempts to take a triangular measurement that will result in a negative distance. The distance will still be 0.
  - Verified installation and operation on Windows 7 64-bit and Windows 8 64-bit
  - Added a scoreboard option to control outputting non-valid (P,F,NM) marks to the scoreboard when outputting simultaneous metric and imperial marks.
  - Added support for metric to english conversion lookup with the TFN gold book. Now when a mark is converted by the formula and not the lookup table, likely because the mark is outside the lookup table range, the converted mark will display in bold red.
    - Added the ability to send all flights for a round on each throw/jump or round of jump/throws.
    - Fixed a bug with the lane # for FieldLynx added athletes (off by 1)
    - Fixed a bug with the ordering of results for the .lff files. Results were okay, but multi-flight events weren't ordered properly in the .lff file

## FieldLynx Version 1.32 Release Notes

5/24/2012

- Place is now output properly after each attempt in vertical events

- Added an option to allow marks to be send to the database/NetExchange after each throw/jump. So now, there are 3 choices: Never update, update after each throw, or update after each round/bar height change.
- Greatly reduced the laser/database transfer times.
- Now when individual marks are send back to the database during a vertical jumpoff, the actual jumps for the jump off are sent back in a “special” .lff file to the database. The format will be ee-rr-(hh+16384).lff. that way if for some reason a commentator, for example wants to follow the jumps, they will now be available. These will not make their way back to the final results however – only the resulting place from the jump off.
- “NW” was removed from the first jump of a triple or long jump when an athlete is shown as the next up athlete (they are on the runway). This only happened during the first jump for each athlete.
- The size and location of the FieldLynx window is now persistent. With the new ResultTV it can be painful to move and resize the window if multiple application restarts were necessary.

## **FieldLynx Version 1.31 Release Notes**

11/10/2011

- Support for the GoWin laser added.



# Contents

<b>Copyright Notice</b>	<b>3</b>
-------------------------	----------

---

<b>Introduction</b>	<b>5</b>
---------------------	----------

---

Obtaining Lynx products and information.....	5
Obtaining technical support.....	5

<b>FieldLynx Windows Version 1.24</b>	<b>7</b>
---------------------------------------	----------

---

Support for Windows Operating System.....	7
Before you begin.....	7
FieldLynx Windows installation instructions .....	8
FieldLynx Windows Plug-in installation instructions.....	8

<b>FieldLynx WinCE Version 1.20</b>	<b>9</b>
-------------------------------------	----------

---

Support for USATF, IAAF, and NCAA rule changes .....	9
Support for reordering competition after five rounds.....	9
Support for allowing six trials when eight or fewer competitors .....	9
FieldLynx WinCE Scoreboard Plug-in .....	10
New interface allows multiple scoreboard communication.....	10
Ability to send custom message to scoreboard.....	12
Ability to initialize or stop scoreboard from the FieldLynx main screen .....	13
Horizontal paging allowed .....	14

<b>FieldLynx WinCE Version 1.10</b>	<b>15</b>
-------------------------------------	-----------

---

New installation procedure .....	15
Before you begin.....	15
FieldLynx WinCE installation instructions .....	17
FieldLynx WinCE Plug-in installation instructions.....	21
Unicode support added.....	23
Ability to customize font display .....	24
FieldLynx result file (.LFF) format .....	26
.LFF file for horizontal jump or throw .....	26
.LFF file for high jump or pole vault .....	27

LaserLynx Plug-in 1.10 supports LaserLynx Auto .....28

**Installing the Microsoft WinCE Emulator 29**

---

Before you begin .....29  
Step 1: Start the Pocket PC emulator.....30  
Step 2: Install FieldLynx WinCE onto the emulator .....32  
Notes on using FieldLynx on a Pocket PC emulator.....33

**Index 35**

---

# Copyright Notice

Use of this product is governed by the Sales and License Agreement signed by you or your agent (the "Buyer"), Section 7a of which is reprinted here.

7a. Ownership of Software. Lynx System Developers, Inc. (Lynx) owns and retains all title, copyright, trademark, and other proprietary rights in the software, firmware and documentation provided with the software and firmware (collectively, "Software"). Buyer acknowledges that the Software is the confidential property of Lynx and the Buyer will not disclose the Software to any other person without Lynx's consent.

FinishLynx, EtherLynx, CyberScoreboard, ReacTime, and the FinishLynx logo are registered trademarks of Lynx System Developers, Inc.

AirCyber, AirLynx, ClerkLynx, CyberScoreboard, FieldLynx, InterLynx, LaserLynx, Live CyberScoreboard, Live CyberScoreboard Relay, Lynx Translation Tool, LynxPad, LynxTV, NetExchange Server, Office Client, ResultTV, SerialLynx, ScoreLynx, and VCPD are trademarks of Lynx System Developers, Inc.

Windows 95, Windows 98, Windows 2000, Windows ME, Windows NT, Windows XP, Windows CE (WinCE), and ActiveSync are registered trademarks of Microsoft Corp.

Palm OS, Palm Computing, Graffiti, and HotSync, are registered trademarks of Palm, Inc. Palm, the Palm logo, and the HotSync logo are trademarks of Palm, Inc.

Photoshop and Postscript are registered trademarks of Adobe Systems Incorporated.

All other trademarks are properties of their respective companies.

FieldLynx for Windows and the WinCE Operating System Release Notes

November 16, 2009

Copyright © 1992-2009 by Lynx System Developers, Inc.  
179 Ward Hill Avenue  
Haverhill, MA 01835  
(978) 556-9780  
<http://www.finishlynx.com>

All rights reserved.





# Introduction

This document describes the new features available in FieldLynx Windows version 1.24 and FieldLynx WinCE versions 1.20 and 1.10.

This document also provides instructions for *installing the Microsoft Windows Pocket PC Emulator* (see "Installing the Microsoft WinCE Emulator"), which allows you to run FieldLynx on a computer.

---

## Obtaining Lynx products and information

There are three ways to obtain Lynx products and information:

- Go to the *Lynx website* (<http://www.finishlynx.com/>) and click the **Products** link
- Call (978) 556-9780 and ask to speak with someone in sales, or
- Send an email to our *sales department* (<mailto:sales@finishlynx.com>).

---

## Obtaining technical support

There are three ways to obtain technical support for Lynx products:

- Go to the *Lynx website* (<http://www.finishlynx.com/>) and click the **Support** link
- Call (978) 556-9780 and ask to speak with someone in tech support, or
- Send an email to the *technical support department* (<mailto:support@finishlynx.com>).



# FieldLynx Windows Version 1.24

This is the initial Release of FieldLynx Windows (FL1\_24.exe) for running the FieldLynx software on the Windows OS platform.

---

## Support for Windows Operating System

The following installation instructions apply to FieldLynx Windows, as well as the LaserLynx, Scoreboard, and Wind Gauge Plug-ins that are used with FieldLynx Windows.

### Before you begin

Before completing the instructions in this section, you need the following:

- Computer running a Microsoft Windows operating system
- Access to the FieldLynx Windows installer file, **FL1\_24.exe**, available on a CD-ROM or by download from the **Lynx System Developers, Inc.** (<http://www.finishlynx.com/>) website. If you are installing the LaserLynx, Wind Gauge, or Scoreboard Plug-in for the FieldLynx Windows OS, then you need the following single file installers:
  - LaserLynx Plug-in: **FLLaser1\_13.exe**
  - Wind Plug-in: **FLWind1\_03.exe**
  - Scoreboard Plug-in: **FLSB1\_12.exe**

For more information on obtaining these products, **contact Lynx** (see "Obtaining Lynx products and information").

## FieldLynx Windows installation instructions

Follow these instructions to install **FieldLynx Windows** onto a computer running the Windows Operation System. Skip to *the next section* (see "FieldLynx Windows Plug-in installation instructions") to install a *FieldLynx Windows Plug-in* (LaserLynx, Scoreboard, or Wind) onto a computer that is running FieldLynx Windows.

### Run the FieldLynx installer on your computer

- 1 Double-click **FL1\_24.exe**, the FieldLynx Windows installer.
- 2 Follow the steps on your screen to complete the installation.

When the installation is complete, a folder named *FieldLynx Windows* is created on your computer, in the directory **C:\Program Files\Lynx\FieldLynx Windows**, unless you designated a different directory during the installation process.

## FieldLynx Windows Plug-in installation instructions

Follow these instructions to install **FieldLynx Windows Plug-ins** onto a computer running the Windows Operation System.

### Run the FieldLynx Plug-in installer on your computer

- 3 Double-click **FLSB1\_12.exe**, (**FLWind1\_12.exe**; **FLLaser1\_12.exe**) the FieldLynx Plug-in installer.
- 4 Follow the steps on your screen to complete the installation.
- 5 When the installation is complete, the plug-in files will be installed in the directory **C:\Program Files\Lynx\FieldLynx Windows**, unless you designated a different directory during the installation process.

# FieldLynx WinCE Version 1.20

This section describes the features that have been added to FieldLynx WinCE since the release of FieldLynx WinCE Version 1.0.

---

## Support for USATF, IAAF, and NCAA rule changes

FieldLynx now supports recent USATF, IAAF, and NCAA rule changes.

## Support for reordering competition after five rounds

FieldLynx has been modified to support:

- USATF Rule 180 (4)e, and
- IAAF Rule 180(5).

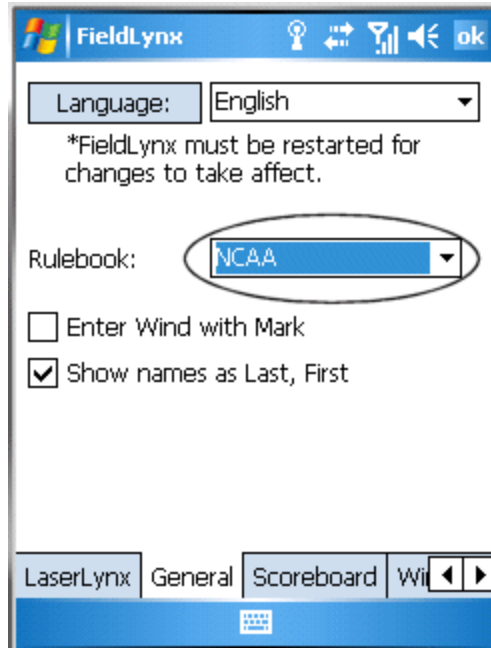
This means that if you have FieldLynx's **Rulebook** set to *USATF* or *IAAF*, FieldLynx notifies you that after five complete rounds of horizontal jumps, then the competition order is modified in the final round. The reordered competition order is based on the first five rounds of jumps.

## Support for allowing six trials when eight or fewer competitors

FieldLynx has been modified to support **NCAA Rule 6, Section 2, Article 1**.

This means that if you have FieldLynx's **Rulebook** set to *NCAA*, when there are eight or fewer competitors, each competitor is allowed six trials if one of the first three is attempted. When there are eight or fewer competitors, a competitor is advanced to the final, even if that competitor has no valid mark.

- 6 From the FieldLynx for WinCE main screen, tap **Menu** in the lower left corner of the screen.
- 7 Tap **Options | Preferences....** The General Preferences screen appears.
- 8 Tap the pick list next to **Rulebook:**.



- 9 Tap to select either **NCAA**, **USATF** or **IAAF** from the pick list.
- 10 Tap **ok** in the upper right corner of the screen to return to the FieldLynx main screen.

---

## FieldLynx WinCE Scoreboard Plug-in

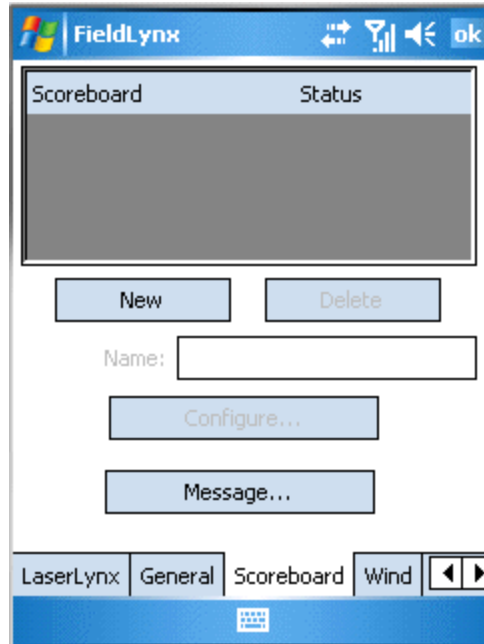
### New interface allows multiple scoreboard communication

FieldLynx has a new scoreboard interface that allows you to create multiple scoreboards to which FieldLynx can send data simultaneously. The new interface works similarly to the scoreboard interface available in FinishLynx® and in LynxPad™.

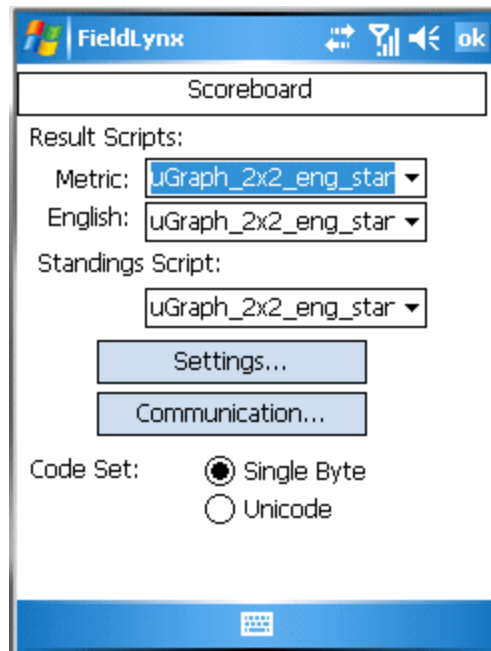
➤ **To access FieldLynx's scoreboard interface:**

- 1 Start at the FieldLynx main screen.

- 2 Tap **Menu** in the lower left corner of the screen, and then tap **Options | Preferences...** The Preferences screen appears.
- 3 Tap the **Scoreboard** tab. The scoreboard interface appears.



- 4 To add a scoreboard, click the **New** button. A scoreboard is added.
- 5 Click the **Configure** button. The **Scoreboard** screen appears, which allows you to configure the settings for that scoreboard, including selecting a script and setting the COM port or network settings.

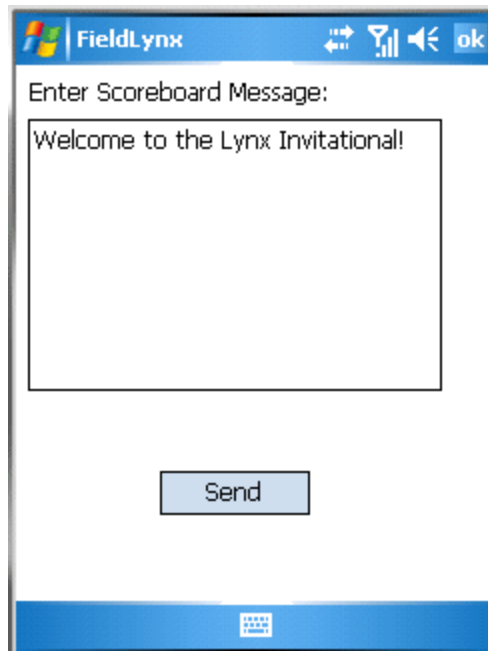


- 6 When you are done configuring the scoreboard, tap **ok** to return to the FieldLynx main screen. You must now restart FieldLynx to enable the scoreboards. To exit FieldLynx, tap **Menu** in the lower left corner of the screen and then tap **File | Exit**. The scoreboards are enabled after you restart FieldLynx.

## Ability to send custom message to scoreboard

You can send a custom message to the scoreboard(s) connected to FieldLynx by following these instructions:

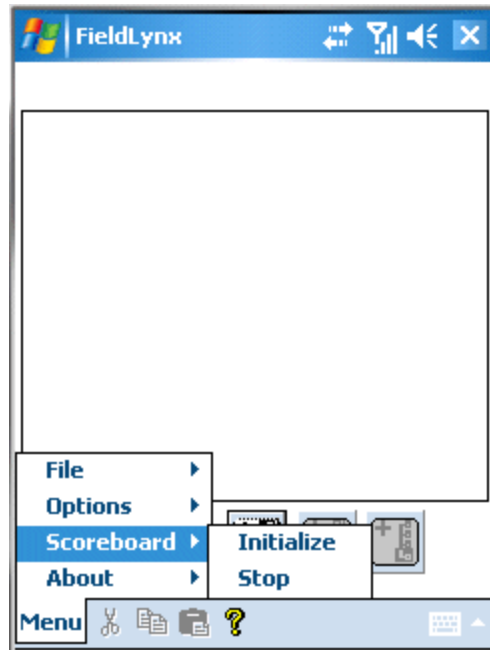
- 1 Start at the FieldLynx main screen. Tap **Menu** in the lower left corner, and then tap **Options | Preferences...** The Preferences screen appears.
- 2 Tap the **Scoreboard** tab. The scoreboard interface appears.
- 3 Tap the **Message...** button.
- 4 Type your message in the **Enter Scoreboard Message:** text box. When finished, click **Send** to send the message to the scoreboard(s).





## Ability to initialize or stop scoreboard from the FieldLynx main screen

You can initialize or stop sending data to the scoreboard(s) connected to FieldLynx from the FieldLynx main screen.



➤ *To initialize the scoreboard(s):*

From the FieldLynx main screen, tap **Menu** in the lower left corner. Then, tap **Scoreboard | Initialize**.

➤ *To stop sending data to the scoreboard(s):*

From the FieldLynx main screen, tap **Menu** in the lower left corner. Then, tap **Scoreboard | Stop**.

## Horizontal paging allowed

You can now create horizontal paging in the Lynx Scoreboard Script (LSS) files, allowing you to display more than one page of information for each vertical page of results. This option is helpful when sending a great deal of information to a short scoreboard.

---

**Note:** If you are running FieldLynx WinCE version 1.20, you *must* use FieldLynx WinCE Scoreboard Plug-in version 1.10 or greater.

FieldLynx WinCE Scoreboard Plug-in versions 1.0 and 1.01 do *not* work with FieldLynx for the WinCE version 1.20.

---

# FieldLynx WinCE Version 1.10

---

## New installation procedure

The following installation instructions apply to FieldLynx WinCE, as well as the LaserLynx, Scoreboard, and Wind Gauge Plug-ins that are used with FieldLynx WinCE.

### Before you begin

Before completing the instructions in this section, you need the following:

- computer running a Microsoft Windows operating system
- ActiveSync® software running on your computer
- ActiveSync cable connecting the computer and a handheld device running Windows CE Pocket PC 2003 or later, and
- Access to the FieldLynx WinCE installer file, **FLPPC1\_20.exe**, available on a CD-ROM or by download from the *Lynx System Developers, Inc.* (<http://www.finishlynx.com/>) website. If you are installing the LaserLynx, Wind Gauge, or Scoreboard Plug-in for the FieldLynx WinCE, then you need the following single file installers:
  - LaserLynx Plug-in: **FLPPCLL1\_11.exe**
  - Wind Plug-in: **FLPPCWG1\_02.exe**
  - Scoreboard Plug-in: **FLPPCSB1\_10.exe**
- For more information on obtaining these products, *contact Lynx* (see "Obtaining Lynx products and information").



## FieldLynx WinCE installation instructions

Follow these instructions to install **FieldLynx WinCE** onto a handheld device. Skip to *the next section* (see "FieldLynx WinCE Plug-in installation instructions") to install a *FieldLynx WinCE Plug-in* (LaserLynx, Scoreboard, or Wind) onto a handheld device that is running FieldLynx WinCE.

### Part 1: Run the FieldLynx installer on your computer

- 5 Double-click **FLPPC1\_20.exe**, the FieldLynx installer.
- 6 Follow the steps on your screen to complete the installation.

When the installation is complete, a folder named *FieldLynx WinCE* is created on your computer, in the directory **C:\Program Files\Lynx\FieldLynx WinCE**, unless you designated a different directory during the installation process.

The FieldLynx WinCE folder contains the WinCE single file installer *FieldLynx.CAB*. Later, in Part 3 of these installation instructions, you are instructed how to move **FieldLynx.CAB** from this folder to your handheld device, so that FieldLynx can be installed there.

### Part 2: Copy the FieldLynx.CAB file


- 1 Navigate to the **FieldLynx WinCE** directory.

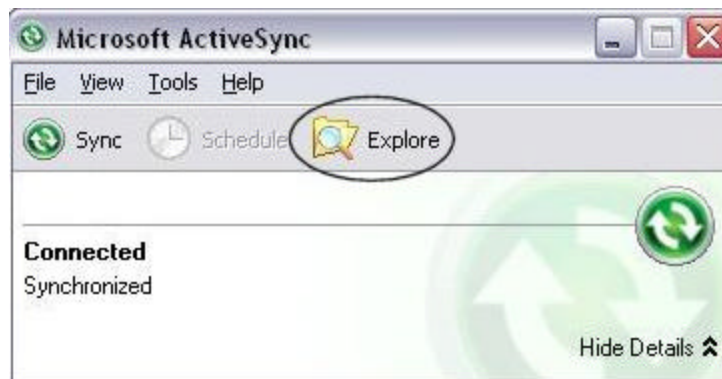
**Reminder:** By default, FieldLynx WinCE is placed into **C:\Program Files\Lynx\FieldLynx WinCE**. You may have placed FieldLynx WinCE some place else during the installation process. If so, navigate to that alternate location.

- 2 Double-click on the **FieldLynx WinCE** folder to open it. Inside the folder, you should see the **FieldLynx.CAB** file.
- 3 Right-click on the **FieldLynx.CAB** file and then click to select **Copy**.

### Part 3: Move the FieldLynx.CAB to the Mobile-based Device directory



- 1 Double-click on , the **ActiveSync** icon, in the system tray. The **Microsoft ActiveSync** dialog appears.
- 2 In the Microsoft ActiveSync dialog, click **Explore**.

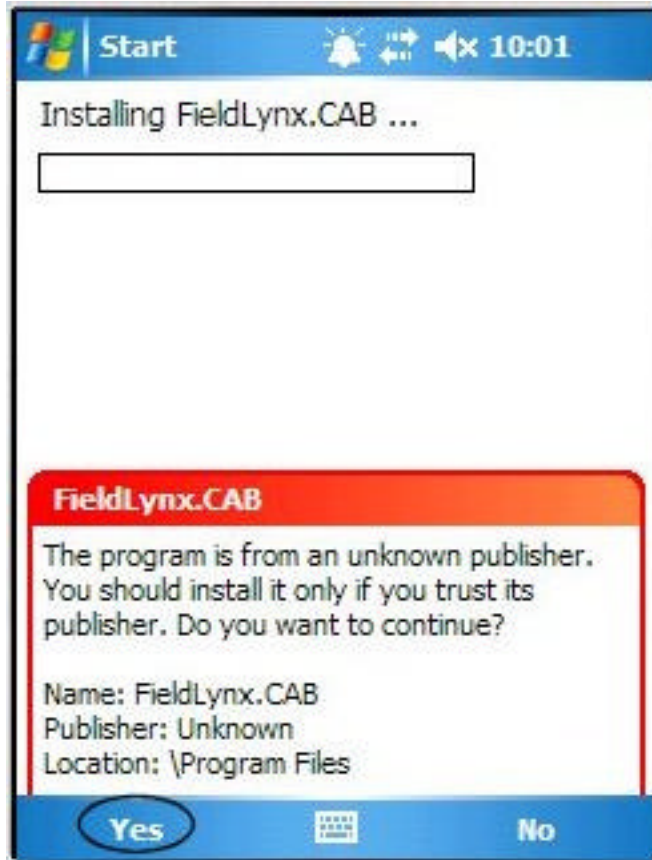


- 3 Now, using the Microsoft ActiveSync Explore feature, navigate to **My Computer | Mobile Device**. Double-click **Mobile Device**.
- 4 Double-click **My Windows Mobile-based Device**.
- 5 Double-click **Program Files** and then paste the FieldLynx.CAB file into the Program Files directory.

### Part 4: Run the FieldLynx installer on the handheld device

- 1 Turn on your handheld device and then tap **Start** in the top left corner of the screen.
- 2 Tap **File Explorer**.
- 3 Verify that the drop-down list at the top of the screen says **My Device**. If not, tap on the drop-down list at the top of the screen, and then tap **My Device**.
- 4 Tap **Program Files** and then tap the **FieldLynx.CAB** file to begin the installation.

- 5 When you receive a message warning you that FieldLynx.CAB is from an unknown publisher, tap **Yes** in the lower left corner of the screen to continue.



- 6 When the installation is complete, tap **Start**, and then tap **Programs**. Tap **FieldLynx**. The next time that you run FieldLynx, the FieldLynx application icon appears in the Start menu.





## FieldLynx WinCE Plug-in installation instructions

The following instructions explain how to install a FieldLynx WinCE Plug-in (LaserLynx, Scoreboard, or Wind Gauge) onto a handheld device running FieldLynx WinCE. Go back to the *previous section* (see "FieldLynx WinCE installation instructions") if you want to install FieldLynx WinCE.

### Part 1: Run the Plug-in installer on your computer

- 1 Double-click the corresponding FieldLynx Plug-in installer, as follows:
  - FLPPCLL1\_11.exe - LaserLynx
  - FLPPCWG1\_02.exe - Wind, or
  - FLPPCSB1\_10.exe - Scoreboard.
- 2 Follow the steps on your screen to complete the installation.

When the installation is complete, a folder named *Plugins* is created on your computer, in the directory `C:\Program Files\Lynx\FieldLynx WinCE\Plugins`, unless you designated a different directory during the installation process.

The `FieldLynx WinCE\Plugins\LaserLynx` or `Scoreboard` or `Wind` folder contains the WinCE single file installer *FL LaserLynx.CAB*, or *FL Scoreboard.CAB*, or *FL Wind.CAB*. Later, in Part 3 of these installation instructions, you are instructed how to move the .CAB file from this folder to your handheld device, so that the FieldLynx Plug-in can be installed there.

### Part 2: Copy the Plug-in .CAB file


- 1 Navigate to the `FieldLynx WinCE\Plugins` directory.

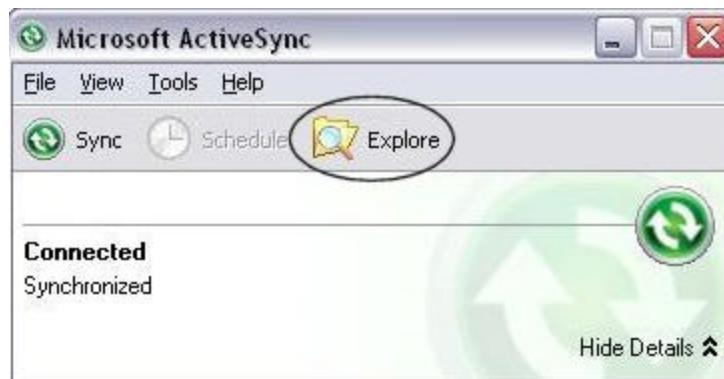
**Reminder:** By default, the FieldLynx Plug-in is placed into `C:\Program Files\Lynx\FieldLynx WinCE\Plugins`. You may have placed the FieldLynx Plug-in some place else during the installation process. If so, navigate to that alternate location.

- 2 Double-click on the corresponding FieldLynx Plug-in folder to open it. Inside the folder, you should see the corresponding .CAB file.
- 3 Right-click on the .CAB file and then click to select **Copy**.

### Part 3: Move the .CAB file to the Mobile-based Device directory



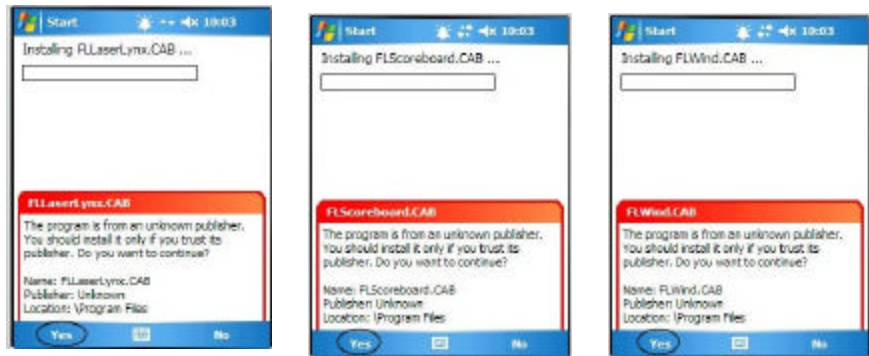
- 1 Double-click on , the **ActiveSync** icon, in the system tray. The **Microsoft ActiveSync** dialog appears.
- 2 In the Microsoft ActiveSync dialog, click **Explore**.



- 3 Now, using the Microsoft ActiveSync Explore feature, navigate to **My Computer | Mobile Device**. Double-click **Mobile Device**.
- 4 Double-click **My Windows Mobile-based Device**.
- 5 Double-click **Program Files** and then paste the .CAB file into the Program Files directory.

### Part 4: Run the Plug-in installer on the handheld device

- 1 Turn on your handheld device and then tap **Start** in the top left corner of the screen.
- 2 Tap **File Explorer**.
- 3 Verify that the drop-down list at the top of the screen says **My Device**. If not, tap on the drop-down list at the top of the screen, and then tap **My Device**.
- 4 Tap **Program Files** and then tap the .CAB file to begin the installation.
- 5 When you receive a message warning you that .CAB is from an unknown publisher, tap **Yes** in the lower left corner of the screen to continue. (Refer to the corresponding warning images on the next page.)



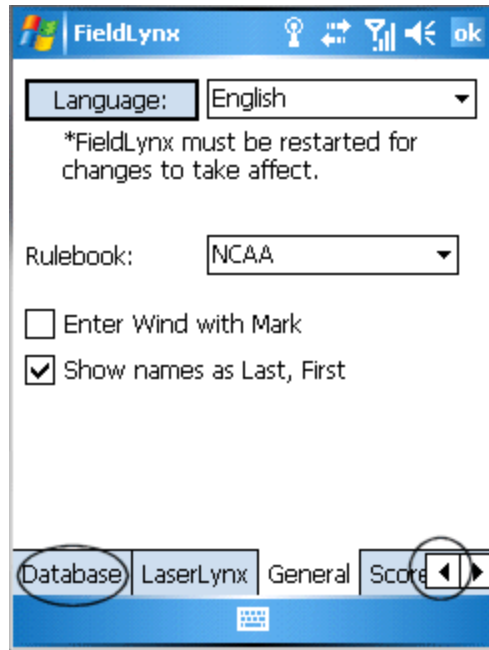
---

## Unicode support added

FieldLynx WinCE now supports Unicode data, which allows you to use it with languages such as Chinese, Korean, and Russian. Generally, set FieldLynx WinCE to use Unicode with the following:

- some Eastern European languages
  - Middle Eastern languages, and
  - Asian languages.
- *To enable the Unicode setting:*
- 1 From the FieldLynx main screen, tap **Menu** from the lower left corner of the Pocket PC screen.

- 2 Tap **Options** and then tap **Preferences...**
- 3 Tap the **Database** tab near the bottom of the screen. If you do not see the Database tab, tap the left arrow. The screen scrolls, and the Database tab appears.



- 4 Tap the **Unicode** radio button.
- 5 Tap **ok** to return to the FieldLynx main screen.

## Ability to customize font display

FieldLynx for Windows CE allows you to customize the font display, which is helpful if you are using FieldLynx with a non-standard language.

### ➤ *Before you begin*

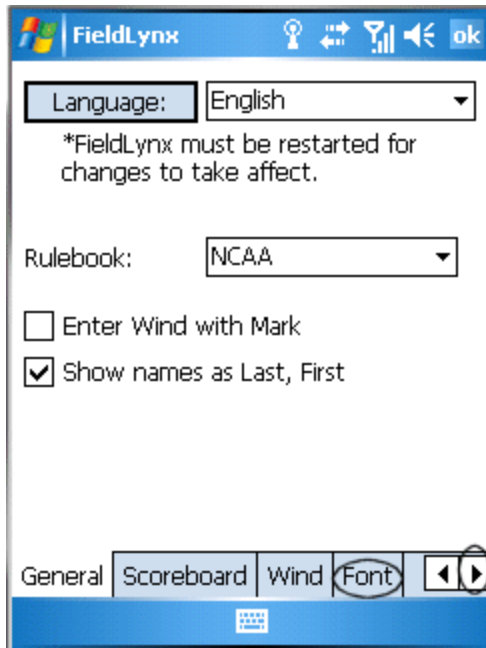
Copy the font you want to use from your computer to the Pocket PC.

You can do this using Microsoft ActiveSync to navigate to the **\\Windows\\Fonts\\** directory on your computer. When you find the font that you want to use, copy it. Then, navigate to the **\\Windows\\Fonts** directory on the Pocket PC and paste the font there.

### ➤ *Instructions*

- 1 From the FieldLynx main screen, tap **Menu** from the lower left corner of the handheld device.

- 2 Tap **Options** and then tap **Preferences...**
- 3 Tap **Font** on the lower part of the screen. If **Font** is not displayed, tap the right arrow key near the bottom of the screen. The screen scrolls, and **Font** displays.



- 4 From the **Font:** pick list, tap to select the font you just placed into the handheld device's **Windows\Fonts** directory.
- 5 Tap **ok** to exit the screen.
- 6 Exit FieldLynx by tapping **Menu** from the lower left corner, and then tap **File | Exit**
- 7 When you restart FieldLynx, it displays in the custom font that you just selected.

---

## FieldLynx result file (.LFF) format

FieldLynx, when used with NetExchange™, generates a comma-separated file on the NetExchange computer. This comma-separated file, known as a .LFF file, contains the results information for a FieldLynx administered field event.

This section describes the contents of the results (.LFF) file.

---

**Note:** For English, the feet separator (') is a hyphen (-). When the inches are less than 10 (0-9, inclusive), there is a leading 0, so the inches will always be 2 digits. Fraction of inches is expressed in decimal (.25, .50, .75).

---

### .LFF file for horizontal jump or throw

```
event #,round #,flight #,event name,measurement system<CR><LF>
flight place,athlete ID,compete position,event place,last name,first
name,affiliation,mark,wind,mark,wind, ...<CR><LF>
flight place,athlete ID,compete position,event place,last name,first
name,affiliation,mark,wind,mark,wind, ...<CR><LF>
```

➤ **Metric sample:**

```
5,1,1,Long Jump Women,Metric
1,1250,1,1,Barnes,Megan,Virginia Tech,2.20,-2.1
2,1073,2,2,Knight,Takiyah,Saint John's University,F,-0.0
```

➤ **English sample:**

```
5,1,1,Long Jump Women,English
1,1250,1,1,Barnes,Megan,Virginia Tech,19-11,-2.1
2,1073,2,2,Knight,Takiyah,Saint John's University,19-05.75,-0.0
```

## .LFF file for high jump or pole vault

```
event,round,flight,event name,measurement system,SH,<comma separated
bar height progression>,EH<CR><LF>
flight place,athlete ID,compete position,event place,last name,first
name,affiliation,marks for height #1,marks for height #2,...<CR><LF>
flight place,athlete ID,compete position,event place,last name,first
name,affiliation,marks for height #1,marks for height #2,...<CR><LF>
```

### ➤ *Metric sample:*

```
10,1,1,High Jump
Women,Metric,SH,1.00,1.06,1.12,1.18,1.24,1.30,1.36,1.42,1.48,1.54,1.60,
1.66,1.72,1.78,1.84,1.90,1.96,EH
1,462,1,1,Gyorffy,Dora,Harvard University,PPP,PPP
2,783,14,2,Regan,Jennifer,New Hampshire,DNS
```

### ➤ *English sample:*

```
10,1,1,High Jump Women,Metric,SH,5-00,5-02,5-04,5-06,5-07.75,5-09,5-
10,EH
1,462,1,1,Gyorffy,Dora,Harvard University,PPP,XO
2,783,14,2,Regan,Jennifer,New Hampshire,DNS
```

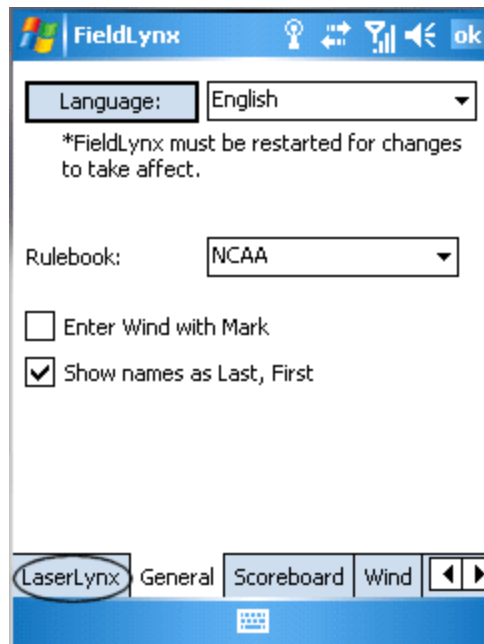
---

## LaserLynx Plug-in 1.10 supports LaserLynx Auto

The new LaserLynx Plug-in 1.10 for use with FieldLynx WinCE supports the LaserLynx Auto laser.

The installation for the LaserLynx Plug-in is the same as the *installation instructions* (see "New installation procedure") provided for FieldLynx for WinCE.

- *To set up the LaserLynx Plug-in to work with the LaserLynx Auto laser:*
- 1 Access the LaserLynx Plug-in. Do this from FieldLynx by tapping **Menu | Options | Preferences...**
  - 2 Tap the **LaserLynx** tab near the bottom of the screen.



- 3 From the **Laser**: pick list, tap **LaserLynx Auto**.
- 4 Tap **ok** to return to the FieldLynx main screen.



# Installing the Microsoft WinCE Emulator

Using the Microsoft WinCE emulator, you can run FieldLynx on a computer, rather than on a handheld device.

---

## Before you begin

These instructions assume that you have done the following:

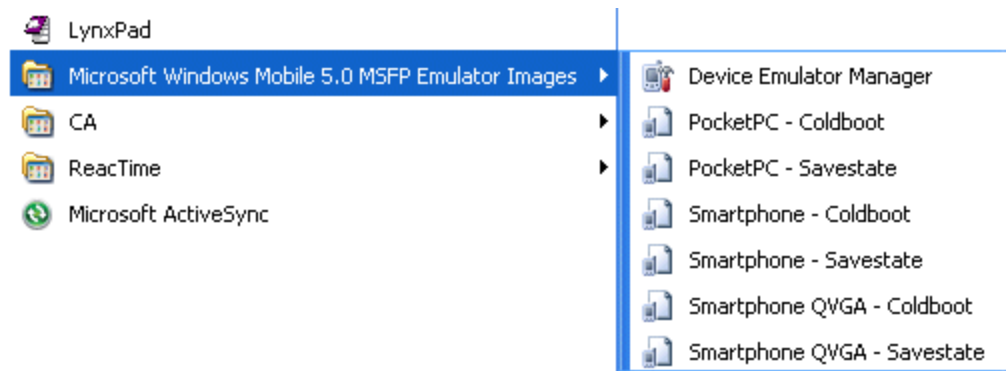
- Downloaded the Microsoft Device Emulator. You can do this by visiting the *Microsoft web page* (<http://www.microsoft.com/>) and then searching for "Microsoft Device Emulator V2."
- Downloaded the most recent version of Microsoft ActiveSync. You can do this also by visiting the *Microsoft web page* (<http://www.microsoft.com/>) and searching for the most recent "ActiveSync download."
- Stored the **FieldLynx.CAB** file some place on your computer.

---

## Step 1: Start the Pocket PC emulator

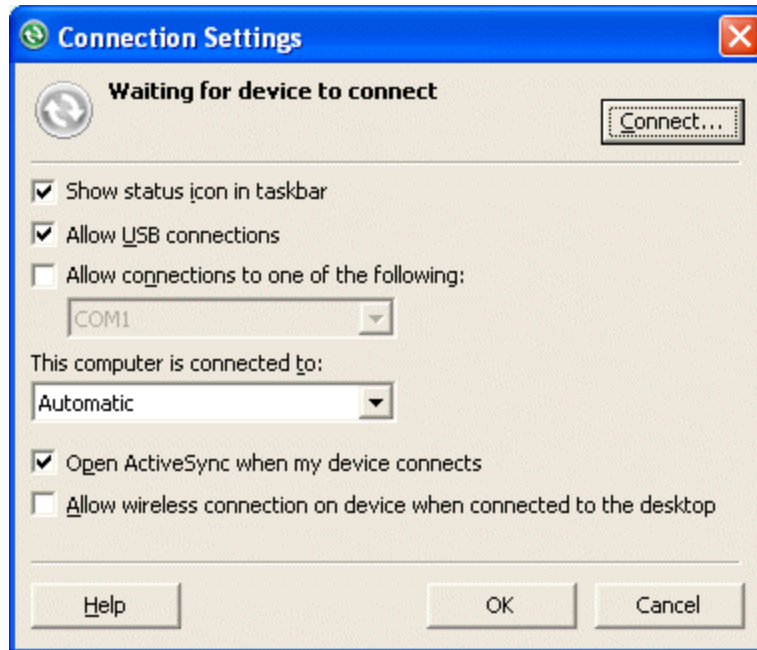
After you have downloaded the Microsoft Device Emulator, follow these instructions to start the Pocket PC emulator.

- 1 Click the Microsoft Windows **Start** button and select **All Programs**.
- 2 Hover your mouse over **Microsoft Windows Mobile 5.0 MSFP Emulator Images**. A sub-menu appears.



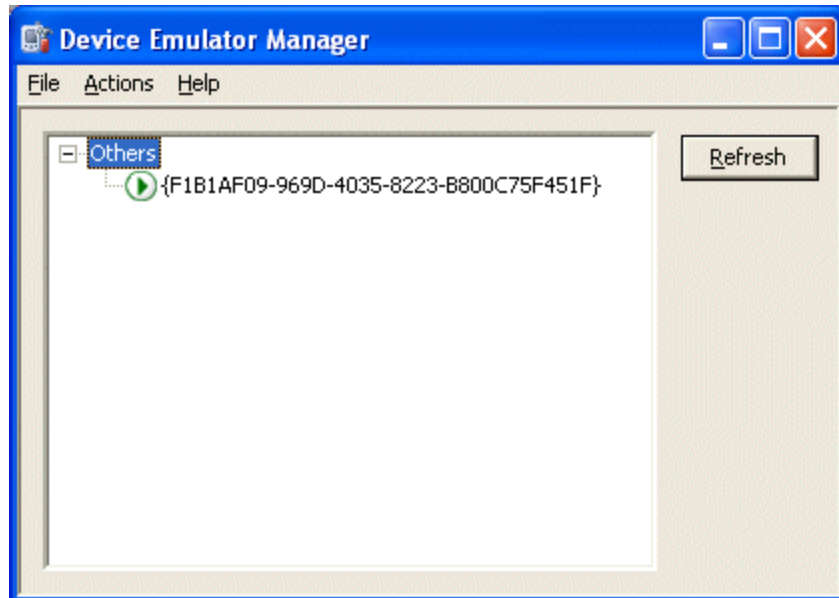
- 3 Click to select **Device Emulator Manager**. The Device Emulator Manager dialog appears.
- 4 Click to select **PocketPC - Coldboot** from the sub-menu. The **PocketPC - WM 5.0 MSFP** screen appears.

- 5 Also from the Microsoft Windows All Programs menu, click to select **Microsoft ActiveSync**. The Microsoft ActiveSync dialog appears.
- 6 From the ActiveSync dialog, click **File** and then click **Connection Settings....** The **Connection Settings** dialog appears.



- 7 Select the **Allow connections to one of the following** checkbox. Then, from the drop-down list, click to select **DMA**.

- 8 Click **OK**.
- 9 From the **Device Emulator Manager** dialog, click the **Refresh** button. A long string of numbers and letters appears under “Others,” and the PocketPC emulator activates.



- 10 Right click on the string of numbers and letters in the Device Emulator Manager dialog and then select **Cradle**. When the Synchronization Setup Wizard appears, click **Cancel**. The Microsoft ActiveSync dialog now shows that you are **Connected**.

---

## Step 2: Install FieldLynx WinCE onto the emulator

- 1 From the Microsoft ActiveSync dialog, click **Explore**. The Mobile Device dialog appears, allowing you to view the available Emulator files.
- 2 Double-click the **My Windows-Based Mobile Device** icon.
- 3 Double-click **Program Files**.
- 4 Copy and paste **FieldLynx.CAB** and any other \*.CAB files you want (such as **FLScoreboard.CAB**) into the Program Files directory. If a **File Conversion** dialog appears, click **OK**.
- 5 From the PocketPC Emulator, click **Start** from the top left corner and then click **Programs**.
- 6 At the Programs screen, click the **File Explorer** icon.

- 7 Click **My Documents** near the top left of the screen, and then click **My Device**.
- 8 Click **Program Files**. The \*.CAB files that you copied and pasted earlier are visible.
- 9 Click on a \*.CAB file and wait while it installs. Click **ok** in the top right corner of the screen to return to the previous menu.

---

## Notes on using FieldLynx on a Pocket PC emulator

- Use NetExchange to install an event onto FieldLynx running on the Pocket PC emulator. Make sure that the Pocket PC emulator status is set to "Cradled" in the DEM. Also, make sure that the IP address for your computer matches the IP address for the computer that NetExchange is running on.
- If you try to send data to the scoreboard via a serial port, make sure that you configure the serial port in the emulator.
  1. In the extreme top left corner of the emulator, click **File**.
  2. Click **Configure....** The **Emulator Properties** dialog appears.
  3. Click the **Peripherals** tab.
  4. From the **Serial Port 0** drop-down list, click to select the correct mapping for the COM port on your computer.
- You can also send FieldLynx data from the Pocket PC emulator to a hyperterminal program. To do this, you must loop back the serial port into another serial port using a null modem cable. If your computer has only one serial port, you need a *USB to Serial Converter 1 Port* connector cable. This cable is *available for purchase* (see "Obtaining Lynx products and information") from Lynx System Developers, Inc.



# Index

.

.LFF file for high jump or pole vault • 26  
 .LFF file for horizontal jump or throw • 25

## A

Ability to customize font display • 22  
 Ability to initialize or stop scoreboard from the  
 FieldLynx main screen • 11  
 Ability to send custom message to scoreboard •  
 10

## B

Before you begin • 13, 29

## C

Copyright Notice • 3

## F

FieldLynx result file (.LFF) format • 24  
 FieldLynx WinCE installation instructions • 15,  
 19  
 FieldLynx WinCE Plug-in installation  
 instructions • 15, 19  
 FieldLynx WinCE Scoreboard Plug-in • 8  
 FieldLynx WinCE Version 1.10 • 13  
 FieldLynx WinCE Version 1.20 • 7

## H

Horizontal paging allowed • 12

## I

Installing the Microsoft WinCE Emulator • 5, 29  
 Introduction • 5

## L

LaserLynx Plug-in 1.10 supports LaserLynx  
 Auto • 27

## N

New installation procedure • 13, 27

New interface allows multiple scoreboard  
 communication • 8

Notes on using FieldLynx on a Pocket PC  
 emulator • 33

## O

Obtaining Lynx products and information • 5,  
 13, 33

Obtaining technical support • 5

## P

### Part 1

Run the FieldLynx installer on your computer  
 • 15

Run the Plug-in installer on your computer •  
 19

### Part 2

Copy the FieldLynx.CAB file • 15

Copy the Plug-in .CAB file • 19

### Part 3

Move the .CAB file to the Mobile-based  
 Device directory • 20

Move the FieldLynx.CAB to the Mobile-  
 based Device directory • 16

### Part 4

Run the FieldLynx installer on the handheld  
 device • 16

Run the Plug-in installer on the handheld  
 device • 20

## S

Setting the Rulebook • 8

### Step 1

Start the Pocket PC emulator • 30

### Step 2

Install FieldLynx WinCE onto the emulator •  
 32

Support for allowing six trials when eight or  
 fewer competitors • 7

Support for reordering competition after five  
 rounds • 7

Support for USATF, IAAF, and NCAA rule  
 changes • 7

## U

Unicode support added • 21