

## World's Fastest Photo Finish Technology

The **EtherLynx Professional** digital Photo finish camera can take pictures as fast as 10,000 times a second. This brings a previously unknown level of accuracy to digital photofinish equipment.

Recent applications of this field-proven technology include Cycling and a variety of Motorsports such as Car, Power Boat and Motorcycle racing – among others. It is perfectly suited for use either as a standalone system for results production, or as a component of a transponder-based system. When used in conjunction with transponders, **EtherLynx PRO** provides precise high-definition images that are reviewable and which provide proof of exact order of finish and lap times, as well as providing coverage for instances of transponder failure, loss or omission.

Coupled with the ability to transmit image data wirelessly in real time, and to scan at up to 10,000 frames a second from a single line sensor, the **EtherLynx PRO** range of cameras incorporates the ability to perform digital zoom functions, accommodate both Nikon-compatible lenses and c-mount lenses, and compress data for real time transmission of very high resolution images with no loss of quality.

The FinishLynx software ensures data security and processes race images to hard disk instantly to safeguard image integrity. FinishLynx optional software plug-ins allow automatic capture of every participant on every lap as well as acquisition of lap times from image and from timing devices such as transponders and external lap timers. In Motor Sports, *LapTime* assures that fair and accurate qualification time is assigned to each participant while FinishLynx promptly updates the leader board and information systems.

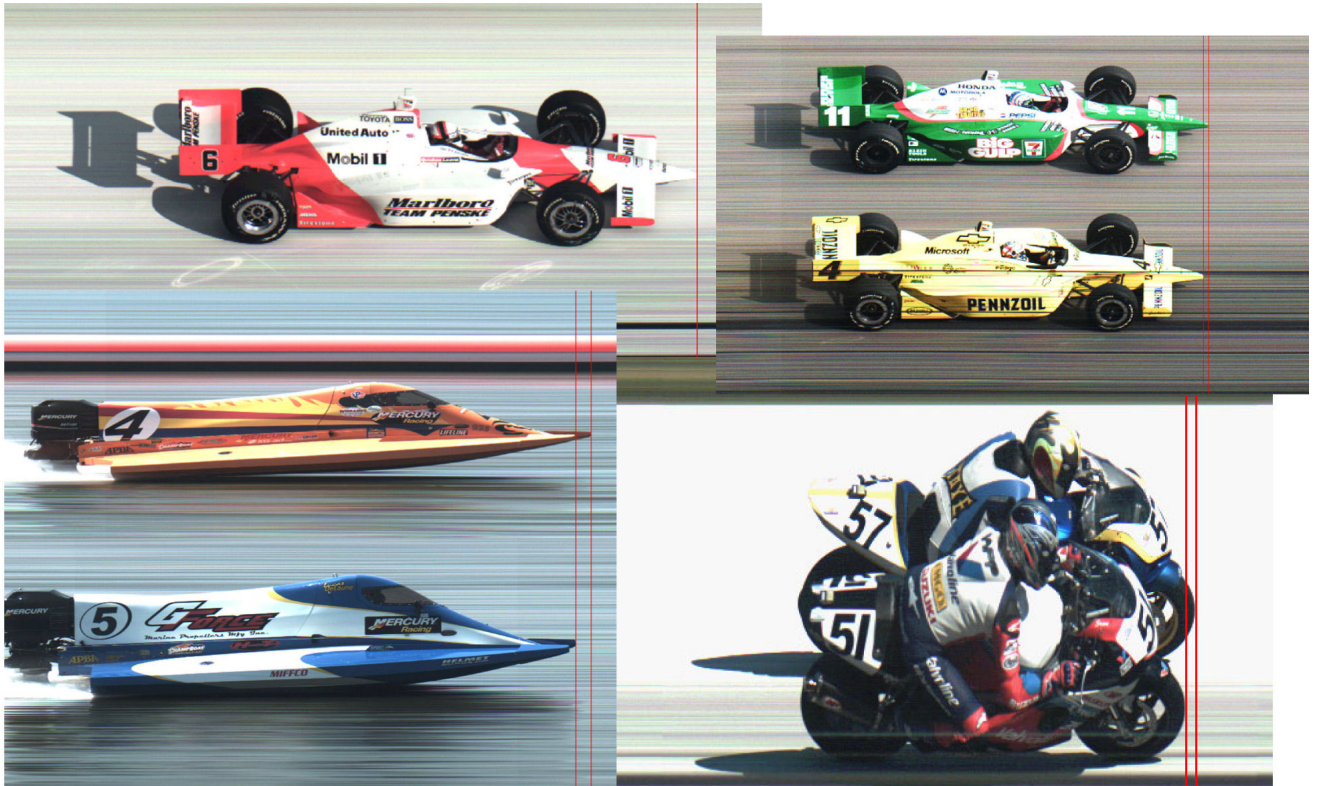


EtherLynx Professional

## Technical Specifications

Model:	Professional 3K	Professional 5K	Professional 10K
Typical sports:	Athletics – Rowing...	Cycling – Horse Racing	Motorsports
Max Frame Rate:	3,000 f/s	5,000 f/s	10,000 f/s
Time Resolution:	3.3/10,000 sec	2/10,000 sec	1/10,000 sec
Sensor Type:	Single Line CCD		
Max Pixels:	1350 (Standard) ~ 4000 (Optional Digital Zoom)		
Digital Zoom:	up to 4x (Standard) ~ up to 12x (Optional Digital Zoom)		
Gamma Correction:	In Hardware		
Image Compression:	Real-Time Lossless. Typically >5x		
Network Connectivity:	100Mbps Ethernet (802.3) Optional Wireless Ethernet 11- 54Mbps Wi-Fi (802.11b/g)		
Time Base:	1ppm Temperature Compensated Crystal Oscillator		
Lens Mount:	C-mount or F-mount		
Through the Lens Viewer:	Optional on F-mounts		
Remote Control Lens:	Optional on C-mount (zoom/focus/iris) or F-mount (iris only)		
Power Input:	12VDC or 100-240VAC with included adaptor		
Remote Control Positioner:	Optional on all models		
Options	Auto-Capture, LapTime, Remote Control Protocol, Virtual Photo Cell.		
Physical (w/o lens)	size: 20cm x 7.5cm x 15cm	weight: 2.8kg	
Operating Temp. Range	0° to 50C		

## Application Images



## FinishLynx Software

- Secure File System with enhanced file sharing permissions
- Control of multiple cameras simultaneously, mixing B/W and Color
- Multiple Simultaneous Camera Views on-screen with TimeTrack
- Native Virtual Memory for Continuous Imaging (unlimited maximum capture time)
- Available Real-Time TCP/IP Scoreboard Interface for Running Time and Results
- Generic Database
- Image/Results Printing with Automatic Start Indication
- Intelligent Continuous Image Zoom and Rolling Scrolling
- Live Video Mode for Accurate Camera Alignment
- Contrast Post-Processing and Gamma Control
- Start Logging Capability
- Object Finder and Automatic Dead-Space Elimination
- Available in most languages, including character-based languages.